



BUSINESS AVIATION
TRAFFIC TRACKER EUROPE

August 2018



EXECUTIVE SUMMARY

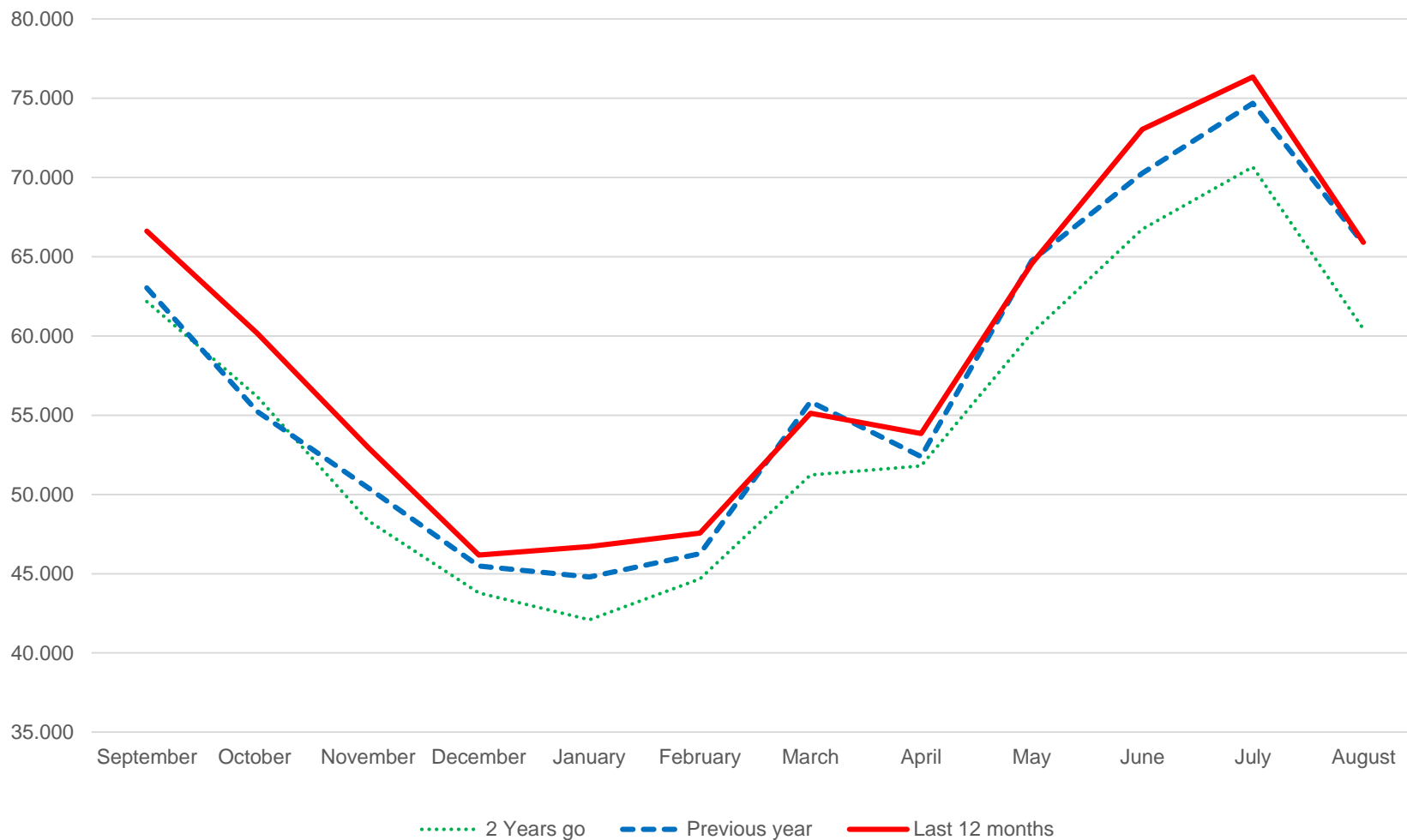
The traditional August slow-down

- With 65.902 flights, August 2018 is slightly above August 2017 (65.821 flights).
- As every year, August is around 10.000 flights below July, marking a traditional slow-down during the BizAv summer peak.
- The 8 first months of 2018 period shows +1,7% more traffic than the same period last year and almost 7,9% more than 2 years ago.
- As usual, the summer months are active months for the southern Europe airports. Thus in August, 5 airports of the top 10 are Mediterranean airports (Nice, Cannes, Olbia, Palma and Ibiza)





DEPARTURES, ARRIVALS, INTERNALS AND OVERFLIGHTS (DAIO) REPORT BUSINESS AVIATION





DEPARTURES, ARRIVALS, INTERNALS AND OVERFLIGHTS (DAIO) REPORT

TOTAL FLIGHTS

Business Aviation (Single European Sky Area)

Month	Arrival			Departure			Internal			Overflight			Previous Year	Current Year	Growth
	Previous Year	Current Year	Growth	Previous Year	Current Year	Growth	Previous Year	Current Year	Growth	Previous Year	Current Year	Growth			
Sep 2017	4.573	4.791	4,8%	4.459	4.697	5,3%	53.256	56.325	5,8%	747	803	7,5%	63.035	66.616	5,7%
Oct 2017	4.229	4.501	6,4%	4.328	4.618	6,7%	45.939	50.124	9,1%	739	915	23,8%	55.235	60.158	8,9%
Nov 2017	3.930	4.077	3,7%	3.886	3.962	2,0%	41.886	44.261	5,7%	720	658	-8,6%	50.422	52.958	5,0%
Dec 2017	3.639	3.675	1,0%	3.772	3.783	0,3%	37.374	38.022	1,7%	695	693	-0,3%	45.480	46.173	1,5%
Jan 2018	3.853	3.934	2,1%	3.627	3.737	3,0%	36.709	38.454	4,8%	606	582	-4,0%	44.795	46.707	4,3%
Feb 2018	3.453	3.441	-0,3%	3.457	3.432	-0,7%	38.762	40.085	3,4%	598	597	-0,2%	46.270	47.555	2,8%
Mar 2018	4.047	4.039	-0,2%	3.981	4.050	1,7%	47.131	46.362	-1,6%	695	714	2,7%	55.854	55.165	-1,2%
Apr 2018	4.097	4.152	1,3%	4.056	3.886	-4,2%	43.425	46.315	6,7%	810	760	-6,2%	52.388	55.113	5,2%
May 2018	4.627	4.580	-1,0%	4.515	4.477	-0,8%	54.768	54.704	-0,1%	830	833	0,4%	64.740	64.594	-0,2%
Jun 2018	5.107	5.325	4,3%	4.829	5.079	5,2%	59.565	61.705	3,6%	760	931	22,5%	70.261	73.040	4,0%
Jul 2018	5.174	5.575	7,8%	5.190	5.640	8,7%	63.580	64.219	1,0%	740	914	23,5%	74.684	76.348	2,2%
Aug 2018	4.864	4.909	0,9%	4.952	4.941	-0,2%	55.235	55.261	0,0%	770	791	2,7%	65.821	65.902	0,1%
Grand Total	51.593	52.999	2,7%	51.052	52.302	2,4%	577.630	595.837	3,2%	8.710	9.191	5,5%	688.985	710.329	3,1%






STATES – August 2018 AVERAGE DAILY FLIGHTS

STATE	MONTH CURRENT YEAR	MONTH GROWTH	YTD CURRENT YEAR	YTD GROWTH
ECAC	2.185,0	0,1%	2.048,9	1,8%
ESRA08	2.169,4	0,3%	2.028,8	1,8%
SES-RP2	2.113,1	0,2%	1.982,4	2,1%
EU28	2.058,5	0,3%	1.927,9	2,3%
FABEC	1.324,8	0,7%	1.321,0	2,4%
BLUE MED FAB	749,8	1,9%	538,9	3,2%
UK-Ireland FAB	453,3	0,4%	460,2	0,5%
FAB CE	438,8	2,9%	380,2	3,3%
South West FAB	315,5	-0,3%	259,4	6,0%
NEFAB	139,3	-2,4%	137,3	0,5%
DK-SE FAB	130,4	-3,4%	134,9	1,8%
Baltic FAB	125,7	-11,0%	126,8	3,7%
Danube FAB	89,3	1,8%	82,3	5,3%



(AIRPORTS) August 2018 AVERAGE DAILY DEPARTURES

Business Aviation

RANK	ICAO CODE	NAME	MONTH CURRENT YEAR	MONTH GROWTH	YTD CURRENT YEAR	YTD GROWTH
1	LFMN	NICE	69,9	-7,2%	50,6	0,0%
2	LFPB	PARIS LE BOURGET	49,5	2,8%	70,7	6,1%
3	LIEO	OLBIA COSTA SMERALDA	48,3	4,8%	15,4	1,8%
4	LSGG	GENEVE COINTRIN	38,9	-4,3%	44,9	1,5%
5	LEIB	IBIZA	36,4	-7,7%	18,8	3,5%
6 	EGLF	FARNBOROUGH CIV	34,0	12,0%	36,8	12,4%
7 	EGGW	LONDON/LUTON	31,5	-12,1%	37,8	-3,3%
8	LEPA	PALMA DE MALLORCA	29,4	-2,2%	19,1	4,8%
9	LSZH	ZURICH	28,5	-1,1%	31,2	1,7%
10 	LFMD	CANNES MANDELIEU	26,2	1,0%	17,8	0,8%



FLOWS – August 2018 AVERAGE DAILY FLIGHTS

Business Aviation

ORIGIN	DESTINATION	MONTH CURRENT YEAR	MONTH GROWTH	YTD CURRENT YEAR	YTD GROWTH
France	France	145,3	1,6%	163,7	2,3%
UK	UK	114,2	-1,8%	111,1	0,2%
Germany	Germany	109,3	3,1%	119,4	0,1%
Italy	Italy	87,6	2,3%	67,9	2,7%
Spain	Spain	55,7	-3,7%	45,8	3,2%
Norway	Norway	50,4	0,2%	49,3	-3,0%
Turkey	Turkey	39,4	-8,0%	33,5	-10,4%
Sweden	Sweden	35,5	-2,6%	35,5	-0,3%
France	UK	35,0	-0,8%	34,7	0,1%
UK	France	34,1	0,2%	34,5	1,3%



TRAFFIC PER STATE – August 2018

AVERAGE DAILY FLIGHTS (excl. overflights) – PART 1

STATE	MONTH CURRENT YEAR	MONTH PREVIOUS YEAR	MONTH CHANGE	MONTH GROWTH	YTD CURRENT YEAR	YTD PREVIOUS YEAR	YTD CHANGE	YTD GROWTH
ECAC	2.185,0	2.181,8	3,2	0,1%	2.048,9	2.012,4	36,5	1,8%
ESRA08	2.169,4	2.163,4	6,0	0,3%	2.028,8	1.992,5	36,3	1,8%
ESRA02	2.152,0	2.143,7	8,4	0,4%	2.009,8	1.975,4	34,4	1,7%
SES-SJU	2.125,9	2.123,3	2,6	0,1%	1.993,5	1.954,0	39,6	2,0%
SES-RP2	2.113,1	2.109,6	3,5	0,2%	1.982,4	1.942,5	39,9	2,1%
EU28	2.058,5	2.053,2	5,3	0,3%	1.927,9	1.884,7	43,2	2,3%
EU27	2.049,8	2.045,3	4,5	0,2%	1.923,1	1.880,1	43,0	2,3%
FABEC	1.324,8	1.315,3	9,6	0,7%	1.321,0	1.290,2	30,8	2,4%
France	863,1	858,8	4,3	0,5%	820,7	795,8	24,9	3,1%
BLUE MED FAB	749,8	736,1	13,7	1,9%	538,9	522,1	16,8	3,2%
Italy	608,0	595,3	12,7	2,1%	446,1	432,1	14,0	3,2%
Germany	537,8	515,3	22,5	4,4%	578,1	557,7	20,4	3,7%
UK-Ireland FAB	453,3	451,3	2,0	0,4%	460,2	457,9	2,3	0,5%
UK	445,0	443,4	1,6	0,4%	453,0	450,3	2,8	0,6%
FAB CE	438,8	426,2	12,5	2,9%	380,2	367,9	12,3	3,3%
Switzerland	341,5	339,6	1,9	0,6%	366,6	354,9	11,7	3,3%
South West FAB	315,5	316,3	-0,8	-0,3%	259,4	244,6	14,8	6,0%
Spain	302,2	305,9	-3,7	-1,2%	247,1	233,2	13,9	6,0%
Austria	270,5	263,9	6,6	2,5%	245,0	239,3	5,7	2,4%



TRAFFIC PER STATE – August 2018

AVERAGE DAILY FLIGHTS (excl. overflights) – PART 2

STATE	MONTH CURRENT YEAR	MONTH PREVIOUS YEAR	MONTH CHANGE	MONTH GROWTH	YTD CURRENT YEAR	YTD PREVIOUS YEAR	YTD CHANGE	YTD GROWTH
Greece	211,7	207,4	4,4	2,1%	121,2	117,7	3,5	3,0%
Belgium/Luxembourg	175,5	170,1	5,4	3,2%	200,3	191,0	9,3	4,9%
Croatia	163,5	155,1	8,4	5,4%	103,4	97,4	6,0	6,1%
NEFAB	139,3	142,7	-3,5	-2,4%	137,3	136,6	0,7	0,5%
Turkey	149,6	141,5	8,1	5,7%	122,2	120,5	1,7	1,4%
Baltic FAB	125,7	141,2	-15,5	-11,0%	126,8	122,4	4,5	3,7%
DK-SE FAB	130,4	134,9	-4,6	-3,4%	134,9	132,4	2,4	1,8%
Poland	118,9	133,3	-14,4	-10,8%	116,7	112,2	4,5	4,0%
Netherlands	133,3	121,5	11,8	9,7%	150,5	140,9	9,6	6,8%
Czech Republic	118,5	116,2	2,3	2,0%	118,0	113,5	4,4	3,9%
Sweden	97,0	103,7	-6,6	-6,4%	103,5	104,0	-0,5	-0,5%
Serbia&Montenegro	111,7	102,8	9,0	8,7%	81,2	77,5	3,7	4,7%
Danube FAB	89,3	87,7	1,6	1,8%	82,3	78,1	4,2	5,3%
Slovenia	87,1	87,5	-0,4	-0,4%	65,8	63,2	2,6	4,1%
Hungary	91,4	83,9	7,5	8,9%	79,1	73,9	5,2	7,0%
Slovakia	81,6	83,7	-2,1	-2,5%	67,7	65,7	2,0	3,1%
Norway	81,5	81,4	0,1	0,1%	76,8	77,5	-0,7	-0,9%
Belarus	6,1	73,6	-67,6	-91,8%	53,2	60,9	-7,6	-12,5%
Ireland	71,7	71,2	0,5	0,8%	76,3	77,0	-0,7	-0,9%



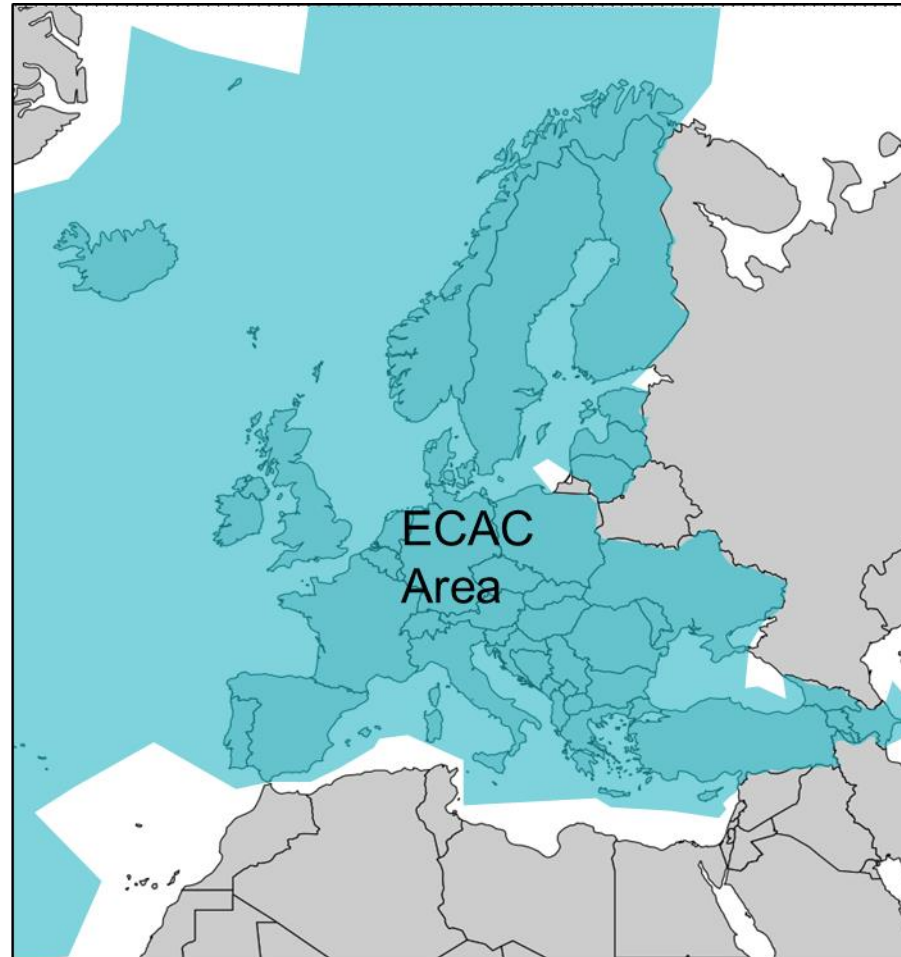
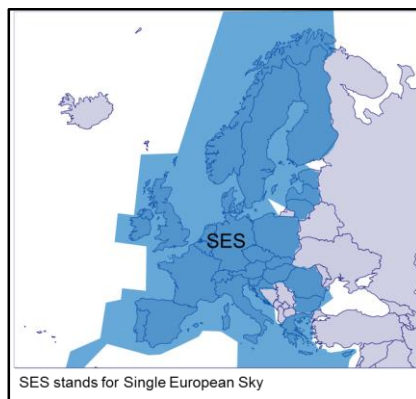
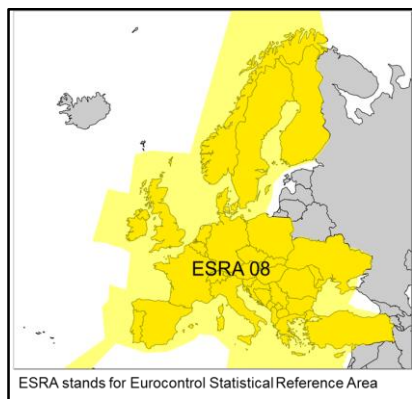
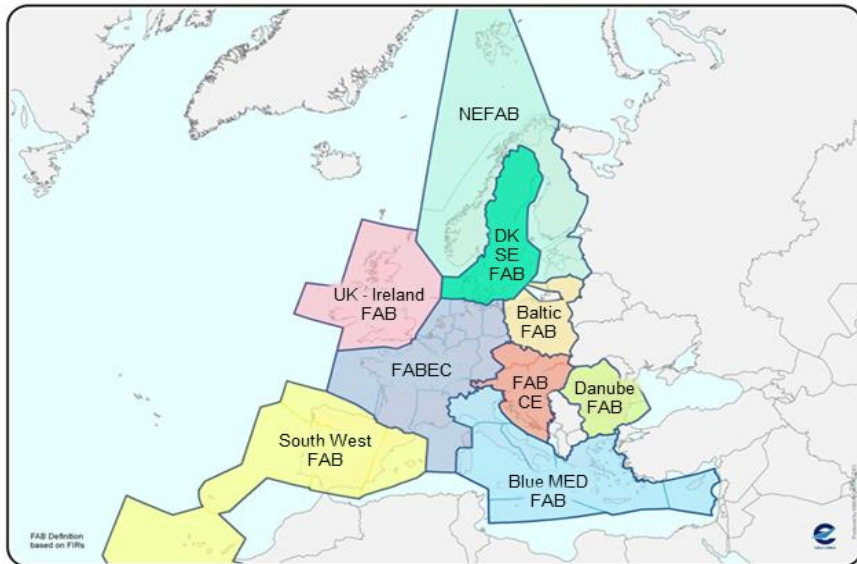
TRAFFIC PER STATE – August 2018

AVERAGE DAILY FLIGHTS (excl. overflights) - PART 3

STATE	MONTH CURRENT YEAR	MONTH PREVIOUS YEAR	MONTH CHANGE	MONTH GROWTH	YTD CURRENT YEAR	YTD PREVIOUS YEAR	YTD CHANGE	YTD GROWTH
Bulgaria	70,5	67,9	2,6	3,8%	63,4	58,6	4,8	8,1%
Bosnia-Herzegovina	70,7	66,9	3,8	5,7%	49,8	47,7	2,1	4,5%
Denmark	65,3	64,5	0,7	1,1%	69,0	65,2	3,9	6,0%
Romania	57,3	57,3	0,0	0,1%	53,5	52,8	0,7	1,3%
Cyprus	50,6	50,6	0,0	0,1%	47,9	46,5	1,4	3,0%
Albania	45,8	44,5	1,2	2,8%	26,0	27,2	-1,2	-4,3%
Lisbon FIR	47,1	41,8	5,3	12,7%	43,5	39,0	4,5	11,6%
Ukraine	40,5	40,7	-0,2	-0,5%	37,4	34,8	2,6	7,3%
Finland	38,5	37,3	1,2	3,3%	38,3	37,6	0,7	1,8%
FYROM	38,9	36,9	2,0	5,4%	24,5	22,3	2,2	9,8%
Morocco	35,5	36,0	-0,5	-1,4%	38,5	35,8	2,7	7,5%
Egypt	31,9	32,2	-0,3	-0,9%	29,4	32,2	-2,9	-8,9%
Lithuania	27,4	31,4	-4,0	-12,8%	32,1	32,0	0,1	0,2%
Latvia	26,1	30,7	-4,6	-15,0%	28,0	28,1	-0,1	-0,2%
Iceland	19,1	21,2	-2,1	-9,8%	19,7	19,0	0,7	3,6%
Israel	23,2	21,0	2,2	10,3%	23,0	19,5	3,5	18,0%
Malta	22,1	20,0	2,1	10,5%	18,8	19,1	-0,3	-1,5%
Estonia	19,1	19,9	-0,8	-4,2%	19,8	18,4	1,4	7,6%
Canary Islands	14,3	13,4	0,9	6,7%	17,2	15,1	2,1	13,7%
Santa Maria FIR	16,1	13,4	2,7	20,0%	15,9	14,3	1,6	11,5%
Tunisia	11,3	10,6	0,7	6,7%	9,3	9,4	-0,1	-0,9%
Moldova	9,5	9,5	0,0	0,0%	6,8	6,1	0,6	10,0%
Azerbaijan	9,2	9,1	0,2	1,8%	12,3	12,4	-0,1	-1,1%
Georgia	9,3	8,6	0,7	7,9%	9,4	10,0	-0,5	-5,4%
Libya	4,9	3,8	1,1	28,0%	5,2	3,5	1,7	47,9%
Armenia	2,7	2,8	-0,1	-4,5%	4,1	4,2	0,0	-1,0%



AREAS



ECAC stands for European Civil Aviation Conference



This report is provided solely to EBAA Members for information purposes only and no representation, warranties or other assurances, express or implied, are given as to the quality, accuracy, or completeness of the information contained in, or provided in connection with the report

Recipients of this report must determine for themselves whether any matters referred to are suitable for their purposes

Neither EBAA nor any of their affiliates, agents, partners, representatives, consultants or any other company, firm or organisation involved in producing this report, nor any of their successors or assign or any employees, officer or director of any of them shall have any liability with respect to the use or reliance on the report by any person, irrespective of any negligence, omission or default, on the part of the foregoing persons

Any reproduction or publication of this report, in whole or in part, is strictly forbidden without the written consent of the EBAA