



BUSINESS AVIATION
TRAFFIC TRACKER EUROPE

June 2017



EXECUTIVE SUMMARY

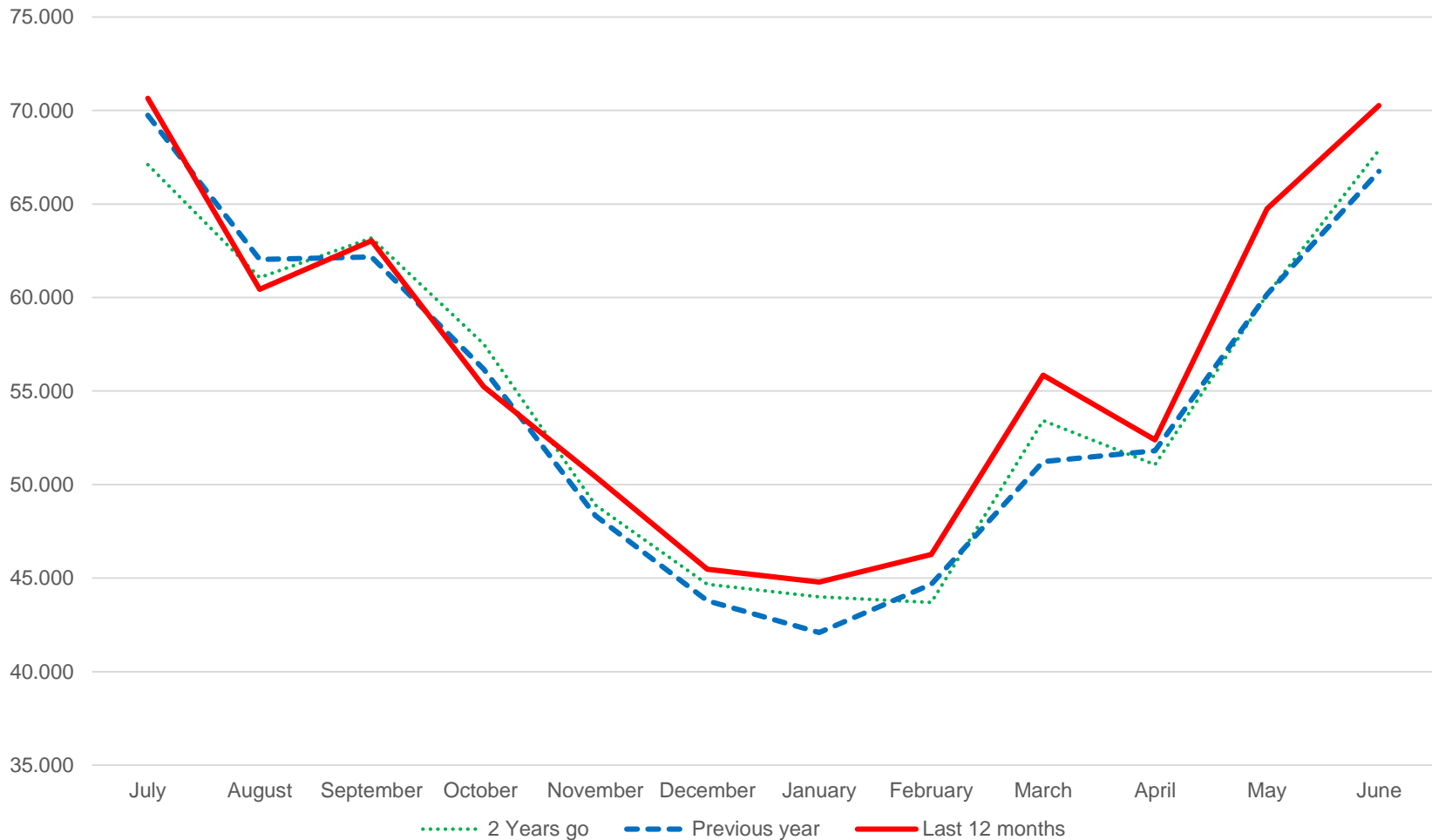
Growth Trend Continues in June

- Traffic figures for European business aviation in June were up by 5.3% compared to a year earlier
- Marking 8 months of continuous growth (not seen since 2010)
- Jan-Jun 2017 period saw 6.2% growth (not seen since 2007)
- Up by 12.4% Jan-Jun, South West FAB (Spain & Portugal) is in great shape
- Paris Le Bourget and Roma Ciampino slipped in June 2017 by -7.5% and -7.1% respectively (compared to June 2016)
- While some airports had very robust growth in June, with Ibiza up 26% and Biggin Hill up 25%
- Domestic flights were down slightly in France and Italy compared to the same period last year (-2.1% and -3.6%)
- While the UK internal market showed solid growth in the first 6 months of 2017 (+4.3%), as did Spain (+9%) and Turkey (+14.9%)
- The best performing key countries since the beginning of 2017 include:
 - Spain (+12.5%)
 - Greece (+12%)
 - Croatia (+13.4%)
 - Czech Republic (+12%)
 - UK (+9%)





DEPARTURES, ARRIVALS, INTERNALS AND OVERFLIGHTS (DAIO) REPORT BUSINESS AVIATION





DEPARTURES, ARRIVALS, INTERNALS AND OVERFLIGHTS (DAIO) REPORT

TOTAL FLIGHTS

Business Aviation (Single European Sky Area)

Month	Arrival			Departure			Internal			Overflight			Previous Year	Current Year	Growth
	Previous Year	Current Year	Growth	Previous Year	Current Year	Growth	Previous Year	Current Year	Growth	Previous Year	Current Year	Growth			
Jul 2016	5.064	4.994	-1,4%	5.040	4.947	-1,8%	58.794	59.926	1,9%	844	790	-6,4%	69.742	70.657	1,3%
Aug 2016	4.796	4.564	-4,8%	4.906	4.602	-6,2%	51.460	50.521	-1,8%	879	748	-14,9%	62.041	60.435	-2,6%
Sep 2016	4.469	4.573	2,3%	4.380	4.459	1,8%	52.581	53.256	1,3%	744	747	0,4%	62.174	63.035	1,4%
Oct 2016	4.381	4.229	-3,5%	4.452	4.328	-2,8%	46.528	45.939	-1,3%	809	739	-8,7%	56.170	55.235	-1,7%
Nov 2016	3.803	3.930	3,3%	3.752	3.886	3,6%	40.098	41.886	4,5%	689	720	4,5%	48.342	50.422	4,3%
Dec 2016	3.533	3.639	3,0%	3.647	3.772	3,4%	36.010	37.374	3,8%	605	695	14,9%	43.795	45.480	3,8%
Jan 2017	3.714	3.853	3,7%	3.485	3.627	4,1%	34.268	36.709	7,1%	629	606	-3,7%	42.096	44.795	6,4%
Feb 2017	3.359	3.453	2,8%	3.337	3.457	3,6%	37.419	38.762	3,6%	561	598	6,6%	44.676	46.270	3,6%
Mar 2017	3.846	4.047	5,2%	3.875	3.981	2,7%	42.843	47.131	10,0%	666	695	4,4%	51.230	55.854	9,0%
Apr 2017	4.009	4.097	2,2%	3.849	4.056	5,4%	43.276	43.425	0,3%	670	810	20,9%	51.804	52.388	1,1%
May 2017	4.454	4.627	3,9%	4.280	4.515	5,5%	50.633	54.768	8,2%	804	830	3,2%	60.171	64.740	7,6%
Jun 2017	4.812	5.107	6,1%	4.624	4.829	4,4%	56.565	59.566	5,3%	736	760	3,3%	66.737	70.262	5,3%
Grand Total	50.240	51.113	1,7%	49.627	50.459	1,7%	550.475	569.263	3,4%	8.636	8.738	1,2%	658.978	679.573	3,1%






STATES – June 2017 AVERAGE DAILY FLIGHTS

STATE	MONTH CURRENT YEAR	MONTH GROWTH	YTD CURRENT YEAR	YTD GROWTH
ECAC	2.407,2	5,3%	1.903,8	6,2%
ESRA08	2.388,0	5,4%	1.882,9	6,2%
SES-RP2	2.334,6	5,4%	1.836,1	6,1%
EU28	2.270,5	5,6%	1.777,6	6,4%
FABEC	1.546,5	3,2%	1.238,2	6,2%
BLUE MED FAB	665,3	12,2%	434,1	8,2%
UK-Ireland FAB	565,0	9,6%	446,6	8,8%
FAB CE	431,1	7,4%	340,5	9,2%
South West FAB	283,0	13,5%	214,4	12,4%
NEFAB	170,6	6,2%	136,5	3,5%
DK-SE FAB	167,8	9,9%	132,8	8,2%
Baltic FAB	146,1	2,6%	115,8	3,7%
Danube FAB	82,4	5,8%	73,4	8,6%



(AIRPORTS) June 2017 AVERAGE DAILY DEPARTURES

Business Aviation

RANK	ICAO CODE	NAME	MONTH CURRENT YEAR	MONTH GROWTH	YTD CURRENT YEAR	YTD GROWTH
1	LFPB	PARIS LE BOURGET	81,8	-7,5%	67,4	2,8%
2	LFMN	NICE	60,6	-1,7%	40,8	5,9%
3	LSGG	GENEVE COINTRIN	51,1	0,2%	44,2	2,7%
4	EGGW	LONDON/LUTON	45,5	0,1%	38,8	3,5%
5	EGLF	FARNBOROUGH CIV	40,9	5,2%	32,5	6,4%
6	LSZH	ZURICH	36,2	0,6%	30,9	-0,4%
7	LIML	MILANO LINATE	33,3	8,5%	25,9	0,2%
8 	LEIB	IBIZA	27,7	26,1%	10,2	18,8%
9 	LIRA	ROMA CIAMPINO	26,6	-7,1%	20,4	-6,5%
10 	EGKB	BIGGIN HILL	23,9	24,9%	18,3	15,9%



FLOWS – June 2017 AVERAGE DAILY FLIGHTS

Business Aviation

ORIGIN	DESTINATION	MONTH CURRENT YEAR	MONTH GROWTH	YTD CURRENT YEAR	YTD GROWTH
France	France	186,1	-12,4%	156,4	-2,1%
Germany	Germany	135,4	-4,2%	121,8	0,9%
UK	UK	126,9	-0,3%	108,7	4,3%
Italy	Italy	90,3	12,5%	56,3	-3,6%
Norway	Norway	56,6	1,1%	51,2	-2,0%
Spain	Spain	55,3	7,9%	37,6	8,9%
France	UK	43,9	1,7%	33,0	5,1%
UK	France	43,8	0,5%	32,5	4,2%
Turkey	Turkey	41,7	4,7%	34,6	14,9%
Sweden	Sweden	35,8	-4,4%	36,0	-0,1%



TRAFFIC PER STATE – June 2017

AVERAGE DAILY FLIGHTS – PART 1

STATE	MONTH CURRENT YEAR	MONTH PREVIOUS YEAR	MONTH CHANGE	MONTH GROWTH	YTD CURRENT YEAR	YTD PREVIOUS YEAR	YTD CHANGE	YTD GROWTH
ECAC	2.407,2	2.286,3	120,9	5,3%	1.903,8	1.792,0	111,8	6,2%
ESRA08	2.388,0	2.264,8	123,2	5,4%	1.882,9	1.772,3	110,7	6,2%
ESRA02	2.367,0	2.243,4	123,6	5,5%	1.867,1	1.754,3	112,8	6,4%
SES-SJU	2.342,1	2.224,6	117,5	5,3%	1.847,0	1.740,2	106,8	6,1%
SES-RP2	2.334,6	2.215,9	118,7	5,4%	1.836,1	1.731,0	105,1	6,1%
EU28	2.270,5	2.150,6	119,9	5,6%	1.777,6	1.670,9	106,7	6,4%
EU27	2.264,4	2.146,7	117,8	5,5%	1.774,2	1.667,9	106,3	6,4%
FABEC	1.546,5	1.499,0	47,5	3,2%	1.238,2	1.165,5	72,7	6,2%
France	968,6	943,4	25,1	2,7%	741,5	692,2	49,3	7,1%
Germany	666,1	642,2	23,9	3,7%	557,3	521,4	35,9	6,9%
BLUE MED FAB	665,3	593,0	72,3	12,2%	434,1	401,4	32,7	8,2%
UK-Ireland FAB	565,0	515,5	49,5	9,6%	446,6	410,3	36,3	8,8%
UK	555,2	505,8	49,4	9,8%	439,2	403,0	36,2	9,0%
Italy	549,2	497,4	51,8	10,4%	361,9	337,6	24,2	7,2%
FAB CE	431,1	401,4	29,7	7,4%	340,5	311,7	28,8	9,2%
Switzerland	413,9	380,7	33,2	8,7%	350,6	323,5	27,2	8,4%
Austria	279,2	271,9	7,3	2,7%	225,4	212,3	13,2	6,2%
South West FAB	283,0	249,3	33,7	13,5%	214,4	190,9	23,6	12,4%
Spain	271,7	240,0	31,7	13,2%	202,8	180,3	22,5	12,5%



TRAFFIC PER STATE – June 2017

AVERAGE DAILY FLIGHTS – PART 2

STATE	MONTH CURRENT YEAR	MONTH PREVIOUS YEAR	MONTH CHANGE	MONTH GROWTH	YTD CURRENT YEAR	YTD PREVIOUS YEAR	YTD CHANGE	YTD GROWTH
Belgium/Luxembourg	235,0	237,6	-2,6	-1,1%	191,0	184,3	6,7	3,6%
Netherlands	170,3	168,8	1,5	0,9%	142,6	135,9	6,7	5,0%
NEFAB	170,6	160,6	10,0	6,2%	136,5	131,9	4,6	3,5%
DK-SE FAB	167,8	152,7	15,1	9,9%	132,8	122,7	10,1	8,2%
Baltic FAB	146,1	142,4	3,7	2,6%	115,8	111,7	4,1	3,7%
Poland	134,0	129,4	4,6	3,6%	105,0	100,8	4,2	4,2%
Greece	148,0	126,0	22,0	17,5%	86,3	79,5	6,8	8,6%
Czech Republic	133,9	123,8	10,1	8,1%	110,4	98,7	11,8	11,9%
Turkey	128,5	122,0	6,5	5,3%	111,8	101,7	10,2	10,0%
Sweden	128,4	117,7	10,7	9,1%	104,9	96,7	8,3	8,5%
Croatia	121,2	103,8	17,5	16,8%	77,0	67,9	9,1	13,4%
Ireland	102,1	94,7	7,4	7,8%	77,2	72,8	4,4	6,0%
Norway	91,1	86,1	5,1	5,9%	76,6	75,1	1,6	2,1%
Serbia&Montenegro	91,4	85,5	5,9	6,9%	67,1	61,6	5,5	8,9%
Denmark	89,4	79,7	9,7	12,1%	65,5	59,3	6,3	10,5%
Danube FAB	82,4	77,9	4,5	5,8%	73,4	67,6	5,8	8,6%
Slovenia	79,9	71,2	8,6	12,1%	53,9	49,8	4,1	8,2%
Hungary	82,5	70,4	12,1	17,2%	68,2	58,9	9,2	15,7%
Slovakia	73,9	66,6	7,3	11,0%	59,5	52,5	7,1	13,5%



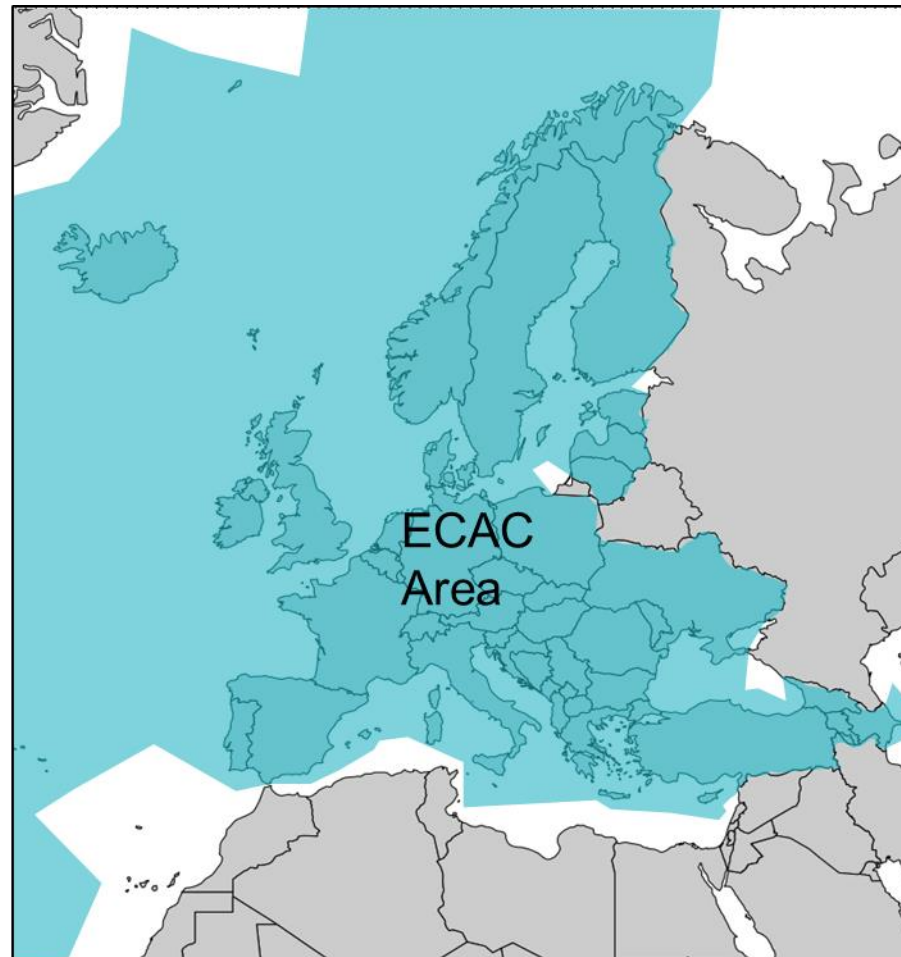
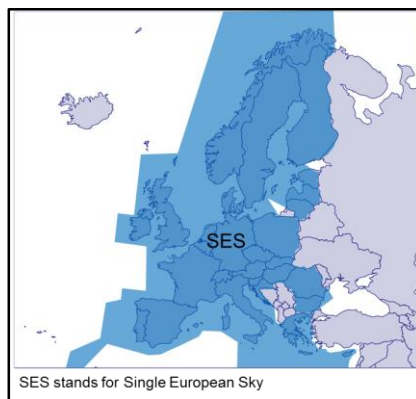
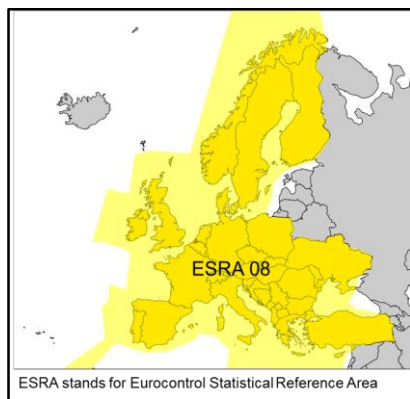
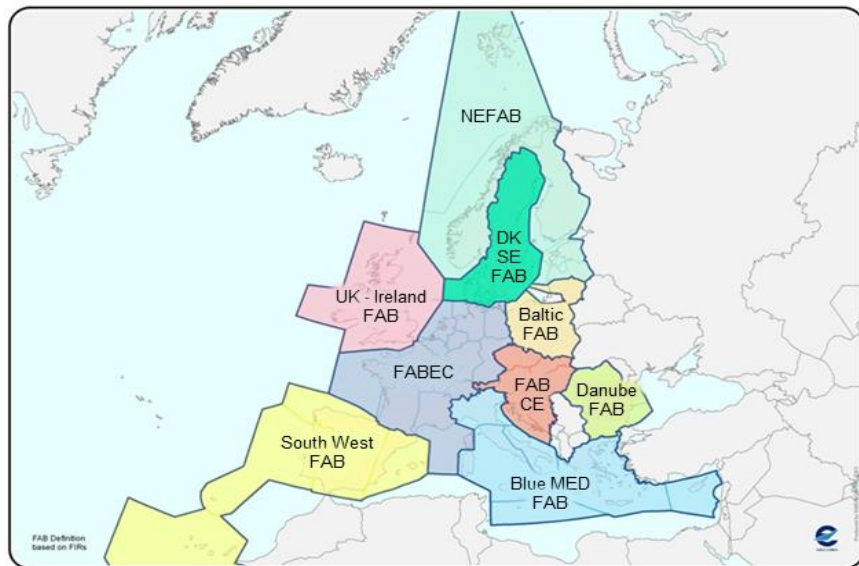
TRAFFIC PER STATE – June 2017

AVERAGE DAILY FLIGHTS - PART 3

STATE	MONTH CURRENT YEAR	MONTH PREVIOUS YEAR	MONTH CHANGE	MONTH GROWTH	YTD CURRENT YEAR	YTD PREVIOUS YEAR	YTD CHANGE	YTD GROWTH
Belarus	6,7	62,2	-55,6	-89,3%	46,8	53,9	-7,2	-13,3%
Bulgaria	61,3	60,5	0,8	1,3%	55,3	51,7	3,6	7,0%
Cyprus	53,1	47,5	5,6	11,9%	44,4	41,0	3,4	8,3%
Romania	57,3	47,1	10,3	21,8%	50,0	43,9	6,0	13,8%
Bosnia-Herzegovina	56,4	45,4	11,0	24,3%	40,5	32,7	7,8	23,7%
Finland	49,8	43,1	6,7	15,6%	39,1	36,4	2,8	7,6%
Lithuania	40,8	39,1	1,7	4,3%	31,8	31,1	0,7	2,3%
Latvia	36,6	37,5	-0,9	-2,3%	27,0	25,8	1,2	4,6%
Lisbon FIR	40,9	36,0	4,8	13,4%	37,1	33,2	3,9	11,7%
Ukraine	40,2	35,3	4,9	13,9%	32,7	29,7	3,0	10,2%
Albania	33,9	31,0	2,8	9,1%	20,8	20,4	0,4	1,9%
Egypt	29,1	28,2	1,0	3,4%	32,1	32,5	-0,3	-1,1%
Estonia	25,5	27,1	-1,6	-5,8%	17,8	17,3	0,5	3,2%
Morocco	25,3	25,0	0,3	1,2%	36,2	32,9	3,2	9,8%
FYROM	30,2	23,2	7,0	30,3%	17,6	14,1	3,5	25,1%
Iceland	23,4	22,0	1,4	6,4%	17,1	16,3	0,8	4,9%
Malta	19,5	17,1	2,4	13,8%	18,6	14,2	4,4	31,0%
Santa Maria FIR	14,8	15,3	-0,5	-3,3%	14,6	13,8	0,8	5,7%
Azerbaijan	11,3	13,3	-2,0	-15,0%	13,5	13,0	0,5	3,5%
Georgia	12,3	12,1	0,3	2,2%	10,4	10,5	-0,1	-0,9%
Canary Islands	13,9	12,0	1,8	15,2%	15,6	15,1	0,6	3,8%
Moldova	8,0	6,7	1,3	19,5%	5,2	5,0	0,2	4,6%
Tunisia	6,8	6,7	0,1	1,5%	8,9	7,5	1,4	18,2%
Libya	3,2	5,5	-2,3	-41,5%	3,5	2,5	1,0	39,6%
Armenia	3,8	4,3	-0,5	-12,4%	4,4	4,3	0,2	3,5%



AREAS



ECAC stands for European Civil Aviation Conference



This report is provided solely to EBAA Members for information purposes only and no representation, warranties or other assurances, express or implied, are given as to the quality, accuracy, or completeness of the information contained in, or provided in connection with the report. Recipients of this report must determine for themselves whether any matters referred to are suitable for their purposes.

Neither EBAA nor any of their affiliates, agents, partners, representatives, consultants or any other company, firm or organisation involved in producing this report, nor any of their successors or assign or any employees, officer or director of any of them shall have any liability with respect to the use or reliance on the report by any person, irrespective of any negligence, omission or default, on the part of the foregoing persons.

Any reproduction or publication of this report, in whole or in part, is strictly forbidden without the written consent of the EBAA.