



**BUSINESS AVIATION**  
**TRAFFIC TRACKER EUROPE**

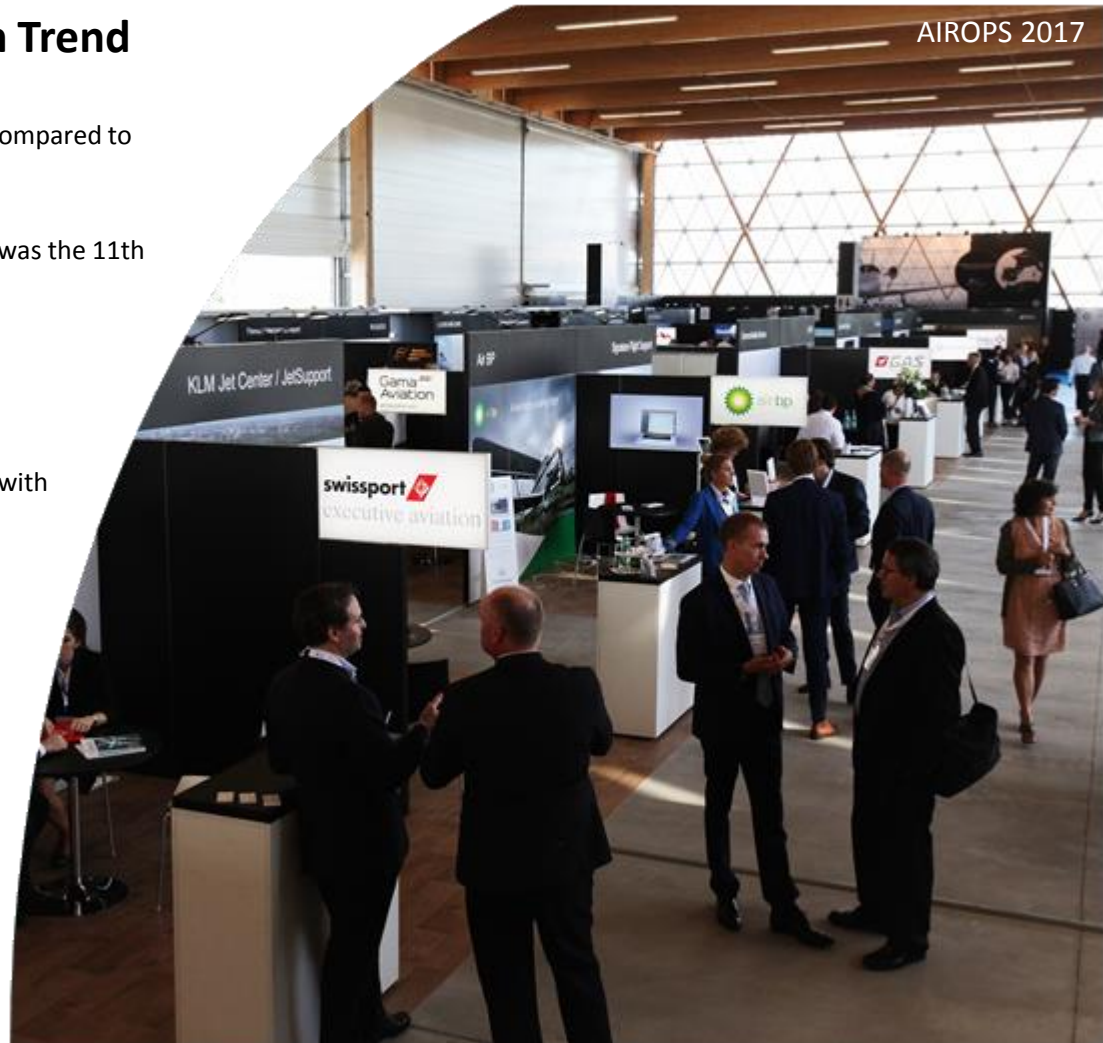
September 2017



# EXECUTIVE SUMMARY

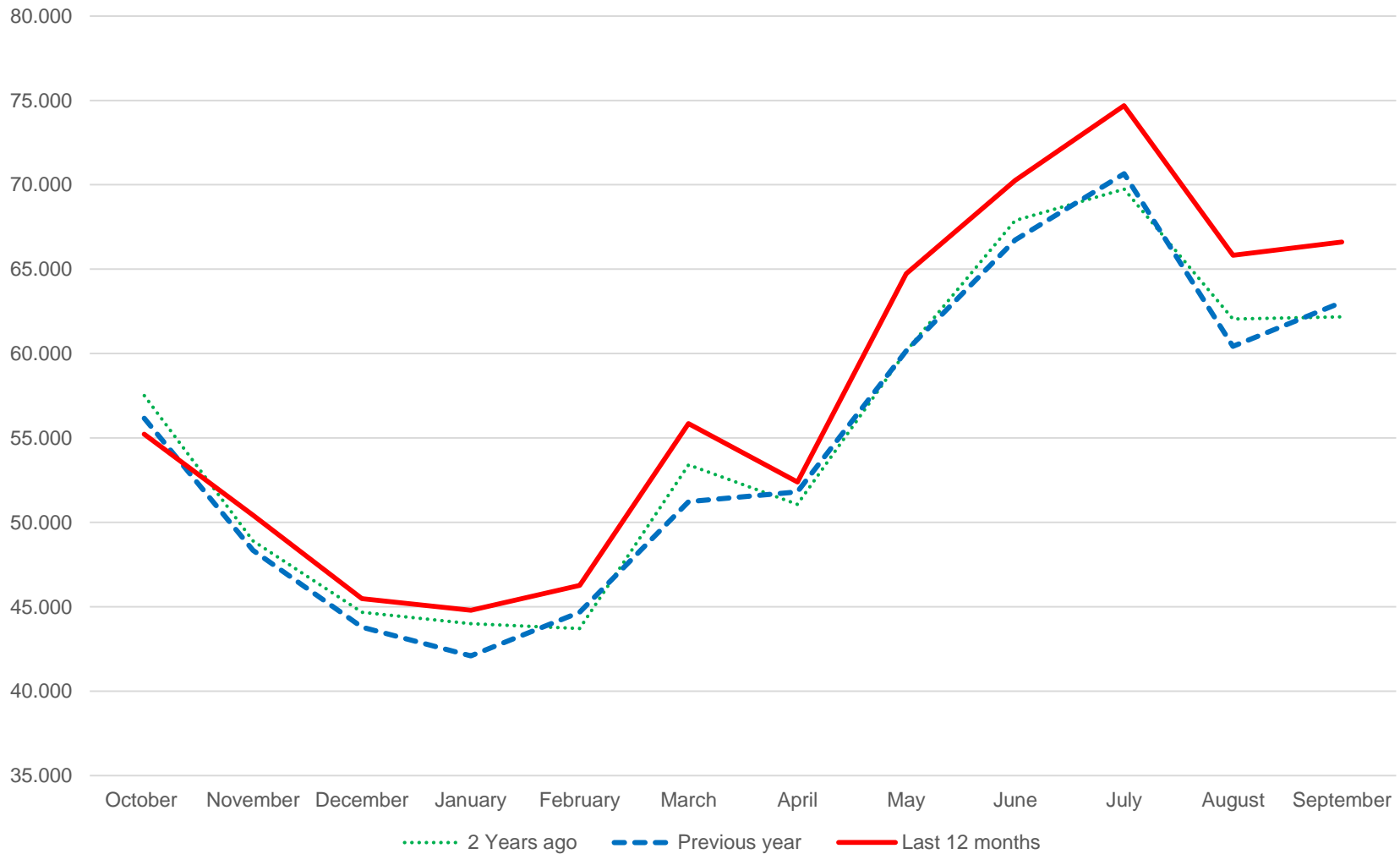
## September Sees Continued Growth Trend

- Business aviation traffic rose 5.7% in September 2017 compared to September 2016
- With 3,500 more flights than in 2016, September 2017 was the 11th month of consecutive growth
- We're pleased to announce the return of the airport rankings, consisting of European Economic centers
- Biggin Hill Airport enjoyed the largest growth in traffic, with an increase of 16% since the beginning of 2017
- All European regions (FAB) have experienced growth since the start of 2017, spanning the +3.4% at NEFAB all the way to +11.5% for Danube FAB
- An average of 120 additional BizAv flights took place per day when comparing January-September 2017 with the same period the previous year





# DEPARTURES, ARRIVALS, INTERNALS AND OVERFLIGHTS (DAIO) REPORT BUSINESS AVIATION





# DEPARTURES, ARRIVALS, INTERNALS AND OVERFLIGHTS (DAIO) REPORT

## TOTAL FLIGHTS

### Business Aviation (Single European Sky Area)

| Month              | Arrival       |               |             | Departure     |               |             | Internal       |                |             | Overflight    |              |             | Previous Year  | Current Year   | Growth       |
|--------------------|---------------|---------------|-------------|---------------|---------------|-------------|----------------|----------------|-------------|---------------|--------------|-------------|----------------|----------------|--------------|
|                    | Previous Year | Current Year  | Growth      | Previous Year | Current Year  | Growth      | Previous Year  | Current Year   | Growth      | Previous Year | Current Year | Growth      |                |                |              |
| Oct 2016           | 4.381         | 4.229         | -3,5%       | 4.452         | 4.328         | -2,8%       | 46.528         | 45.939         | -1,3%       | 809           | 739          | -8,7%       | <b>56.170</b>  | <b>55.235</b>  | <b>-1,7%</b> |
| Nov 2016           | 3.803         | 3.930         | 3,3%        | 3.752         | 3.886         | 3,6%        | 40.098         | 41.886         | 4,5%        | 689           | 720          | 4,5%        | <b>48.342</b>  | <b>50.422</b>  | <b>4,3%</b>  |
| Dec 2016           | 3.533         | 3.639         | 3,0%        | 3.647         | 3.772         | 3,4%        | 36.010         | 37.374         | 3,8%        | 605           | 695          | 14,9%       | <b>43.795</b>  | <b>45.480</b>  | <b>3,8%</b>  |
| Jan 2017           | 3.714         | 3.853         | 3,7%        | 3.485         | 3.627         | 4,1%        | 34.268         | 36.709         | 7,1%        | 629           | 606          | -3,7%       | <b>42.096</b>  | <b>44.795</b>  | <b>6,4%</b>  |
| Feb 2017           | 3.359         | 3.453         | 2,8%        | 3.337         | 3.457         | 3,6%        | 37.419         | 38.762         | 3,6%        | 561           | 598          | 6,6%        | <b>44.676</b>  | <b>46.270</b>  | <b>3,6%</b>  |
| Mar 2017           | 3.846         | 4.047         | 5,2%        | 3.875         | 3.981         | 2,7%        | 42.843         | 47.131         | 10,0%       | 666           | 695          | 4,4%        | <b>51.230</b>  | <b>55.854</b>  | <b>9,0%</b>  |
| Apr 2017           | 4.009         | 4.097         | 2,2%        | 3.849         | 4.056         | 5,4%        | 43.276         | 43.425         | 0,3%        | 670           | 810          | 20,9%       | <b>51.804</b>  | <b>52.388</b>  | <b>1,1%</b>  |
| May 2017           | 4.454         | 4.627         | 3,9%        | 4.280         | 4.515         | 5,5%        | 50.633         | 54.768         | 8,2%        | 804           | 830          | 3,2%        | <b>60.171</b>  | <b>64.740</b>  | <b>7,6%</b>  |
| Jun 2017           | 4.812         | 5.107         | 6,1%        | 4.624         | 4.829         | 4,4%        | 56.565         | 59.565         | 5,3%        | 736           | 760          | 3,3%        | <b>66.737</b>  | <b>70.261</b>  | <b>5,3%</b>  |
| Jul 2017           | 4.994         | 5.174         | 3,6%        | 4.947         | 5.190         | 4,9%        | 59.926         | 63.580         | 6,1%        | 790           | 740          | -6,3%       | <b>70.657</b>  | <b>74.684</b>  | <b>5,7%</b>  |
| Aug 2017           | 4.564         | 4.864         | 6,6%        | 4.602         | 4.952         | 7,6%        | 50.521         | 55.235         | 9,3%        | 748           | 770          | 2,9%        | <b>60.435</b>  | <b>65.821</b>  | <b>8,9%</b>  |
| Sep 2017           | 4.573         | 4.790         | 4,7%        | 4.459         | 4.697         | 5,3%        | 53.256         | 56.326         | 5,8%        | 747           | 799          | 7,0%        | <b>63.035</b>  | <b>66.612</b>  | <b>5,7%</b>  |
| <b>Grand Total</b> | <b>50.042</b> | <b>51.810</b> | <b>3,5%</b> | <b>49.309</b> | <b>51.290</b> | <b>4,0%</b> | <b>551.343</b> | <b>580.700</b> | <b>5,3%</b> | <b>8.454</b>  | <b>8.762</b> | <b>3,6%</b> | <b>659.148</b> | <b>692.562</b> | <b>5,1%</b>  |





## STATES – September 2017 AVERAGE DAILY FLIGHTS

| STATE          | MONTH CURRENT YEAR | MONTH GROWTH | YTD CURRENT YEAR | YTD GROWTH |
|----------------|--------------------|--------------|------------------|------------|
| ECAC           | 2.282,4            | 5,9%         | 2.042,1          | 6,5%       |
| ESRA08         | 2.259,8            | 5,8%         | 2.021,9          | 6,6%       |
| SES-RP2        | 2.209,4            | 5,8%         | 1.971,8          | 6,3%       |
| EU28           | 2.149,5            | 6,0%         | 1.913,8          | 6,6%       |
| FABEC          | 1.479,2            | 6,4%         | 1.311,0          | 6,5%       |
| BLUE MED FAB   | 617,5              | 8,3%         | 532,6            | 8,6%       |
| UK-Ireland FAB | 535,1              | 3,7%         | 466,3            | 8,2%       |
| FAB CE         | 424,7              | 10,2%        | 374,1            | 10,0%      |
| South West FAB | 266,5              | 8,2%         | 247,0            | 11,1%      |
| DK-SE FAB      | 151,1              | 9,2%         | 134,5            | 8,3%       |
| NEFAB          | 144,8              | 5,2%         | 137,5            | 3,4%       |
| Baltic FAB     | 141,3              | 11,4%        | 124,4            | 6,5%       |
| Danube FAB     | 91,2               | 10,8%        | 79,5             | 11,5%      |



## (AIRPORTS) September 2017 AVERAGE DAILY DEPARTURES

### Business Aviation

| RANK   | ICAO CODE | NAME             | MONTH CURRENT YEAR | MONTH GROWTH | YTD CURRENT YEAR | YTD GROWTH |
|--|-----------|------------------|--------------------|--------------|------------------|------------|
| 1  | LFPB      | PARIS LE BOURGET | 75,2               | -4,1%        | 67,6             | 0,7%       |
| 2  | LFMN      | NICE             | 58,1               | 11,2%        | 51,4             | 7,1%       |
| 3  | LSGG      | GENEVE COINTRIN  | 52,3               | 7,8%         | 45,1             | 3,7%       |
| 4  | EGGW      | LONDON/LUTON     | 42,2               | -3,2%        | 39,4             | 2,3%       |
| 5  | EGLF      | FARNBOROUGH CIV  | 38,3               | 5,0%         | 33,4             | 6,1%       |
| 6  | LSZH      | ZURICH           | 35,8               | 4,9%         | 31,2             | -0,4%      |
| 7  | LIML      | MILANO LINATE    | 30,0               | -4,8%        | 26,3             | 0,5%       |
| 8  | LIRA      | ROMA CIAMPINO    | 26,6               | 8,6%         | 22,0             | -2,9%      |
| 9   | LOWW      | WIEN SCHWECHAT   | 24,7               | 12,6%        | 20,1             | 4,0%       |
| 10  | EGKB      | BIGGIN HILL      | 24,5               | 15,6%        | 19,6             | 16,4%      |



## FLOWS – September 2017 AVERAGE DAILY FLIGHTS

### Business Aviation

| ORIGIN  | DESTINATION | MONTH CURRENT YEAR | MONTH GROWTH | YTD CURRENT YEAR | YTD GROWTH |
|---------|-------------|--------------------|--------------|------------------|------------|
| France  | France      | 176,9              | 3,9%         | 161,9            | -2,1%      |
| Germany | Germany     | 141,7              | -0,7%        | 121,8            | 0,8%       |
| UK      | UK          | 130,8              | -3,2%        | 113,1            | 3,0%       |
| Italy   | Italy       | 73,3               | 1,5%         | 66,9             | -0,5%      |
| Norway  | Norway      | 52,9               | -2,2%        | 51,1             | -2,2%      |
| Spain   | Spain       | 45,5               | -5,3%        | 44,5             | 5,3%       |
| France  | UK          | 39,0               | 0,1%         | 35,1             | 3,8%       |
| Sweden  | Sweden      | 38,2               | 6,4%         | 35,9             | 0,9%       |
| UK      | France      | 38,1               | -2,2%        | 34,5             | 3,1%       |
| Turkey  | Turkey      | 36,4               | 5,9%         | 37,2             | 14,6%      |



## TRAFFIC PER STATE – September 2017

### AVERAGE DAILY FLIGHTS – PART 1

| STATE          | MONTH CURRENT YEAR | MONTH PREVIOUS YEAR | MONTH CHANGE | MONTH GROWTH | YTD CURRENT YEAR | YTD PREVIOUS YEAR | YTD CHANGE | YTD GROWTH |
|----------------|--------------------|---------------------|--------------|--------------|------------------|-------------------|------------|------------|
| ECAC           | 2.282,4            | 2.156,1             | 126,3        | 5,9%         | 2.042,1          | 1.916,9           | 125,2      | 6,5%       |
| ESRA08         | 2.259,8            | 2.136,5             | 123,3        | 5,8%         | 2.021,9          | 1.897,5           | 124,4      | 6,6%       |
| ESRA02         | 2.237,2            | 2.115,1             | 122,0        | 5,8%         | 2.004,2          | 1.878,7           | 125,5      | 6,7%       |
| SES-SJU        | 2.220,4            | 2.101,2             | 119,2        | 5,7%         | 1.983,2          | 1.864,4           | 118,9      | 6,4%       |
| SES-RP2        | 2.209,4            | 2.089,1             | 120,3        | 5,8%         | 1.971,8          | 1.854,2           | 117,6      | 6,3%       |
| EU28           | 2.149,5            | 2.027,4             | 122,1        | 6,0%         | 1.913,8          | 1.794,6           | 119,2      | 6,6%       |
| EU27           | 2.144,1            | 2.022,4             | 121,8        | 6,0%         | 1.909,1          | 1.790,4           | 118,7      | 6,6%       |
| FABEC          | 1.479,2            | 1.390,0             | 89,2         | 6,4%         | 1.311,0          | 1.231,2           | 79,7       | 6,5%       |
| France         | 897,4              | 846,1               | 51,3         | 6,1%         | 807,0            | 755,5             | 51,5       | 6,8%       |
| Germany        | 652,7              | 612,6               | 40,1         | 6,5%         | 568,2            | 529,3             | 38,8       | 7,3%       |
| BLUE MED FAB   | 617,5              | 570,0               | 47,5         | 8,3%         | 532,6            | 490,3             | 42,2       | 8,6%       |
| UK-Ireland FAB | 535,1              | 516,0               | 19,1         | 3,7%         | 466,3            | 431,1             | 35,3       | 8,2%       |
| UK             | 526,9              | 505,7               | 21,3         | 4,2%         | 458,7            | 423,2             | 35,5       | 8,4%       |
| Italy          | 512,0              | 473,9               | 38,1         | 8,0%         | 440,9            | 409,5             | 31,3       | 7,7%       |
| FAB CE         | 424,7              | 385,3               | 39,5         | 10,2%        | 374,1            | 340,0             | 34,1       | 10,0%      |
| Switzerland    | 399,5              | 359,0               | 40,5         | 11,3%        | 359,8            | 330,1             | 29,7       | 9,0%       |
| Austria        | 279,0              | 255,6               | 23,4         | 9,2%         | 243,6            | 228,1             | 15,6       | 6,8%       |
| South West FAB | 266,5              | 246,4               | 20,2         | 8,2%         | 247,0            | 222,3             | 24,7       | 11,1%      |
| Spain          | 254,8              | 235,9               | 18,9         | 8,0%         | 235,5            | 212,1             | 23,5       | 11,1%      |





## TRAFFIC PER STATE – September 2017

### AVERAGE DAILY FLIGHTS – PART 2

| STATE              | MONTH CURRENT YEAR | MONTH PREVIOUS YEAR | MONTH CHANGE | MONTH GROWTH | YTD CURRENT YEAR | YTD PREVIOUS YEAR | YTD CHANGE | YTD GROWTH |
|--------------------|--------------------|---------------------|--------------|--------------|------------------|-------------------|------------|------------|
| Belgium/Luxembourg | 225,6              | 212,3               | 13,3         | 6,3%         | 194,8            | 184,8             | 10,0       | 5,4%       |
| Netherlands        | 161,7              | 152,8               | 8,9          | 5,8%         | 143,2            | 136,5             | 6,6        | 4,9%       |
| DK-SE FAB          | 151,1              | 138,3               | 12,7         | 9,2%         | 134,5            | 124,1             | 10,4       | 8,3%       |
| NEFAB              | 144,8              | 137,6               | 7,2          | 5,2%         | 137,5            | 133,0             | 4,5        | 3,4%       |
| Greece             | 138,7              | 130,9               | 7,8          | 5,9%         | 120,1            | 109,7             | 10,3       | 9,4%       |
| Baltic FAB         | 141,3              | 126,8               | 14,5         | 11,4%        | 124,4            | 116,9             | 7,5        | 6,5%       |
| Turkey             | 132,1              | 118,6               | 13,5         | 11,4%        | 121,8            | 109,0             | 12,8       | 11,8%      |
| Czech Republic     | 129,5              | 116,9               | 12,6         | 10,8%        | 115,3            | 103,0             | 12,3       | 12,0%      |
| Poland             | 127,9              | 114,8               | 13,0         | 11,3%        | 114,0            | 106,3             | 7,6        | 7,2%       |
| Sweden             | 114,3              | 105,6               | 8,7          | 8,2%         | 105,1            | 97,4              | 7,7        | 7,9%       |
| Croatia            | 119,5              | 104,5               | 15,0         | 14,4%        | 99,9             | 88,6              | 11,3       | 12,8%      |
| Ireland            | 90,9               | 91,8                | -0,9         | -0,9%        | 78,5             | 75,4              | 3,1        | 4,1%       |
| Serbia&Montenegro  | 93,8               | 85,9                | 7,9          | 9,2%         | 79,3             | 72,9              | 6,4        | 8,8%       |
| Danube FAB         | 91,2               | 82,3                | 8,9          | 10,8%        | 79,5             | 71,3              | 8,2        | 11,5%      |
| Norway             | 80,6               | 79,5                | 1,1          | 1,4%         | 77,8             | 76,4              | 1,4        | 1,8%       |
| Hungary            | 84,4               | 74,7                | 9,7          | 13,0%        | 75,1             | 63,1              | 11,9       | 18,9%      |
| Slovenia           | 79,5               | 72,5                | 7,0          | 9,6%         | 65,0             | 59,9              | 5,1        | 8,5%       |
| Denmark            | 77,0               | 70,6                | 6,4          | 9,1%         | 66,5             | 59,8              | 6,7        | 11,1%      |
| Slovakia           | 74,8               | 63,6                | 11,2         | 17,6%        | 66,7             | 57,5              | 9,2        | 16,1%      |



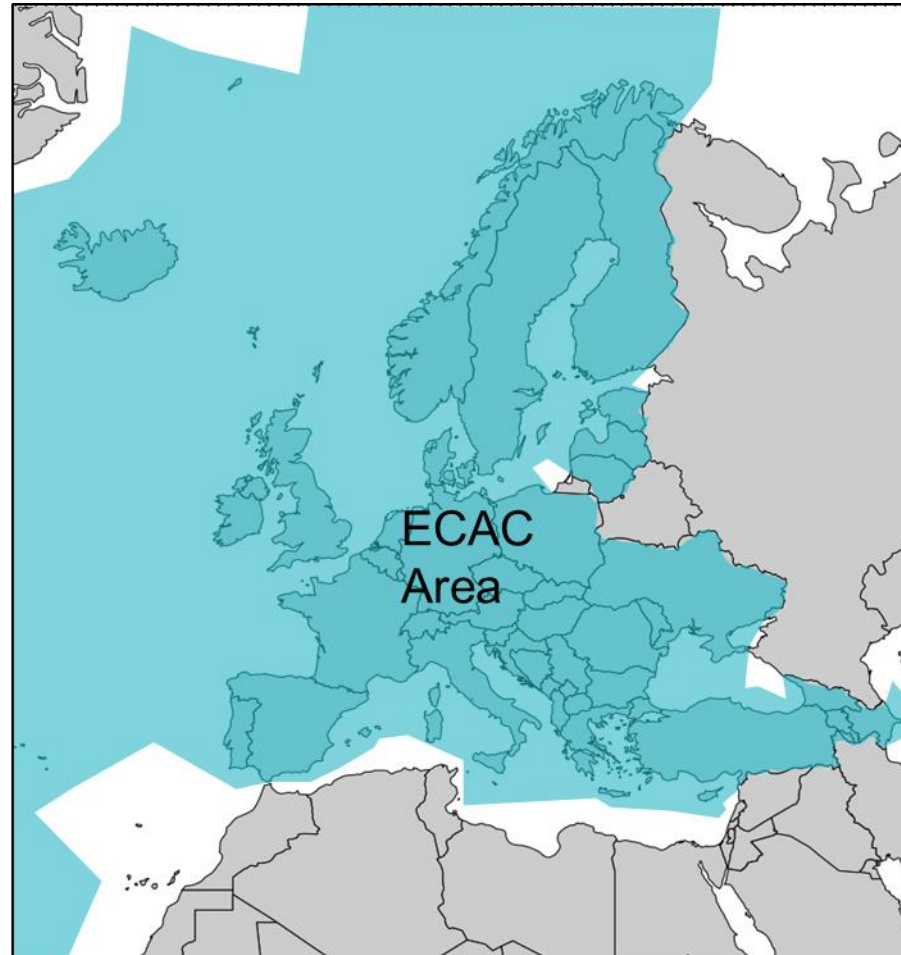
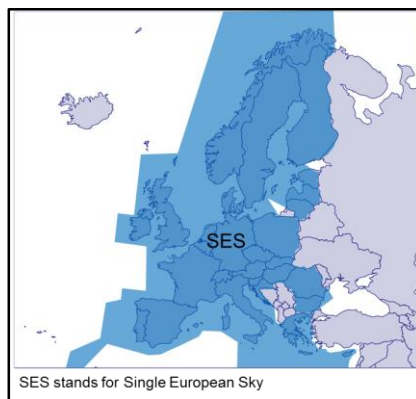
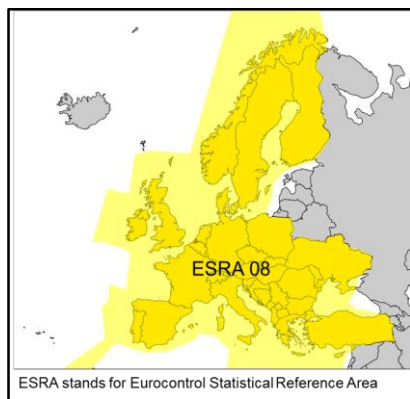
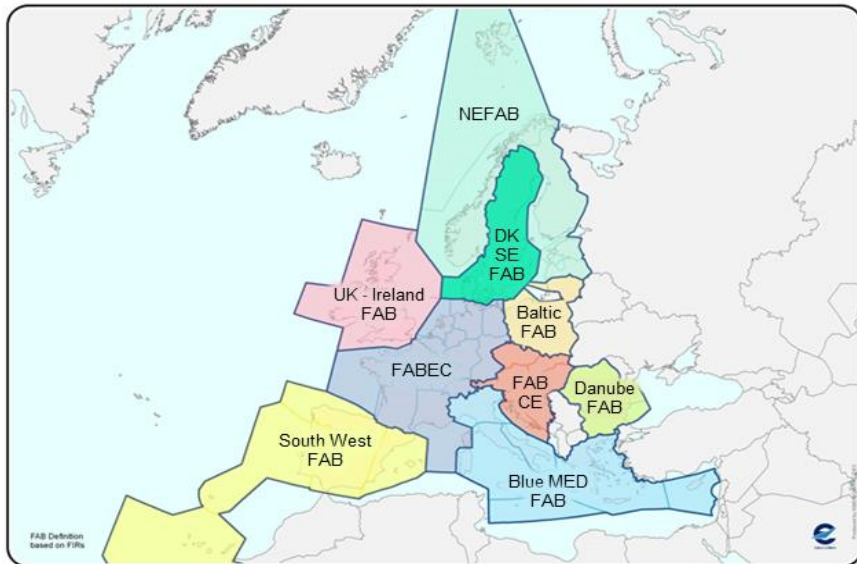
## TRAFFIC PER STATE – September 2017

### AVERAGE DAILY FLIGHTS - PART 3

| STATE              | MONTH CURRENT YEAR | MONTH PREVIOUS YEAR | MONTH CHANGE | MONTH GROWTH | YTD CURRENT YEAR | YTD PREVIOUS YEAR | YTD CHANGE | YTD GROWTH |
|--------------------|--------------------|---------------------|--------------|--------------|------------------|-------------------|------------|------------|
| Bulgaria           | 69,4               | 62,1                | 7,3          | 11,8%        | 59,8             | 54,6              | 5,3        | 9,6%       |
| Belarus            | 7,3                | 57,9                | -50,6        | -87,4%       | 55,0             | 57,3              | -2,3       | -4,0%      |
| Romania            | 59,4               | 51,4                | 8,0          | 15,6%        | 53,5             | 45,2              | 8,4        | 18,5%      |
| Cyprus             | 49,8               | 48,3                | 1,5          | 3,0%         | 46,9             | 43,9              | 3,0        | 6,7%       |
| Bosnia-Herzegovina | 59,5               | 46,6                | 12,9         | 27,8%        | 49,0             | 39,6              | 9,3        | 23,5%      |
| Finland            | 38,7               | 38,6                | 0,1          | 0,2%         | 37,7             | 36,2              | 1,5        | 4,3%       |
| Lisbon FIR         | 43,7               | 36,2                | 7,5          | 20,7%        | 39,5             | 35,2              | 4,3        | 12,3%      |
| Ukraine            | 39,4               | 36,2                | 3,2          | 8,8%         | 35,3             | 32,3              | 3,1        | 9,5%       |
| Egypt              | 36,2               | 35,6                | 0,6          | 1,6%         | 32,7             | 33,6              | -0,9       | -2,7%      |
| Lithuania          | 37,9               | 34,5                | 3,4          | 10,0%        | 32,6             | 31,6              | 1,1        | 3,4%       |
| Morocco            | 33,0               | 33,6                | -0,6         | -1,7%        | 35,5             | 33,9              | 1,6        | 4,8%       |
| Albania            | 35,9               | 31,4                | 4,4          | 14,1%        | 28,1             | 26,5              | 1,7        | 6,3%       |
| Latvia             | 32,5               | 27,6                | 4,8          | 17,5%        | 28,6             | 26,4              | 2,1        | 8,1%       |
| Iceland            | 19,3               | 23,4                | -4,1         | -17,4%       | 19,0             | 18,1              | 0,9        | 5,2%       |
| FYROM              | 27,1               | 21,5                | 5,6          | 26,1%        | 22,8             | 17,8              | 5,1        | 28,5%      |
| Malta              | 20,2               | 19,4                | 0,8          | 4,3%         | 19,2             | 16,6              | 2,6        | 15,6%      |
| Estonia            | 22,0               | 16,1                | 5,9          | 36,7%        | 18,8             | 17,8              | 1,0        | 5,6%       |
| Azerbaijan         | 12,5               | 12,9                | -0,5         | -3,6%        | 12,4             | 12,4              | 0,0        | 0,0%       |
| Santa Maria FIR    | 13,6               | 12,0                | 1,6          | 13,6%        | 14,2             | 13,5              | 0,7        | 5,3%       |
| Canary Islands     | 13,2               | 11,6                | 1,7          | 14,4%        | 14,9             | 13,8              | 1,1        | 7,7%       |
| Georgia            | 13,6               | 11,4                | 2,2          | 19,3%        | 10,4             | 10,6              | -0,2       | -2,2%      |
| Tunisia            | 10,8               | 8,2                 | 2,6          | 32,2%        | 9,6              | 8,3               | 1,3        | 15,2%      |
| Moldova            | 6,9                | 6,5                 | 0,4          | 6,7%         | 6,2              | 5,7               | 0,5        | 8,7%       |
| Libya              | 5,3                | 5,7                 | -0,4         | -7,6%        | 3,7              | 3,6               | 0,1        | 2,2%       |
| Armenia            | 5,9                | 3,9                 | 2,0          | 52,1%        | 4,4              | 4,0               | 0,4        | 8,9%       |



# AREAS



ECAC stands for European Civil Aviation Conference



This report is provided solely to EBAA Members for information purposes only and no representation, warranties or other assurances, express or implied, are given as to the quality, accuracy, or completeness of the information contained in, or provided in connection with the report

Recipients of this report must determine for themselves whether any matters referred to are suitable for their purposes

Neither EBAA nor any of their affiliates, agents, partners, representatives, consultants or any other company, firm or organisation involved in producing this report, nor any of their successors or assign or any employees, officer or director of any of them shall have any liability with respect to the use or reliance on the report by any person, irrespective of any negligence, omission or default, on the part of the foregoing persons

Any reproduction or publication of this report, in whole or in part, is strictly forbidden without the written consent of the EBAA