



BUSINESS AVIATION
TRAFFIC TRACKER EUROPE

January 2018



EXECUTIVE SUMMARY

January starts a 2018 with the continuation of traffic growth

AMAC Insurance Subcommittee Meeting
Milano, 1st of February

- January 2018 marks the 15th month of consecutive growth
- With 2000 additional movements, BizAv traffic rose 4,3% in January 2018 versus January 2017
- January 2018 is the best start of the year since 2012.
- With respectively +24,9%, +12,1% and +11,9% traffic growth, Biggin Hill, Farnborough and Geneva Cointrin are the 3 Airports with the best start of 2018.
- The Italian internal market (4th biggest market in Europe) experienced a solid traffic growth of +28,8% in January 2018 compared with January 2017





DEPARTURES, ARRIVALS, INTERNALS AND OVERFLIGHTS (DAIO) REPORT

TOTAL FLIGHTS

Business Aviation (Single European Sky Area)

Month	Arrival			Departure			Internal			Overflight			Previous Year	Current Year	Growth
	Previous Year	Current Year	Growth	Previous Year	Current Year	Growth	Previous Year	Current Year	Growth	Previous Year	Current Year	Growth			
Feb 2017	3.359	3.453	2,8%	3.337	3.457	3,6%	37.419	38.762	3,6%	561	598	6,6%	44.676	46.270	3,6%
Mar 2017	3.846	4.047	5,2%	3.875	3.981	2,7%	42.843	47.131	10,0%	666	695	4,4%	51.230	55.854	9,0%
Apr 2017	4.009	4.097	2,2%	3.849	4.056	5,4%	43.276	43.425	0,3%	670	810	20,9%	51.804	52.388	1,1%
May 2017	4.454	4.627	3,9%	4.280	4.515	5,5%	50.633	54.768	8,2%	804	830	3,2%	60.171	64.740	7,6%
Jun 2017	4.812	5.107	6,1%	4.624	4.829	4,4%	56.565	59.565	5,3%	736	760	3,3%	66.737	70.261	5,3%
Jul 2017	4.994	5.174	3,6%	4.947	5.190	4,9%	59.926	63.580	6,1%	790	740	-6,3%	70.657	74.684	5,7%
Aug 2017	4.564	4.864	6,6%	4.602	4.952	7,6%	50.521	55.235	9,3%	748	770	2,9%	60.435	65.821	8,9%
Sep 2017	4.573	4.791	4,8%	4.459	4.697	5,3%	53.256	56.325	5,8%	747	803	7,5%	63.035	66.616	5,7%
Oct 2017	4.229	4.501	6,4%	4.328	4.618	6,7%	45.939	50.124	9,1%	739	915	23,8%	55.235	60.158	8,9%
Nov 2017	3.930	4.077	3,7%	3.886	3.962	2,0%	41.886	44.261	5,7%	720	658	-8,6%	50.422	52.958	5,0%
Dec 2017	3.639	3.675	1,0%	3.772	3.783	0,3%	37.374	38.022	1,7%	695	693	-0,3%	45.480	46.173	1,5%
Jan 2018	3.853	3.934	2,1%	3.627	3.737	3,0%	36.709	38.454	4,8%	606	582	-4,0%	44.795	46.707	4,3%
Grand Total	50.262	52.347	4,1%	49.586	51.777	4,4%	556.347	589.652	6,0%	8.482	8.854	4,4%	664.677	702.630	5,7%







STATES – January 2018 AVERAGE DAILY FLIGHTS

STATE	MONTH CURRENT YEAR	MONTH GROWTH	YTD CURRENT YEAR	YTD GROWTH
ECAC	1.555,1	4,2%	1.555,1	4,2%
ESRA08	1.535,4	4,4%	1.535,4	4,4%
SES-RP2	1.497,4	4,4%	1.497,4	4,4%
EU28	1.443,8	4,3%	1.443,8	4,3%
FABEC	1.023,8	4,1%	1.023,8	4,1%
UK-Ireland FAB	368,7	2,8%	368,7	2,8%
BLUE MED FAB	294,1	8,2%	294,1	8,2%
FAB CE	284,0	1,1%	284,0	1,1%
South West FAB	160,0	7,8%	160,0	7,8%
NEFAB	119,9	5,4%	119,9	5,4%
DK-SE FAB	108,7	3,4%	108,7	3,4%
Baltic FAB	102,9	3,6%	102,9	3,6%
Danube FAB	64,4	2,3%	64,4	2,3%



(AIRPORTS) January 2018 AVERAGE DAILY DEPARTURES

Business Aviation

RANK	ICAO CODE	NAME	MONTH CURRENT YEAR	MONTH GROWTH	YTD CURRENT YEAR	YTD GROWTH
1	LFPB	PARIS LE BOURGET	60,2	5,0%	60,2	5,0%
2	LSGG	GENEVE COINTRIN	42,9	11,9%	42,9	11,9%
3 	LSZH	ZURICH	34,6	7,0%	34,6	7,0%
4 	EGGW	LONDON/LUTON	31,8	-3,6%	31,8	-3,6%
5	EGLF	FARNBOROUGH CIV	28,7	12,1%	28,7	12,1%
6	LFMN	NICE	27,2	6,3%	27,2	6,3%
7	LIML	MILANO LINATE	18,7	-0,3%	18,7	-0,3%
8	LOWW	WIEN SCHWECHAT	17,2	1,1%	17,2	1,1%
9 	EGKB	BIGGIN HILL	17,0	24,9%	17,0	24,9%
10 	EDDM	MUENCHEN 2	16,9	2,7%	16,9	2,7%



FLOWS – January 2018 AVERAGE DAILY FLIGHTS

Business Aviation

ORIGIN	DESTINATION	MONTH CURRENT YEAR	MONTH GROWTH	YTD CURRENT YEAR	YTD GROWTH
France	France	124,0	-1,7%	124,0	-1,7%
Germany	Germany	102,7	7,9%	102,7	7,9%
UK	UK	93,2	3,7%	93,2	3,7%
Norway	Norway	47,6	8,4%	47,6	8,4%
Italy	Italy	40,8	28,8%	40,8	28,8%
Sweden	Sweden	34,2	1,8%	34,2	1,8%
Turkey	Turkey	26,9	3,0%	26,9	3,0%
Spain	Spain	25,7	-1,0%	25,7	-1,0%
Switzerland	France	24,9	5,2%	24,9	5,2%
France	Switzerland	24,5	3,6%	24,5	3,6%



TRAFFIC PER STATE – January 2018

AVERAGE DAILY FLIGHTS – PART 1

STATE	MONTH CURRENT YEAR	MONTH PREVIOUS YEAR	MONTH CHANGE	MONTH GROWTH	YTD CURRENT YEAR	YTD PREVIOUS YEAR	YTD CHANGE	YTD GROWTH
ECAC	1.555,1	1.491,8	63,2	4,2%	1.555,1	1.491,8	63,2	4,2%
ESRA08	1.535,4	1.470,7	64,7	4,4%	1.535,4	1.470,7	64,7	4,4%
ESRA02	1.521,5	1.460,0	61,5	4,2%	1.521,5	1.460,0	61,5	4,2%
SES-SJU	1.506,7	1.445,0	61,7	4,3%	1.506,7	1.445,0	61,7	4,3%
SES-RP2	1.497,4	1.434,1	63,3	4,4%	1.497,4	1.434,1	63,3	4,4%
EU28	1.443,8	1.384,4	59,4	4,3%	1.443,8	1.384,4	59,4	4,3%
EU27	1.441,7	1.382,9	58,7	4,2%	1.441,7	1.382,9	58,7	4,2%
FABEC	1.023,8	983,9	40,0	4,1%	1.023,8	983,9	40,0	4,1%
France	593,2	576,2	17,0	3,0%	593,2	576,2	17,0	3,0%
Germany	478,0	458,8	19,3	4,2%	478,0	458,8	19,3	4,2%
UK-Ireland FAB	368,7	358,7	10,0	2,8%	368,7	358,7	10,0	2,8%
UK	364,0	352,7	11,2	3,2%	364,0	352,7	11,2	3,2%
Switzerland	324,9	313,6	11,3	3,6%	324,9	313,6	11,3	3,6%
FAB CE	284,0	281,0	3,0	1,1%	284,0	281,0	3,0	1,1%
BLUE MED FAB	294,1	271,8	22,3	8,2%	294,1	271,8	22,3	8,2%
Italy	245,6	225,5	20,2	8,9%	245,6	225,5	20,2	8,9%
Austria	195,5	190,8	4,7	2,5%	195,5	190,8	4,7	2,5%
Belgium/Luxembourg	160,2	150,8	9,4	6,2%	160,2	150,8	9,4	6,2%
South West FAB	160,0	148,5	11,5	7,8%	160,0	148,5	11,5	7,8%



TRAFFIC PER STATE – January 2018

AVERAGE DAILY FLIGHTS – PART 2

STATE	MONTH CURRENT YEAR	MONTH PREVIOUS YEAR	MONTH CHANGE	MONTH GROWTH	YTD CURRENT YEAR	YTD PREVIOUS YEAR	YTD CHANGE	YTD GROWTH
Spain	149,8	137,5	12,4	9,0%	149,8	137,5	12,4	9,0%
NEFAB	119,9	113,7	6,2	5,4%	119,9	113,7	6,2	5,4%
Netherlands	116,9	110,3	6,6	6,0%	116,9	110,3	6,6	6,0%
DK-SE FAB	108,7	105,2	3,5	3,4%	108,7	105,2	3,5	3,4%
Baltic FAB	102,9	99,4	3,5	3,6%	102,9	99,4	3,5	3,6%
Czech Republic	95,6	96,6	-1,0	-1,0%	95,6	96,6	-1,0	-1,0%
Turkey	95,8	92,8	3,0	3,3%	95,8	92,8	3,0	3,3%
Poland	94,5	90,7	3,8	4,2%	94,5	90,7	3,8	4,2%
Sweden	86,3	85,6	0,7	0,9%	86,3	85,6	0,7	0,9%
Ireland	59,6	64,0	-4,5	-7,0%	59,6	64,0	-4,5	-7,0%
Norway	66,6	63,2	3,5	5,5%	66,6	63,2	3,5	5,5%
Danube FAB	64,4	63,0	1,5	2,3%	64,4	63,0	1,5	2,3%
Hungary	59,0	57,3	1,7	3,0%	59,0	57,3	1,7	3,0%
Greece	58,5	55,1	3,4	6,1%	58,5	55,1	3,4	6,1%
Belarus	53,5	53,8	-0,4	-0,7%	53,5	53,8	-0,4	-0,7%
Serbia&Montenegro	54,6	53,4	1,3	2,4%	54,6	53,4	1,3	2,4%
Croatia	55,9	50,9	4,9	9,7%	55,9	50,9	4,9	9,7%
Slovakia	49,7	49,1	0,6	1,3%	49,7	49,1	0,6	1,3%
Bulgaria	49,7	48,7	1,1	2,2%	49,7	48,7	1,1	2,2%



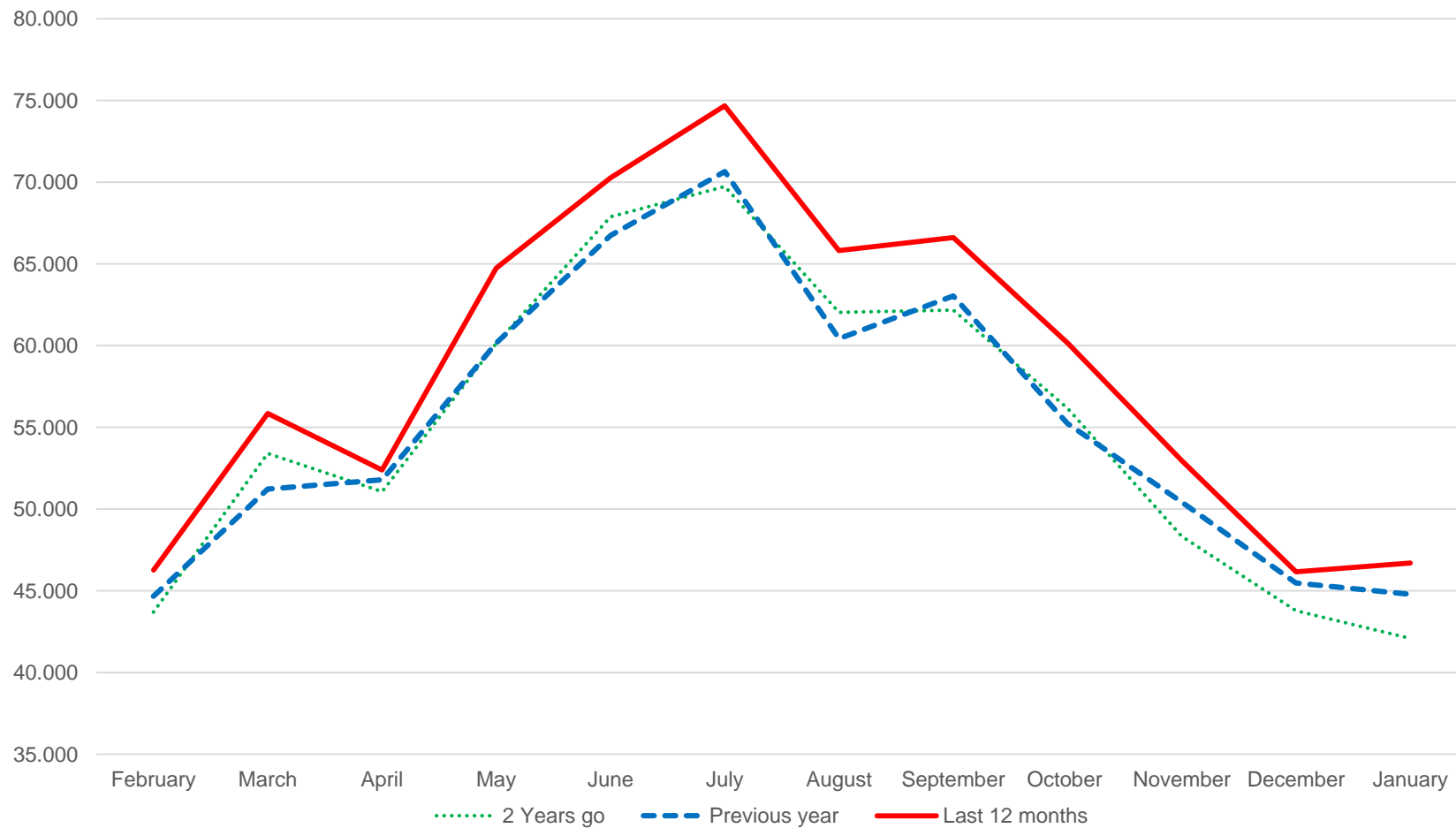
TRAFFIC PER STATE – January 2018

AVERAGE DAILY FLIGHTS - PART 3

STATE	MONTH CURRENT YEAR	MONTH PREVIOUS YEAR	MONTH CHANGE	MONTH GROWTH	YTD CURRENT YEAR	YTD PREVIOUS YEAR	YTD CHANGE	YTD GROWTH
Denmark	50,2	46,5	3,7	8,0%	50,2	46,5	3,7	8,0%
Romania	41,3	42,2	-0,9	-2,1%	41,3	42,2	-0,9	-2,1%
Slovenia	42,9	39,6	3,3	8,3%	42,9	39,6	3,3	8,3%
Morocco	37,0	36,2	0,8	2,3%	37,0	36,2	0,8	2,3%
Finland	36,0	33,7	2,3	6,8%	36,0	33,7	2,3	6,8%
Cyprus	35,0	32,7	2,4	7,2%	35,0	32,7	2,4	7,2%
Bosnia-Herzegovina	32,0	30,4	1,7	5,5%	32,0	30,4	1,6	5,4%
Egypt	29,4	29,4	0,0	0,1%	29,4	29,4	0,0	0,1%
Lisbon FIR	32,1	29,4	2,8	9,5%	32,1	29,4	2,8	9,5%
Ukraine	27,5	27,6	-0,1	-0,5%	27,5	27,6	-0,1	-0,5%
Lithuania	26,2	27,3	-1,0	-3,8%	26,2	27,3	-1,0	-3,8%
Latvia	22,3	22,8	-0,5	-2,0%	22,3	22,8	-0,5	-2,0%
Canary Islands	17,5	16,4	1,2	7,1%	17,5	16,4	1,2	7,1%
Estonia	15,2	15,6	-0,4	-2,5%	15,2	15,6	-0,4	-2,5%
Malta	12,0	15,1	-3,1	-20,7%	12,0	15,1	-3,1	-20,7%
Albania	12,9	14,5	-1,6	-11,3%	12,9	14,5	-1,6	-11,3%
Azerbaijan	12,5	13,9	-1,4	-10,2%	12,5	13,9	-1,4	-10,2%
Iceland	17,1	13,5	3,5	26,0%	17,1	13,5	3,5	26,0%
Santa Maria FIR	17,8	13,5	4,3	31,8%	17,8	13,6	4,2	30,9%
FYROM	12,5	10,8	1,7	15,5%	12,5	10,8	1,7	15,5%
Georgia	7,5	8,9	-1,4	-15,5%	7,5	9,4	-1,8	-19,6%
Tunisia	8,3	8,0	0,2	2,8%	8,3	8,0	0,2	2,8%
Armenia	4,6	4,5	0,1	1,4%	4,6	4,5	0,1	1,4%
Moldova	3,4	3,7	-0,3	-7,9%	3,4	3,7	-0,3	-7,9%
Libya	3,0	3,1	-0,1	-3,1%	3,0	3,1	-0,1	-3,1%



DEPARTURES, ARRIVALS, INTERNALS AND OVERFLIGHTS (DAIO) REPORT BUSINESS AVIATION





This report is provided solely to EBAA Members for information purposes only and no representation, warranties or other assurances, express or implied, are given as to the quality, accuracy, or completeness of the information contained in, or provided in connection with the report

Recipients of this report must determine for themselves whether any matters referred to are suitable for their purposes

Neither EBAA nor any of their affiliates, agents, partners, representatives, consultants or any other company, firm or organisation involved in producing this report, nor any of their successors or assign or any employees, officer or director of any of them shall have any liability with respect to the use or reliance on the report by any person, irrespective of any negligence, omission or default, on the part of the foregoing persons

Any reproduction or publication of this report, in whole or in part, is strictly forbidden without the written consent of the EBAA