



BUSINESS AVIATION
TRAFFIC TRACKER EUROPE

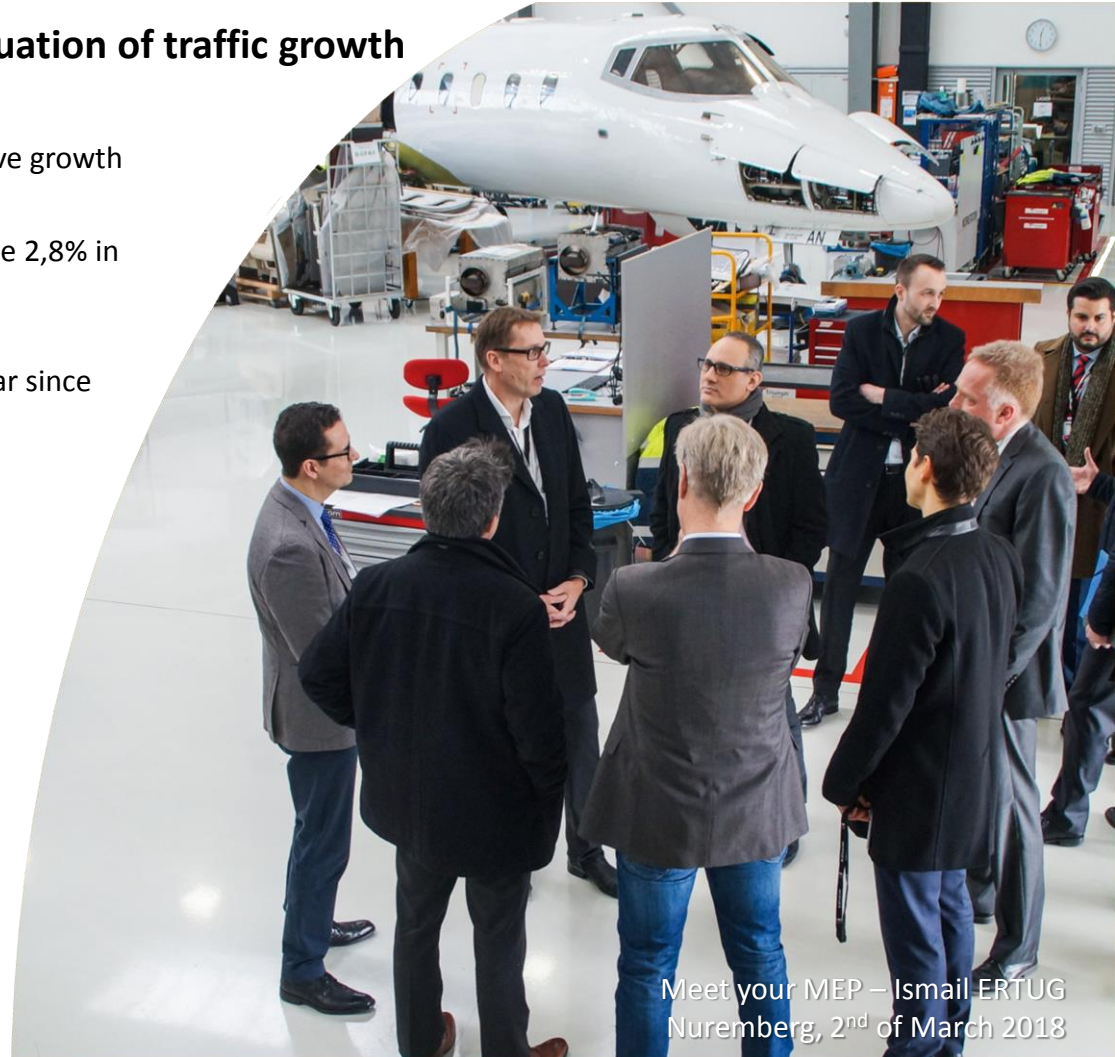
February 2018



EXECUTIVE SUMMARY

February starts a 2018 with the continuation of traffic growth

- February 2018 marks the 16th month of consecutive growth
- With 1300 additional movements, BizAv traffic rose 2,8% in February 2018 versus February 2017
- January - February 2018 is the best start of the year since 2012.
- With respectively +21,6%, +15,0% and +9,1% traffic growth, Biggin Hill, Farnborough and Geneva Cointrin are the 3 Airports with the best start of 2018.
- The Italian internal market (4th biggest market in Europe) experienced a solid traffic growth of +18,5% in 2018 so far compared with the same period in 2017



Meet your MEP – Ismail ERTUG
Nuremberg, 2nd of March 2018



DEPARTURES, ARRIVALS, INTERNALS AND OVERFLIGHTS (DAIO) REPORT

TOTAL FLIGHTS

Business Aviation (Single European Sky Area)

Month	Arrival			Departure			Internal			Overflight			Previous Year	Current Year	Growth
	Previous Year	Current Year	Growth	Previous Year	Current Year	Growth	Previous Year	Current Year	Growth	Previous Year	Current Year	Growth			
Mar 2017	3.846	4.047	5,2%	3.875	3.981	2,7%	42.843	47.131	10,0%	666	695	4,4%	51.230	55.854	9,0%
Apr 2017	4.009	4.097	2,2%	3.849	4.056	5,4%	43.276	43.425	0,3%	670	810	20,9%	51.804	52.388	1,1%
May 2017	4.454	4.627	3,9%	4.280	4.515	5,5%	50.633	54.768	8,2%	804	830	3,2%	60.171	64.740	7,6%
Jun 2017	4.812	5.107	6,1%	4.624	4.829	4,4%	56.565	59.565	5,3%	736	760	3,3%	66.737	70.261	5,3%
Jul 2017	4.994	5.174	3,6%	4.947	5.190	4,9%	59.926	63.580	6,1%	790	740	-6,3%	70.657	74.684	5,7%
Aug 2017	4.564	4.864	6,6%	4.602	4.952	7,6%	50.521	55.235	9,3%	748	770	2,9%	60.435	65.821	8,9%
Sep 2017	4.573	4.791	4,8%	4.459	4.697	5,3%	53.256	56.325	5,8%	747	803	7,5%	63.035	66.616	5,7%
Oct 2017	4.229	4.501	6,4%	4.328	4.618	6,7%	45.939	50.124	9,1%	739	915	23,8%	55.235	60.158	8,9%
Nov 2017	3.930	4.077	3,7%	3.886	3.962	2,0%	41.886	44.261	5,7%	720	658	-8,6%	50.422	52.958	5,0%
Dec 2017	3.639	3.675	1,0%	3.772	3.783	0,3%	37.374	38.022	1,7%	695	693	-0,3%	45.480	46.173	1,5%
Jan 2018	3.853	3.934	2,1%	3.627	3.737	3,0%	36.709	38.454	4,8%	606	582	-4,0%	44.795	46.707	4,3%
Feb 2018	3.453	3.441	-0,3%	3.457	3.432	-0,7%	38.762	40.085	3,4%	598	597	-0,2%	46.270	47.555	2,8%
Grand Total	50.356	52.335	3,9%	49.706	51.752	4,1%	557.690	590.975	6,0%	8.519	8.853	3,9%	666.271	703.915	5,6%






STATES – February 2018 AVERAGE DAILY FLIGHTS

STATE	MONTH CURRENT YEAR	MONTH GROWTH	YTD CURRENT YEAR	YTD GROWTH
ECAC	1.750,7	2,8%	1.647,9	3,5%
ESRA08	1.731,8	2,8%	1.628,6	3,6%
SES-RP2	1.691,3	3,0%	1.589,4	3,7%
EU28	1.633,1	3,2%	1.533,6	3,8%
FABEC	1.165,2	3,3%	1.090,9	3,7%
UK-Ireland FAB	412,9	0,1%	389,7	1,4%
BLUE MED FAB	333,4	4,4%	312,7	6,3%
FAB CE	307,2	1,7%	295,0	1,4%
South West FAB	188,5	5,7%	173,5	6,7%
DK-SE FAB	133,0	5,7%	120,3	4,6%
NEFAB	129,4	-0,7%	124,4	2,3%
Baltic FAB	110,4	3,5%	106,5	3,5%
Danube FAB	73,1	13,9%	68,6	7,9%



(AIRPORTS) February 2018 AVERAGE DAILY DEPARTURES

Business Aviation

RANK	ICAO CODE	NAME	MONTH CURRENT YEAR	MONTH GROWTH	YTD CURRENT YEAR	YTD GROWTH
1	LFPB	PARIS LE BOURGET	59,8	-0,7%	60,0	2,3%
2	LSGG	GENEVE COINTRIN	41,4	6,0%	42,2	9,1%
3	EGGW	LONDON/LUTON	37,5	0,1%	34,5	-1,7%
4	EGLF	FARNBOROUGH CIV	36,6	17,6%	32,4	15,0%
5 	LFMN	NICE	29,6	11,7%	28,4	8,9%
6 	LSZH	ZURICH	27,9	1,6%	31,4	4,6%
7	LIML	MILANO LINATE	23,3	3,3%	20,9	1,6%
8 	EGKB	BIGGIN HILL	20,9	18,7%	18,8	21,6%
9	LOWW	WIEN SCHWECHAT	19,0	5,5%	18,1	3,3%
10	LIRA	ROMA CIAMPINO	17,7	-0,6%	17,1	8,3%



FLOWS – February 2018 AVERAGE DAILY FLIGHTS

Business Aviation

ORIGIN	DESTINATION	MONTH CURRENT YEAR	MONTH GROWTH	YTD CURRENT YEAR	YTD GROWTH
France	France	137,8	-1,6%	130,6	-1,6%
Germany	Germany	127,4	6,9%	114,4	7,4%
UK	UK	96,2	-5,7%	94,6	-1,1%
Norway	Norway	49,4	-1,2%	48,5	3,5%
Italy	Italy	44,6	9,6%	42,6	18,5%
Sweden	Sweden	41,3	7,0%	37,6	4,5%
Spain	Spain	32,0	10,9%	28,7	5,0%
UK	France	31,9	3,4%	27,2	2,4%
France	UK	31,7	4,0%	27,3	2,7%
Turkey	Turkey	29,0	-1,6%	27,9	0,7%



TRAFFIC PER STATE – February 2018

AVERAGE DAILY FLIGHTS – PART 1

STATE	MONTH CURRENT YEAR	MONTH PREVIOUS YEAR	MONTH CHANGE	MONTH GROWTH	YTD CURRENT YEAR	YTD PREVIOUS YEAR	YTD CHANGE	YTD GROWTH
ECAC	1.750,7	1.703,1	47,6	2,8%	1.647,9	1.592,1	55,8	3,5%
ESRA08	1.731,8	1.684,7	47,1	2,8%	1.628,6	1.572,2	56,3	3,6%
ESRA02	1.715,3	1.671,1	44,1	2,6%	1.613,5	1.560,2	53,3	3,4%
SES-SJU	1.698,4	1.652,5	45,9	2,8%	1.597,7	1.543,5	54,2	3,5%
SES-RP2	1.691,3	1.642,5	48,8	3,0%	1.589,4	1.533,0	56,4	3,7%
EU28	1.633,1	1.581,9	51,2	3,2%	1.533,6	1.478,1	55,5	3,8%
EU27	1.631,4	1.579,5	51,9	3,3%	1.531,7	1.476,2	55,5	3,8%
FABEC	1.165,2	1.127,9	37,3	3,3%	1.090,9	1.052,2	38,7	3,7%
France	676,6	648,7	27,9	4,3%	632,8	610,6	22,2	3,6%
Germany	546,2	525,3	20,9	4,0%	510,4	490,3	20,1	4,1%
UK-Ireland FAB	412,9	412,4	0,5	0,1%	389,7	384,2	5,5	1,4%
UK	407,7	406,7	1,0	0,2%	384,7	378,4	6,4	1,7%
Switzerland	352,4	346,2	6,2	1,8%	337,9	329,1	8,9	2,7%
BLUE MED FAB	333,4	319,3	14,1	4,4%	312,7	294,3	18,4	6,3%
FAB CE	307,2	301,9	5,3	1,7%	295,0	290,9	4,1	1,4%
Italy	275,9	263,8	12,0	4,6%	260,0	243,7	16,3	6,7%
Austria	208,8	207,4	1,4	0,7%	201,8	198,7	3,2	1,6%
South West FAB	188,5	178,4	10,1	5,7%	173,5	162,7	10,9	6,7%
Belgium/Luxembourg	183,1	172,9	10,3	6,0%	171,1	161,3	9,8	6,1%



TRAFFIC PER STATE – February 2018

AVERAGE DAILY FLIGHTS – PART 2

STATE	MONTH CURRENT YEAR	MONTH PREVIOUS YEAR	MONTH CHANGE	MONTH GROWTH	YTD CURRENT YEAR	YTD PREVIOUS YEAR	YTD CHANGE	YTD GROWTH
Spain	176,6	167,1	9,5	5,7%	162,5	151,5	11,0	7,3%
Netherlands	133,6	135,9	-2,4	-1,7%	124,8	122,5	2,3	1,9%
NEFAB	129,4	130,2	-0,9	-0,7%	124,4	121,5	2,8	2,3%
DK-SE FAB	133,0	125,8	7,2	5,7%	120,3	115,0	5,3	4,6%
Baltic FAB	110,4	106,6	3,7	3,5%	106,5	102,8	3,6	3,5%
Sweden	106,1	102,5	3,7	3,6%	95,7	93,6	2,1	2,3%
Czech Republic	103,0	102,0	1,0	1,0%	99,1	99,2	0,0	0,0%
Turkey	105,0	98,9	6,1	6,2%	100,2	95,7	4,5	4,7%
Poland	99,1	95,3	3,9	4,0%	96,7	92,9	3,8	4,1%
Norway	71,9	73,0	-1,1	-1,6%	69,1	67,8	1,3	1,9%
Danube FAB	73,1	64,2	8,9	13,9%	68,6	63,6	5,0	7,9%
Greece	61,9	61,0	0,9	1,5%	60,1	57,9	2,2	3,8%
Ireland	59,6	61,0	-1,4	-2,3%	59,6	62,6	-3,0	-4,8%
Denmark	62,8	59,1	3,8	6,3%	56,2	52,5	3,7	7,1%
Hungary	63,3	58,5	4,7	8,1%	61,0	57,9	3,1	5,4%
Croatia	56,9	54,3	2,6	4,7%	56,3	52,5	3,8	7,3%
Serbia&Montenegro	57,6	54,2	3,4	6,3%	56,0	53,7	2,3	4,2%
Belarus	52,8	53,9	-1,1	-2,0%	53,1	53,8	-0,7	-1,3%
Slovakia	56,9	52,1	4,8	9,1%	53,1	50,5	2,6	5,1%



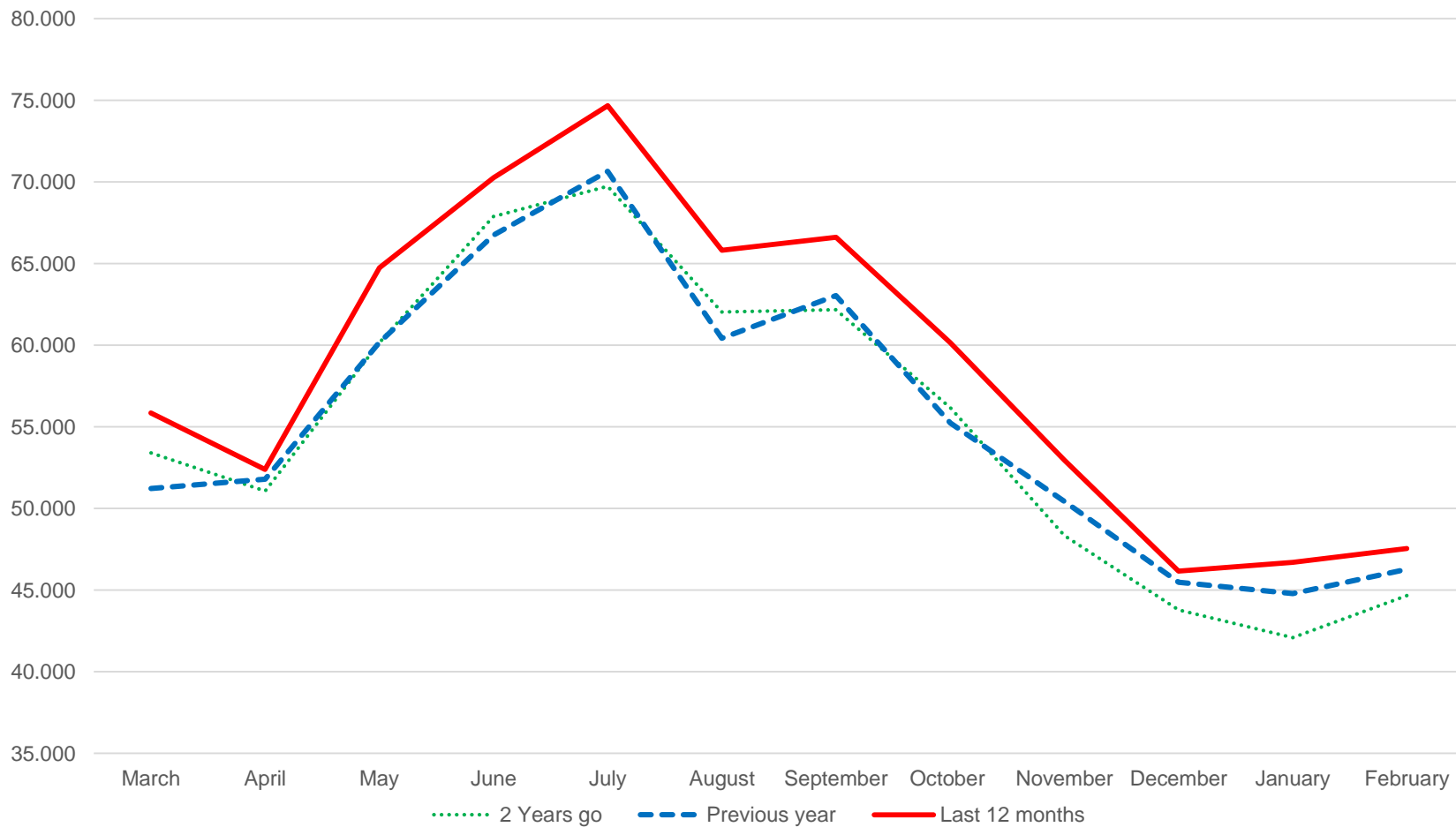
TRAFFIC PER STATE – February 2018

AVERAGE DAILY FLIGHTS - PART 3

STATE	MONTH CURRENT YEAR	MONTH PREVIOUS YEAR	MONTH CHANGE	MONTH GROWTH	YTD CURRENT YEAR	YTD PREVIOUS YEAR	YTD CHANGE	YTD GROWTH
Bulgaria	57,1	48,9	8,2	16,7%	53,2	48,8	4,4	9,1%
Romania	47,2	42,4	4,8	11,2%	44,1	42,3	1,8	4,2%
Slovenia	44,7	39,9	4,8	12,1%	43,7	39,9	3,9	9,7%
Cyprus	41,6	39,0	2,6	6,6%	38,1	35,7	2,5	6,9%
Finland	39,5	36,8	2,7	7,4%	37,7	35,2	2,5	7,1%
Morocco	34,9	35,0	-0,1	-0,3%	36,0	35,6	0,4	1,1%
Lisbon FIR	36,8	32,9	4,0	12,1%	34,4	31,0	3,3	10,8%
Lithuania	32,0	31,1	1,0	3,1%	29,0	29,1	-0,1	-0,3%
Egypt	29,1	30,6	-1,5	-5,0%	29,3	30,0	-0,7	-2,4%
Bosnia-Herzegovina	31,5	30,0	1,6	5,2%	31,8	30,2	1,6	5,3%
Ukraine	28,8	30,0	-1,2	-4,2%	28,1	28,7	-0,7	-2,3%
Latvia	22,8	26,3	-3,5	-13,3%	22,5	24,4	-1,9	-7,8%
Canary Islands	20,9	18,5	2,4	13,1%	19,2	17,4	1,8	10,1%
Malta	15,8	17,1	-1,4	-7,9%	13,8	16,1	-2,3	-14,2%
Albania	13,2	15,9	-2,7	-16,9%	13,1	15,2	-2,1	-14,1%
Estonia	13,9	14,6	-0,7	-4,9%	14,6	15,1	-0,5	-3,6%
Santa Maria FIR	14,4	13,8	0,6	4,1%	16,2	13,7	2,4	17,5%
Iceland	13,9	13,3	0,6	4,6%	15,6	13,4	2,1	15,9%
Azerbaijan	11,8	13,1	-1,4	-10,4%	12,1	13,5	-1,4	-10,3%
FYROM	13,6	11,8	1,9	15,8%	13,1	11,3	1,7	15,1%
Georgia	8,4	9,1	-0,7	-8,2%	7,9	9,3	-1,3	-14,4%
Tunisia	7,8	8,4	-0,6	-7,2%	8,1	8,2	-0,2	-2,1%
Armenia	4,0	3,8	0,1	3,7%	4,3	4,2	0,1	2,4%
Libya	5,5	3,8	1,8	46,7%	4,2	3,4	0,8	22,9%
Moldova	4,0	3,2	0,8	25,6%	3,7	3,5	0,2	6,9%



DEPARTURES, ARRIVALS, INTERNALS AND OVERFLIGHTS (DAIO) REPORT BUSINESS AVIATION





This report is provided solely to EBAA Members for information purposes only and no representation, warranties or other assurances, express or implied, are given as to the quality, accuracy, or completeness of the information contained in, or provided in connection with the report

Recipients of this report must determine for themselves whether any matters referred to are suitable for their purposes

Neither EBAA nor any of their affiliates, agents, partners, representatives, consultants or any other company, firm or organisation involved in producing this report, nor any of their successors or assign or any employees, officer or director of any of them shall have any liability with respect to the use or reliance on the report by any person, irrespective of any negligence, omission or default, on the part of the foregoing persons

Any reproduction or publication of this report, in whole or in part, is strictly forbidden without the written consent of the EBAA