



BUSINESS AVIATION
TRAFFIC TRACKER EUROPE

March 2018



EXECUTIVE SUMMARY

Slight dip in March 2018 traffic vs. March 2017

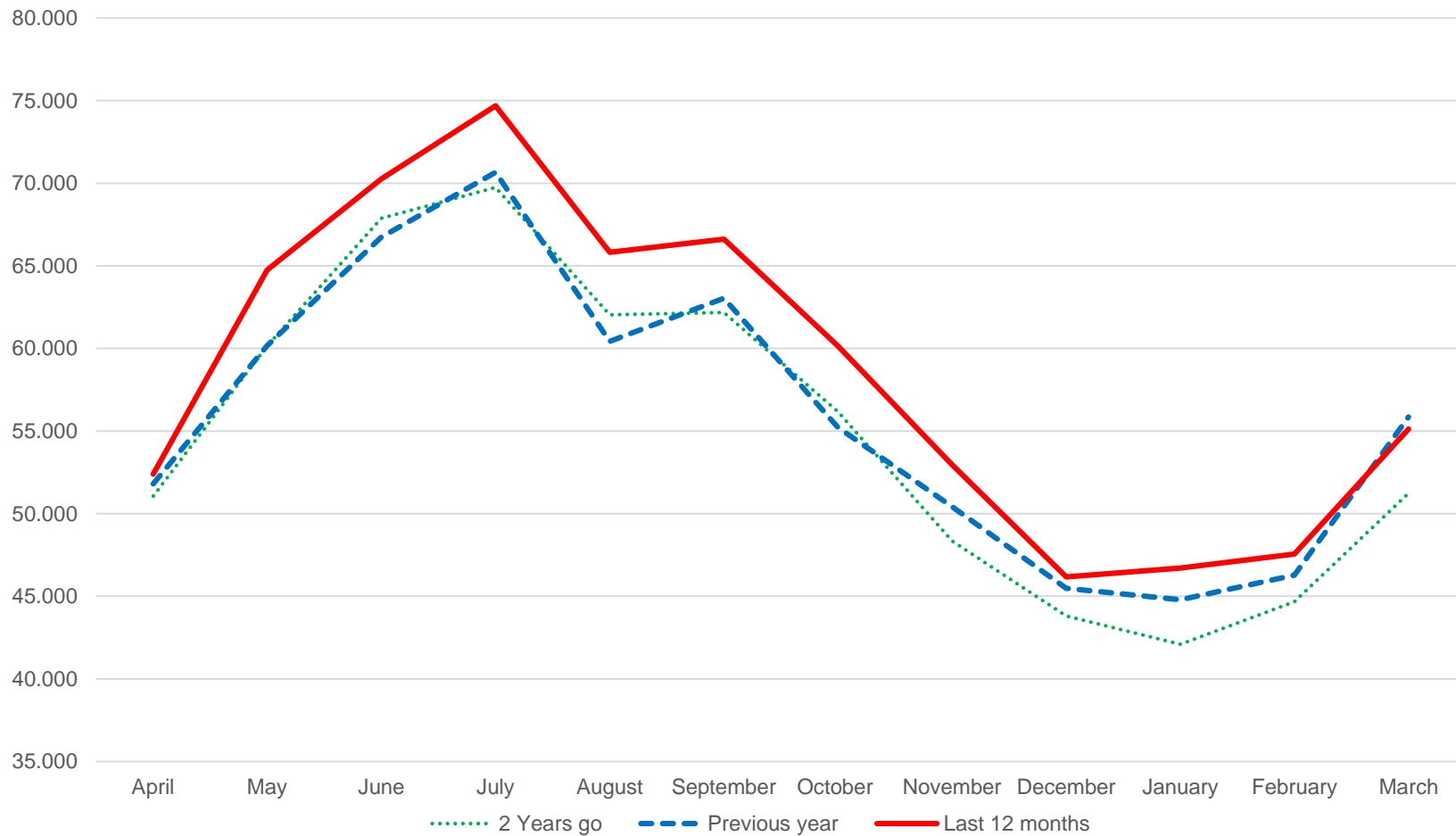
- March 2018 traffic dipped slightly (-1.3%) compared to the same month the previous year, marking the end of 16 months of consecutive traffic growth
- The January - March 2018 period was the best start to the year since 2012
- The last time Business Aviation experienced 16 months of growth was November 2006 - February 2008
- Biggin Hill (+14.4%), Farnborough (+13.4%) and Nice (+7.8%) airports experienced the highest traffic growth for the 2018 'start'



Associate Members Advisory Council (AMAC) Convention
Brussels, 14th of March 2018



DEPARTURES, ARRIVALS, INTERNALS AND OVERFLIGHTS (DAIO) REPORT BUSINESS AVIATION





DEPARTURES, ARRIVALS, INTERNALS AND OVERFLIGHTS (DAIO) REPORT

TOTAL FLIGHTS

Business Aviation (Single European Sky Area)

Month	Arrival			Departure			Internal			Overflight			Previous Year	Current Year	Growth
	Previous Year	Current Year	Growth	Previous Year	Current Year	Growth	Previous Year	Current Year	Growth	Previous Year	Current Year	Growth			
Apr 2017	4.009	4.097	2,2%	3.849	4.056	5,4%	43.276	43.425	0,3%	670	810	20,9%	51.804	52.388	1,1%
May 2017	4.454	4.627	3,9%	4.280	4.515	5,5%	50.633	54.768	8,2%	804	830	3,2%	60.171	64.740	7,6%
Jun 2017	4.812	5.107	6,1%	4.624	4.829	4,4%	56.565	59.565	5,3%	736	760	3,3%	66.737	70.261	5,3%
Jul 2017	4.994	5.174	3,6%	4.947	5.190	4,9%	59.926	63.580	6,1%	790	740	-6,3%	70.657	74.684	5,7%
Aug 2017	4.564	4.864	6,6%	4.602	4.952	7,6%	50.521	55.235	9,3%	748	770	2,9%	60.435	65.821	8,9%
Sep 2017	4.573	4.791	4,8%	4.459	4.697	5,3%	53.256	56.325	5,8%	747	803	7,5%	63.035	66.616	5,7%
Oct 2017	4.229	4.501	6,4%	4.328	4.618	6,7%	45.939	50.124	9,1%	739	915	23,8%	55.235	60.158	8,9%
Nov 2017	3.930	4.077	3,7%	3.886	3.962	2,0%	41.886	44.261	5,7%	720	658	-8,6%	50.422	52.958	5,0%
Dec 2017	3.639	3.675	1,0%	3.772	3.783	0,3%	37.374	38.022	1,7%	695	693	-0,3%	45.480	46.173	1,5%
Jan 2018	3.853	3.934	2,1%	3.627	3.737	3,0%	36.709	38.454	4,8%	606	582	-4,0%	44.795	46.707	4,3%
Feb 2018	3.453	3.441	-0,3%	3.457	3.432	-0,7%	38.762	40.085	3,4%	598	597	-0,2%	46.270	47.555	2,8%
Mar 2018	4.047	4.027	-0,5%	3.981	4.042	1,5%	47.131	46.343	-1,7%	695	714	2,7%	55.854	55.126	-1,3%
Grand Total	50.557	52.315	3,5%	49.812	51.813	4,0%	561.978	590.187	5,0%	8.548	8.872	3,8%	670.895	703.187	4,8%






STATES – March 2018 AVERAGE DAILY FLIGHTS

STATE	MONTH CURRENT YEAR	MONTH GROWTH	YTD CURRENT YEAR	YTD GROWTH
ECAC	1.829,0	-1,7%	1.710,3	1,5%
ESRA08	1.807,6	-1,7%	1.690,2	1,6%
SES-RP2	1.768,5	-1,2%	1.651,1	1,8%
EU28	1.713,5	-0,9%	1.595,6	2,0%
FABEC	1.222,1	0,3%	1.136,1	2,4%
UK-Ireland FAB	411,4	-5,8%	397,1	-1,3%
BLUE MED FAB	372,7	2,2%	333,4	4,7%
FAB CE	328,3	2,8%	306,5	1,9%
South West FAB	202,8	9,6%	183,6	7,8%
DK-SE FAB	130,8	0,7%	123,9	3,1%
NEFAB	127,6	-6,5%	125,5	-1,0%
Baltic FAB	118,9	6,7%	110,7	4,7%
Danube FAB	72,4	5,1%	69,9	6,9%



(AIRPORTS) March 2018 AVERAGE DAILY DEPARTURES

Business Aviation

RANK	ICAO CODE	NAME	MONTH CURRENT YEAR	MONTH GROWTH	YTD CURRENT YEAR	YTD GROWTH
1	LFPB	PARIS LE BOURGET	68,1	-4,3%	62,8	-0,3%
2	LSGG	GENEVE COINTRIN	45,8	1,4%	43,4	6,2%
3	EGGW	LONDON/LUTON	39,6	5,4%	36,3	0,8%
4	EGLF	FARNBOROUGH CIV	34,1	10,6%	33,0	13,4%
5	LFMN	NICE	32,4	6,0%	29,7	7,8%
6	LSZH	ZURICH	31,0	3,2%	31,3	4,1%
7	LIML	MILANO LINATE	23,8	-0,7%	21,9	0,7%
8 	LIRA	ROMA CIAMPINO	18,2	-8,0%	17,4	1,8%
9 	EGKB	BIGGIN HILL	17,9	2,4%	18,5	14,4%
10 	EDDM	MUENCHEN 2	17,0	-14,2%	17,1	-9,3%



FLOWS – March 2018 AVERAGE DAILY FLIGHTS

Business Aviation

ORIGIN	DESTINATION	MONTH CURRENT YEAR	MONTH GROWTH	YTD CURRENT YEAR	YTD GROWTH
France	France	157,0	-2,6%	139,7	-2,0%
Germany	Germany	123,9	-8,0%	117,7	1,3%
UK	UK	102,1	-10,0%	97,2	-4,5%
Norway	Norway	47,2	-12,0%	48,1	-2,3%
Italy	Italy	45,5	-8,5%	43,6	7,1%
Sweden	Sweden	34,8	-6,5%	36,6	0,6%
Spain	Spain	34,5	3,1%	30,7	4,2%
France	UK	30,4	-1,4%	28,4	1,2%
UK	France	30,3	1,1%	28,3	1,9%
Turkey	Turkey	28,9	-22,9%	28,3	-9,1%



TRAFFIC PER STATE – March 2018

AVERAGE DAILY FLIGHTS – PART 1

STATE	MONTH CURRENT YEAR	MONTH PREVIOUS YEAR	MONTH CHANGE	MONTH GROWTH	YTD CURRENT YEAR	YTD PREVIOUS YEAR	YTD CHANGE	YTD GROWTH
ECAC	1.829,0	1.860,8	-31,8	-1,7%	1.710,3	1.684,7	25,6	1,5%
ESRA08	1.807,6	1.839,0	-31,4	-1,7%	1.690,2	1.664,1	26,1	1,6%
ESRA02	1.789,0	1.824,8	-35,8	-2,0%	1.673,9	1.651,4	22,6	1,4%
SES-SJU	1.778,3	1.801,7	-23,5	-1,3%	1.659,9	1.632,4	27,4	1,7%
SES-RP2	1.768,5	1.789,6	-21,2	-1,2%	1.651,1	1.621,4	29,7	1,8%
EU28	1.713,5	1.728,7	-15,1	-0,9%	1.595,6	1.564,4	31,2	2,0%
EU27	1.710,9	1.725,7	-14,8	-0,9%	1.593,4	1.562,2	31,3	2,0%
FABEC	1.222,1	1.218,0	4,1	0,3%	1.136,1	1.109,3	26,8	2,4%
France	718,0	695,6	22,5	3,2%	662,1	639,9	22,3	3,5%
Germany	564,6	574,9	-10,3	-1,8%	529,1	519,5	9,6	1,8%
UK-Ireland FAB	411,4	436,5	-25,1	-5,8%	397,1	402,2	-5,0	-1,3%
UK	405,6	430,0	-24,4	-5,7%	391,9	396,1	-4,2	-1,1%
BLUE MED FAB	372,7	364,7	8,0	2,2%	333,4	318,6	14,8	4,7%
Switzerland	360,5	348,4	12,1	3,5%	345,7	335,7	10,0	3,0%
FAB CE	328,3	319,4	8,8	2,8%	306,5	300,8	5,7	1,9%
Italy	308,8	304,0	4,8	1,6%	276,8	264,4	12,3	4,7%
Austria	216,0	210,3	5,7	2,7%	206,7	202,7	4,1	2,0%
Belgium/Luxembourg	206,2	200,6	5,6	2,8%	183,2	174,8	8,4	4,8%
South West FAB	202,8	185,0	17,8	9,6%	183,6	170,4	13,2	7,8%



TRAFFIC PER STATE – March 2018

AVERAGE DAILY FLIGHTS – PART 2

STATE	MONTH CURRENT YEAR	MONTH PREVIOUS YEAR	MONTH CHANGE	MONTH GROWTH	YTD CURRENT YEAR	YTD PREVIOUS YEAR	YTD CHANGE	YTD GROWTH
Spain	190,3	173,1	17,2	9,9%	172,1	159,0	13,1	8,3%
Netherlands	146,7	150,0	-3,3	-2,2%	132,3	131,9	0,4	0,3%
NEFAB	127,6	136,5	-8,9	-6,5%	125,5	126,7	-1,2	-1,0%
DK-SE FAB	130,8	129,9	0,9	0,7%	123,9	120,1	3,8	3,1%
Baltic FAB	118,9	111,4	7,5	6,7%	110,7	105,8	5,0	4,7%
Turkey	101,8	108,8	-7,0	-6,4%	100,7	100,2	0,5	0,5%
Czech Republic	111,8	105,7	6,1	5,8%	103,5	101,4	2,1	2,0%
Sweden	100,3	103,3	-3,0	-2,9%	97,3	96,9	0,4	0,4%
Poland	108,3	99,5	8,8	8,9%	100,7	95,2	5,6	5,9%
Norway	70,8	77,7	-7,0	-9,0%	69,7	71,3	-1,6	-2,2%
Ireland	68,8	76,7	-7,9	-10,3%	62,8	67,5	-4,7	-7,0%
Danube FAB	72,4	68,8	3,5	5,1%	69,9	65,4	4,5	6,9%
Greece	71,0	67,9	3,1	4,6%	63,9	61,3	2,5	4,1%
Croatia	64,5	66,6	-2,1	-3,1%	59,2	57,4	1,8	3,1%
Hungary	64,2	64,8	-0,5	-0,8%	62,1	60,3	1,9	3,1%
Denmark	67,5	62,5	5,0	8,0%	60,1	55,9	4,2	7,4%
Serbia&Montenegro	61,9	61,0	0,9	1,4%	58,0	56,3	1,8	3,2%
Slovakia	57,4	54,6	2,8	5,2%	54,6	51,9	2,7	5,2%
Belarus	54,2	52,9	1,3	2,4%	53,5	53,5	0,0	0,0%



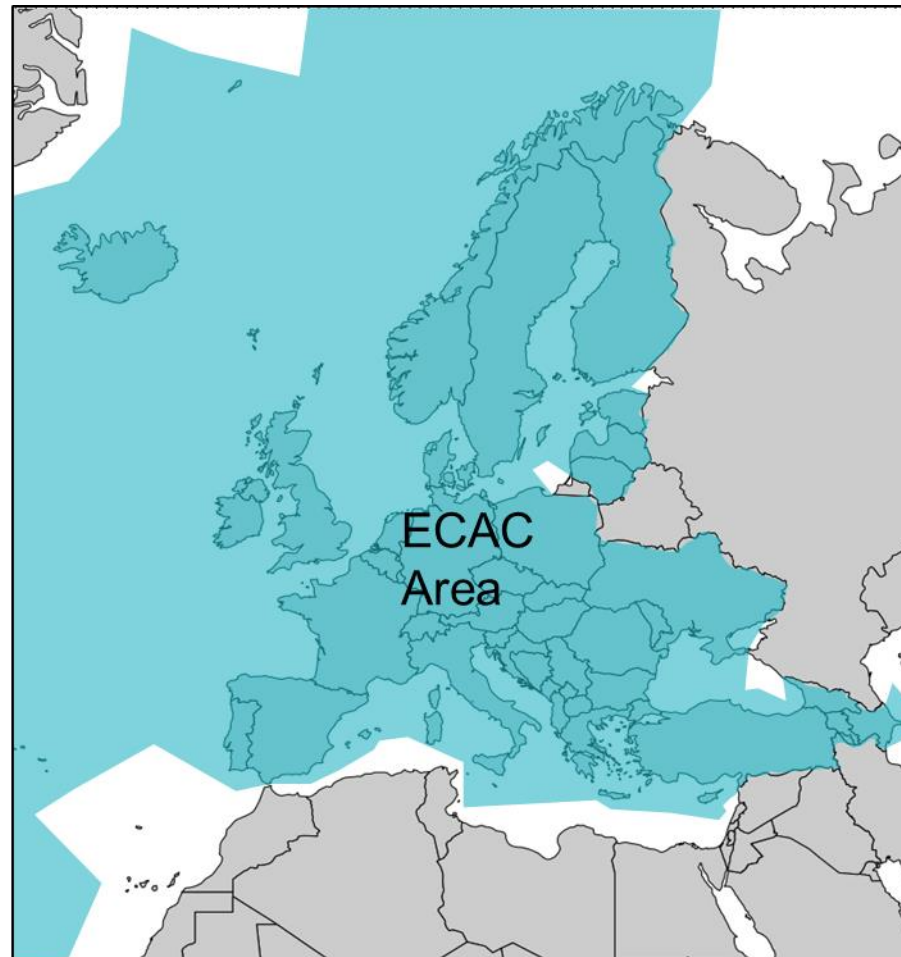
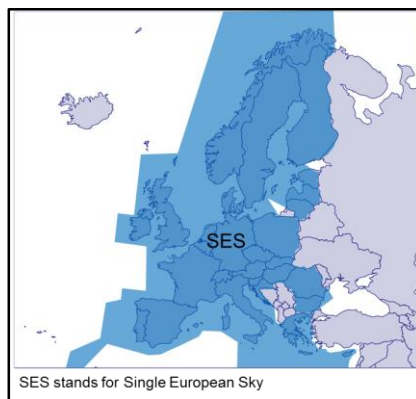
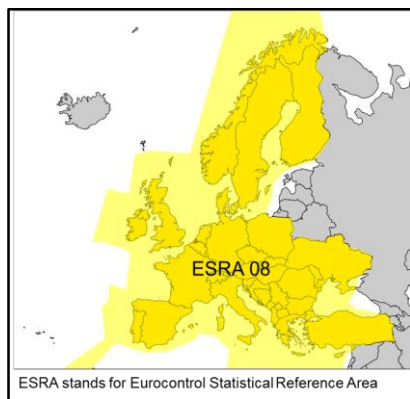
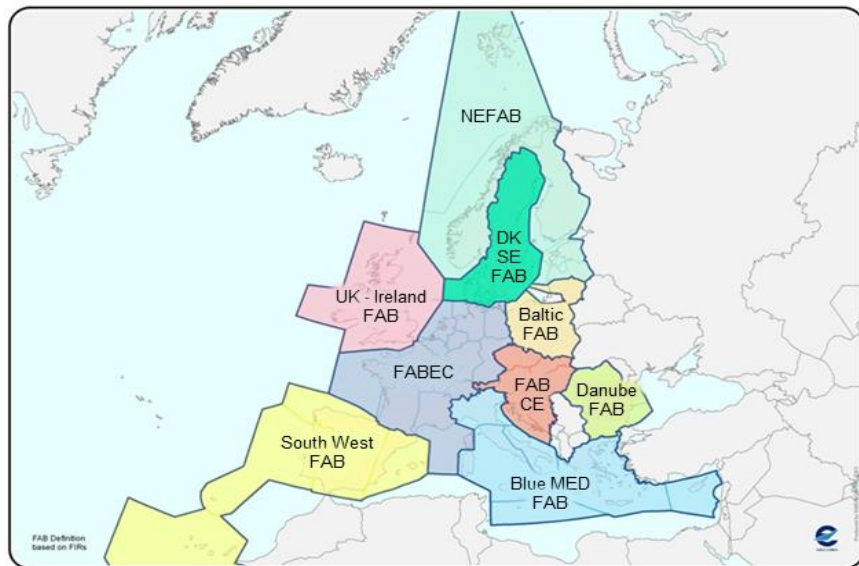
TRAFFIC PER STATE – March 2018

AVERAGE DAILY FLIGHTS - PART 3

STATE	MONTH CURRENT YEAR	MONTH PREVIOUS YEAR	MONTH CHANGE	MONTH GROWTH	YTD CURRENT YEAR	YTD PREVIOUS YEAR	YTD CHANGE	YTD GROWTH
Bulgaria	56,9	52,4	4,5	8,5%	54,5	50,0	4,4	8,9%
Romania	46,1	47,0	-1,0	-2,1%	44,8	43,9	0,8	1,9%
Slovenia	50,1	44,9	5,3	11,7%	45,9	41,6	4,4	10,5%
Cyprus	47,4	41,9	5,5	13,2%	41,3	37,8	3,5	9,3%
Finland	36,5	40,5	-4,0	-9,9%	37,3	37,0	0,3	0,7%
Bosnia-Herzegovina	35,6	37,1	-1,5	-3,9%	33,1	32,6	0,6	1,7%
Morocco	42,3	37,1	5,2	14,0%	38,2	36,1	2,0	5,7%
Lisbon FIR	39,8	34,4	5,4	15,6%	36,2	32,2	4,0	12,5%
Egypt	29,5	31,7	-2,3	-7,2%	29,3	30,6	-1,3	-4,1%
Lithuania	30,7	30,9	-0,2	-0,6%	29,6	29,7	-0,1	-0,4%
Ukraine	30,6	29,9	0,7	2,5%	29,0	29,1	-0,2	-0,6%
Latvia	26,4	25,3	1,1	4,3%	23,9	24,8	-0,9	-3,7%
Malta	18,3	20,0	-1,7	-8,7%	15,3	17,4	-2,1	-12,1%
Canary Islands	21,5	17,0	4,5	26,8%	20,0	17,3	2,7	15,8%
Albania	15,1	16,3	-1,2	-7,5%	13,7	15,6	-1,8	-11,7%
Iceland	17,1	16,2	1,0	6,0%	16,1	14,4	1,7	12,1%
Santa Maria FIR	15,1	15,4	-0,3	-1,9%	15,8	14,3	1,5	10,3%
FYROM	16,4	14,6	1,8	12,6%	14,2	12,5	1,8	14,1%
Estonia	17,8	14,2	3,7	26,0%	15,7	14,8	0,9	6,2%
Azerbaijan	13,8	13,8	-0,1	-0,5%	12,7	13,6	-0,9	-6,8%
Tunisia	10,2	10,1	0,1	1,0%	8,8	8,9	-0,1	-0,9%
Georgia	8,7	10,0	-1,3	-12,6%	8,2	9,5	-1,3	-13,8%
Armenia	4,5	4,9	-0,4	-7,9%	4,4	4,4	-0,1	-1,5%
Moldova	4,8	4,9	0,0	-0,7%	4,1	3,9	0,1	3,7%
Libya	4,6	4,0	0,5	13,6%	4,3	3,6	0,7	19,3%



AREAS



ECAC stands for European Civil Aviation Conference



This report is provided solely to EBAA Members for information purposes only and no representation, warranties or other assurances, express or implied, are given as to the quality, accuracy, or completeness of the information contained in, or provided in connection with the report

Recipients of this report must determine for themselves whether any matters referred to are suitable for their purposes

Neither EBAA nor any of their affiliates, agents, partners, representatives, consultants or any other company, firm or organisation involved in producing this report, nor any of their successors or assign or any employees, officer or director of any of them shall have any liability with respect to the use or reliance on the report by any person, irrespective of any negligence, omission or default, on the part of the foregoing persons

Any reproduction or publication of this report, in whole or in part, is strictly forbidden without the written consent of the EBAA