



BUSINESS AVIATION
TRAFFIC TRACKER EUROPE

May 2019



DEPARTURES, ARRIVALS, INTERNALS AND OVERFLIGHTS (DAIO) REPORT

TOTAL FLIGHTS

Business Aviation (Single European Sky Area)

Month	Arrival			Departure			Internal			Overflight			Previous Year	Current Year	Growth
	Previous Year	Current Year	Growth	Previous Year	Current Year	Growth	Previous Year	Current Year	Growth	Previous Year	Current Year	Growth			
Jun 2018	5,107	5,324	4.2%	4,829	5,079	5.2%	59,565	61,702	3.6%	760	931	22.5%	70,261	73,036	3.9%
Jul 2018	5,174	5,575	7.8%	5,190	5,640	8.7%	63,580	64,217	1.0%	740	914	23.5%	74,684	76,346	2.2%
Aug 2018	4,864	4,921	1.2%	4,952	4,943	-0.2%	55,235	55,283	0.1%	770	795	3.2%	65,821	65,942	0.2%
Sep 2018	4,791	4,682	-2.3%	4,697	4,602	-2.0%	56,325	56,065	-0.5%	803	784	-2.4%	66,616	66,133	-0.7%
Oct 2018	4,501	4,494	-0.2%	4,618	4,635	0.4%	50,124	50,038	-0.2%	915	978	6.9%	60,158	60,145	0.0%
Nov 2018	4,077	3,921	-3.8%	3,962	3,843	-3.0%	44,261	42,664	-3.6%	658	641	-2.6%	52,958	51,069	-3.6%
Dec 2018	3,675	3,534	-3.8%	3,783	3,707	-2.0%	38,022	37,067	-2.5%	693	675	-2.6%	46,173	44,983	-2.6%
Jan 2019	3,934	3,726	-5.3%	3,737	3,495	-6.5%	38,454	37,593	-2.2%	582	603	3.6%	46,707	45,417	-2.8%
Feb 2019	3,441	3,329	-3.3%	3,432	3,286	-4.3%	40,085	39,108	-2.4%	597	545	-8.7%	47,555	46,268	-2.7%
Mar 2019	4,039	3,925	-2.8%	4,050	3,900	-3.7%	46,362	44,470	-4.1%	714	734	2.8%	55,165	53,029	-3.9%
Apr 2019	4,152	3,966	-4.5%	3,886	3,905	0.5%	46,315	43,397	-6.3%	760	826	8.7%	55,113	52,094	-5.5%
May 2019	4,580	4,395	-4.0%	4,477	4,141	-7.5%	54,702	52,899	-3.3%	833	767	-7.9%	64,592	62,202	-3.7%
Grand Total	52,335	51,792	-1.0%	51,613	51,176	-0.8%	593,030	584,503	-1.4%	8,825	9,193	4.2%	705,803	696,664	-1.3%





STATES – May 2019 AVERAGE DAILY FLIGHTS

STATE	MONTH CURRENT YEAR	MONTH GROWTH	YTD CURRENT YEAR	YTD GROWTH
ECAC	2,055.6	-3.9%	1,759.3	-4.1%
ESRA08	2,029.1	-4.1%	1,737.8	-4.2%
SES-RP2	1,993.7	-3.8%	1,702.4	-4.0%
EU28	1,935.0	-4.2%	1,647.0	-4.1%
FABEC	1,316.6	-5.2%	1,146.2	-5.0%
BLUE MED FAB	531.5	-6.0%	381.4	-4.3%
UK-Ireland FAB	471.7	-6.0%	404.1	-4.5%
FAB CE	373.0	-2.6%	321.8	-2.3%
South West FAB	275.1	-0.6%	208.9	-1.9%
NEFAB	142.6	2.2%	127.1	-1.3%
DK-SE FAB	135.1	-5.5%	121.3	-5.3%
Baltic FAB	119.7	-4.7%	108.1	-6.2%
Danube FAB	86.4	-0.6%	74.8	-1.0%



(AIRPORTS) May 2019 AVERAGE DAILY DEPARTURES

Business Aviation

RANK	ICAO CODE	NAME	MONTH CURRENT YEAR	MONTH GROWTH	YTD CURRENT YEAR	YTD GROWTH
1	LFPB	PARIS LE BOURGET	69.7	-9.2%	61.5	-9.9%
2	LFMN	NICE	54.6	-15.0%	34.6	-10.5%
3	LSGG	GENEVE COINTRIN	44.9	-8.2%	39.1	-11.2%
4	EGGW	LONDON/LUTON	41.3	-4.9%	34.1	-8.2%
5	EGLF	FARNBOROUGH CIV	40.9	0.0%	33.8	-3.0%
6	LSZH	ZURICH	29.3	-7.6%	28.0	-10.2%
7	LIML	MILANO LINATE	28.6	-3.3%	23.5	-4.5%
8	LIRA	ROMA CIAMPINO	23.5	-7.1%	16.8	-13.8%
9 	EGKB	BIGGIN HILL	23.0	-3.6%	19.4	-1.1%
10 	LOWW	WIEN SCHWECHAT	22.2	3.9%	18.2	-3.6%



FLOWS – May 2019 AVERAGE DAILY FLIGHTS

Business Aviation

ORIGIN	DESTINATION	MONTH CURRENT YEAR	MONTH GROWTH	YTD CURRENT YEAR	YTD GROWTH
France	France	163.0	-4.9%	145.8	-3.9%
Germany	Germany	120.7	-1.7%	112.5	-5.7%
UK	UK	112.9	-2.6%	101.6	-2.4%
Italy	Italy	72.9	1.4%	50.2	-1.6%
Norway	Norway	52.7	5.5%	49.2	1.0%
Spain	Spain	50.5	7.5%	36.4	1.9%
France	UK	33.9	-14.9%	29.1	-6.7%
UK	France	33.8	-17.4%	28.7	-6.9%
Sweden	Sweden	33.5	-5.7%	33.2	-7.7%
Switzerland	France	25.9	-14.0%	23.3	-10.9%



TRAFFIC PER STATE – May 2019

AVERAGE DAILY FLIGHTS – PART 1

STATE	MONTH CURRENT YEAR	MONTH PREVIOUS YEAR	MONTH CHANGE	MONTH GROWTH	YTD CURRENT YEAR	YTD PREVIOUS YEAR	YTD CHANGE	YTD GROWTH
ECAC	2,055.6	2,137.9	-82.3	-3.9%	1,759.3	1,835.2	-75.9	-4.1%
ESRA08	2,029.1	2,116.7	-87.6	-4.1%	1,737.8	1,814.1	-76.3	-4.2%
ESRA02	2,007.8	2,095.5	-87.8	-4.2%	1,720.9	1,796.2	-75.3	-4.2%
SES-SJU	2,006.5	2,083.6	-77.1	-3.7%	1,715.3	1,782.3	-67.0	-3.8%
SES-RP2	1,993.7	2,073.0	-79.3	-3.8%	1,702.4	1,772.6	-70.2	-4.0%
EU28	1,935.0	2,019.7	-84.7	-4.2%	1,647.0	1,717.8	-70.8	-4.1%
EU27	1,930.2	2,014.8	-84.6	-4.2%	1,643.6	1,714.8	-71.2	-4.2%
FABEC	1,316.6	1,388.4	-71.8	-5.2%	1,146.2	1,207.0	-60.8	-5.0%
France	813.8	874.8	-61.0	-7.0%	682.8	722.4	-39.6	-5.5%
Germany	559.8	596.9	-37.1	-6.2%	517.7	548.7	-31.1	-5.7%
BLUE MED FAB	531.5	565.2	-33.7	-6.0%	381.4	398.6	-17.2	-4.3%
UK-Ireland FAB	471.7	501.6	-29.9	-6.0%	404.1	423.1	-19.0	-4.5%
UK	462.3	494.2	-31.9	-6.5%	398.0	417.3	-19.3	-4.6%
Italy	449.5	476.9	-27.4	-5.7%	318.4	332.8	-14.4	-4.3%
FAB CE	373.0	383.1	-10.1	-2.6%	321.8	329.5	-7.7	-2.3%
Switzerland	347.4	368.5	-21.2	-5.7%	327.2	347.8	-20.5	-5.9%
South West FAB	275.1	276.8	-1.8	-0.6%	208.9	212.9	-4.0	-1.9%
Spain	261.6	265.3	-3.7	-1.4%	196.1	201.1	-5.0	-2.5%
Austria	234.6	241.5	-6.8	-2.8%	208.3	216.5	-8.2	-3.8%



TRAFFIC PER STATE – May 2019

AVERAGE DAILY FLIGHTS – PART 2

STATE	MONTH CURRENT YEAR	MONTH PREVIOUS YEAR	MONTH CHANGE	MONTH GROWTH	YTD CURRENT YEAR	YTD PREVIOUS YEAR	YTD CHANGE	YTD GROWTH
Belgium/Luxembourg	196.5	215.0	-18.5	-8.6%	177.1	192.2	-15.1	-7.9%
Netherlands	153.0	163.3	-10.3	-6.3%	130.2	140.9	-10.6	-7.6%
DK-SE FAB	135.1	142.9	-7.9	-5.5%	121.3	128.1	-6.7	-5.3%
NEFAB	142.6	139.6	3.0	2.2%	127.1	128.7	-1.6	-1.3%
Baltic FAB	119.7	125.7	-5.9	-4.7%	108.1	115.3	-7.2	-6.2%
Czech Republic	116.1	119.4	-3.3	-2.8%	106.3	109.3	-2.9	-2.7%
Turkey	107.9	116.6	-8.7	-7.5%	98.3	106.3	-8.0	-7.5%
Poland	108.8	115.5	-6.7	-5.8%	98.7	105.3	-6.6	-6.3%
Sweden	98.9	107.8	-8.9	-8.3%	92.4	98.8	-6.4	-6.5%
Greece	99.4	103.5	-4.0	-3.9%	73.4	75.4	-2.0	-2.6%
Croatia	94.8	97.3	-2.5	-2.6%	70.1	70.3	-0.2	-0.3%
Ireland	88.4	87.9	0.5	0.6%	69.3	69.8	-0.6	-0.8%
Danube FAB	86.4	86.9	-0.5	-0.6%	74.8	75.5	-0.7	-1.0%
Hungary	78.6	82.4	-3.8	-4.6%	68.0	68.7	-0.6	-0.9%
Serbia&Montenegro	81.0	80.5	0.5	0.6%	64.8	64.2	0.6	1.0%
Denmark	72.9	77.0	-4.1	-5.4%	61.6	64.5	-3.0	-4.6%
Norway	81.8	76.6	5.1	6.7%	73.7	72.2	1.6	2.2%
Slovakia	65.2	69.5	-4.4	-6.3%	55.9	58.8	-2.8	-4.8%
Bulgaria	58.8	65.6	-6.8	-10.4%	54.6	57.6	-3.1	-5.3%



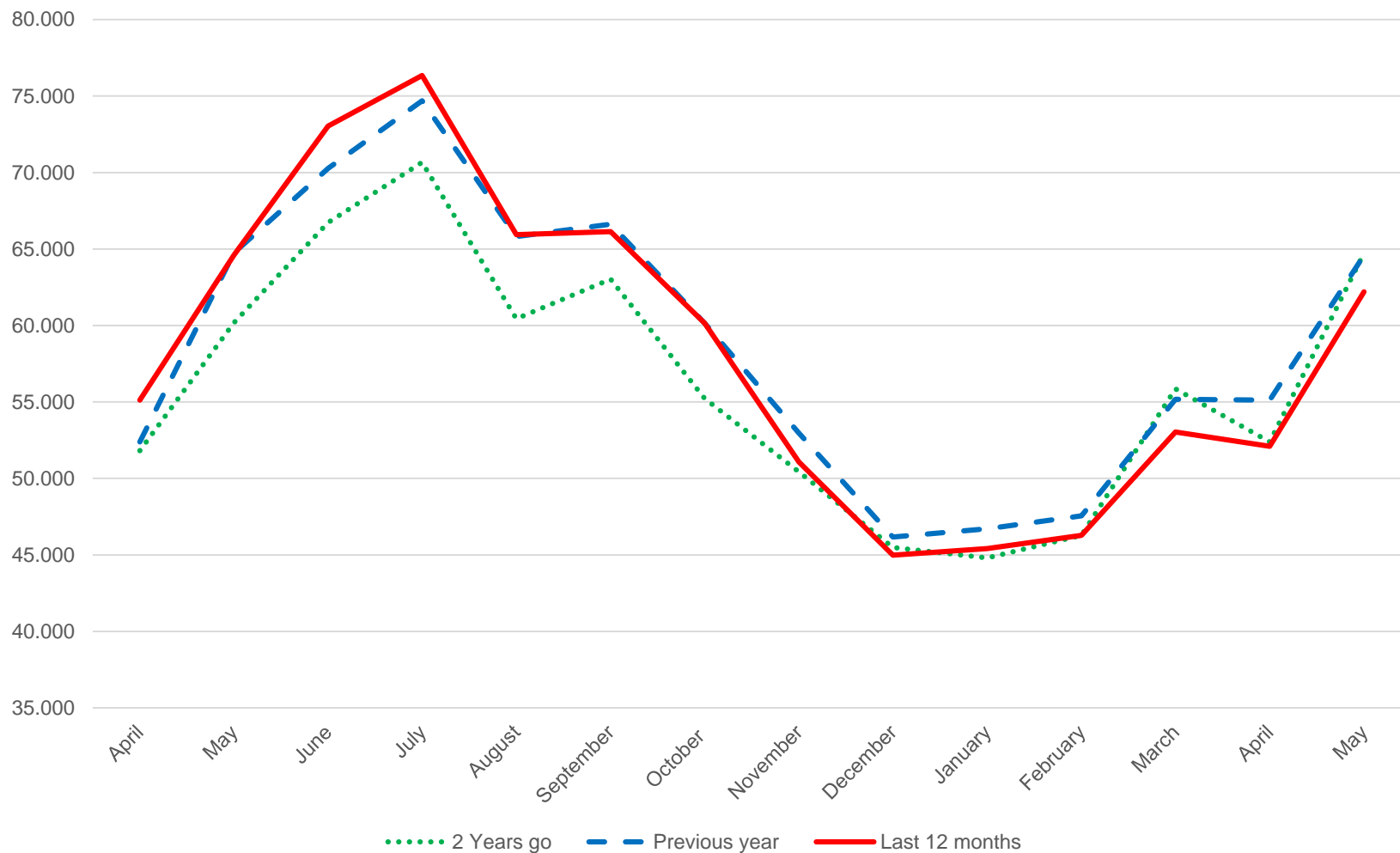
TRAFFIC PER STATE – May 2019

AVERAGE DAILY FLIGHTS - PART 3

STATE	MONTH CURRENT YEAR	MONTH PREVIOUS YEAR	MONTH CHANGE	MONTH GROWTH	YTD CURRENT YEAR	YTD PREVIOUS YEAR	YTD CHANGE	YTD GROWTH
Slovenia	64.8	64.7	0.1	0.1%	49.9	51.6	-1.7	-3.2%
Romania	58.1	56.5	1.5	2.7%	50.6	49.5	1.1	2.1%
Belarus	53.8	55.6	-1.8	-3.3%	50.7	53.9	-3.2	-5.9%
Cyprus	50.3	50.9	-0.6	-1.3%	43.0	44.6	-1.6	-3.6%
Ukraine	40.3	50.6	-10.4	-20.5%	32.4	34.5	-2.1	-6.1%
Bosnia-Herzegovina	48.3	46.9	1.4	2.9%	36.9	37.1	-0.2	-0.6%
Lisbon FIR	48.8	45.7	3.1	6.8%	40.1	39.2	1.0	2.5%
Morocco	36.2	38.5	-2.4	-6.1%	41.9	39.7	2.2	5.6%
Finland	38.8	38.4	0.4	0.9%	35.8	37.0	-1.2	-3.2%
Lithuania	30.3	31.4	-1.1	-3.4%	26.3	30.1	-3.7	-12.4%
Latvia	28.1	29.1	-1.0	-3.5%	23.4	24.9	-1.4	-5.8%
Egypt	25.7	26.2	-0.5	-1.7%	31.0	28.9	2.1	7.4%
Israel	25.5	24.4	1.2	4.8%	21.2	22.4	-1.2	-5.6%
Estonia	19.3	23.8	-4.5	-18.8%	16.0	17.5	-1.5	-8.6%
North Macedonia	22.0	22.5	-0.5	-2.3%	16.2	16.7	-0.5	-3.2%
Albania	22.9	21.8	1.1	4.9%	16.7	16.4	0.3	2.1%
Iceland	19.5	21.0	-1.5	-7.1%	16.2	17.4	-1.2	-6.9%
Malta	17.3	20.3	-3.0	-14.9%	17.1	17.0	0.2	1.1%
Santa Maria FIR	14.7	15.2	-0.5	-3.2%	15.8	15.4	0.4	2.8%
Canary Islands	15.3	14.6	0.7	4.6%	17.3	18.5	-1.2	-6.5%
Azerbaijan	16.0	11.7	4.3	36.3%	13.7	13.4	0.3	1.9%
Tunisia	7.0	9.3	-2.3	-24.3%	7.8	8.8	-1.0	-11.8%
Georgia	9.7	8.7	0.9	10.7%	8.0	9.1	-1.1	-11.9%
Moldova	6.8	7.1	-0.2	-3.2%	5.6	4.9	0.7	14.6%
Libya	3.6	6.2	-2.6	-41.7%	4.6	4.9	-0.3	-6.1%
Armenia	4.7	3.5	1.2	35.2%	3.8	4.7	-0.8	-17.4%



DEPARTURES, ARRIVALS, INTERNALS AND OVERFLIGHTS (DAIO) REPORT BUSINESS AVIATION





This report is provided solely to EBAA Members for information purposes only and no representation, warranties or other assurances, express or implied, are given as to the quality, accuracy, or completeness of the information contained in, or provided in connection with the report

Recipients of this report must determine for themselves whether any matters referred to are suitable for their purposes

Neither EBAA nor any of their affiliates, agents, partners, representatives, consultants or any other company, firm or organisation involved in producing this report, nor any of their successors or assign or any employees, officer or director of any of them shall have any liability with respect to the use or reliance on the report by any person, irrespective of any negligence, omission or default, on the part of the foregoing persons

Any reproduction or publication of this report, in whole or in part, is strictly forbidden without the written consent of the EBAA