



BUSINESS AVIATION
TRAFFIC TRACKER EUROPE

June 2019



DEPARTURES, ARRIVALS, INTERNALS AND OVERFLIGHTS (DAIO) REPORT

TOTAL FLIGHTS

Business Aviation (Single European Sky Area)

| Month | Arrival | | | Departure | | | Internal | | | Overflight | | | Previous Year | Current Year | Growth |
|--------------------|---------------|---------------|--------------|---------------|---------------|--------------|----------------|----------------|--------------|---------------|--------------|-------------|----------------|----------------|--------------|
| | Previous Year | Current Year | Growth | Previous Year | Current Year | Growth | Previous Year | Current Year | Growth | Previous Year | Current Year | Growth | | | |
| Jul 2018 | 5,174 | 5,575 | 7.8% | 5,190 | 5,640 | 8.7% | 63,580 | 64,217 | 1.0% | 740 | 914 | 23.5% | 74,684 | 76,346 | 2.2% |
| Aug 2018 | 4,864 | 4,921 | 1.2% | 4,952 | 4,943 | -0.2% | 55,235 | 55,283 | 0.1% | 770 | 795 | 3.2% | 65,821 | 65,942 | 0.2% |
| Sep 2018 | 4,791 | 4,682 | -2.3% | 4,697 | 4,602 | -2.0% | 56,325 | 56,065 | -0.5% | 803 | 784 | -2.4% | 66,616 | 66,133 | -0.7% |
| Oct 2018 | 4,501 | 4,494 | -0.2% | 4,618 | 4,635 | 0.4% | 50,124 | 50,038 | -0.2% | 915 | 978 | 6.9% | 60,158 | 60,145 | 0.0% |
| Nov 2018 | 4,077 | 3,921 | -3.8% | 3,962 | 3,843 | -3.0% | 44,261 | 42,664 | -3.6% | 658 | 641 | -2.6% | 52,958 | 51,069 | -3.6% |
| Dec 2018 | 3,675 | 3,534 | -3.8% | 3,783 | 3,707 | -2.0% | 38,022 | 37,067 | -2.5% | 693 | 675 | -2.6% | 46,173 | 44,983 | -2.6% |
| Jan 2019 | 3,934 | 3,726 | -5.3% | 3,737 | 3,495 | -6.5% | 38,454 | 37,593 | -2.2% | 582 | 603 | 3.6% | 46,707 | 45,417 | -2.8% |
| Feb 2019 | 3,441 | 3,329 | -3.3% | 3,432 | 3,286 | -4.3% | 40,085 | 39,108 | -2.4% | 597 | 545 | -8.7% | 47,555 | 46,268 | -2.7% |
| Mar 2019 | 4,039 | 3,925 | -2.8% | 4,050 | 3,900 | -3.7% | 46,362 | 44,470 | -4.1% | 714 | 734 | 2.8% | 55,165 | 53,029 | -3.9% |
| Apr 2019 | 4,152 | 3,966 | -4.5% | 3,886 | 3,905 | 0.5% | 46,315 | 43,397 | -6.3% | 760 | 826 | 8.7% | 55,113 | 52,094 | -5.5% |
| May 2019 | 4,580 | 4,395 | -4.0% | 4,477 | 4,141 | -7.5% | 54,702 | 52,899 | -3.3% | 833 | 767 | -7.9% | 64,592 | 62,202 | -3.7% |
| Jun 2019 | 5,324 | 5,317 | -0.1% | 5,079 | 5,133 | 1.1% | 61,702 | 60,156 | -2.5% | 931 | 857 | -7.9% | 73,036 | 71,463 | -2.2% |
| Grand Total | 52,552 | 51,785 | -1.5% | 51,863 | 51,230 | -1.2% | 595,167 | 582,957 | -2.1% | 8,996 | 9,119 | 1.4% | 708,578 | 695,091 | -1.9% |



STATES – June 2019





AVERAGE DAILY FLIGHTS

| STATE | MONTH CURRENT YEAR | MONTH GROWTH | YTD CURRENT YEAR | YTD GROWTH |
|----------------|--------------------|--------------|------------------|------------|
| ECAC | 2,436.9 | -2.4% | 1,871.6 | -3.8% |
| ESRA08 | 2,413.0 | -2.6% | 1,849.7 | -3.9% |
| SES-RP2 | 2,368.8 | -2.3% | 1,812.8 | -3.6% |
| EU28 | 2,309.8 | -2.3% | 1,756.8 | -3.7% |
| FABEC | 1,556.3 | -3.0% | 1,214.2 | -4.6% |
| BLUE MED FAB | 709.7 | 1.6% | 435.8 | -2.8% |
| UK-Ireland FAB | 549.8 | -3.1% | 428.3 | -4.2% |
| FAB CE | 443.1 | -4.2% | 341.9 | -2.8% |
| South West FAB | 333.5 | 5.1% | 229.5 | -0.3% |
| NEFAB | 171.1 | 4.6% | 134.4 | -0.1% |
| DK-SE FAB | 161.3 | -2.4% | 127.9 | -4.7% |
| Baltic FAB | 134.6 | -14.0% | 112.5 | -7.9% |
| Danube FAB | 94.7 | 1.7% | 78.1 | -0.4% |



(AIRPORTS) June 2019 AVERAGE DAILY DEPARTURES

Business Aviation

| RANK | ICAO CODE | NAME | MONTH CURRENT YEAR | MONTH GROWTH | YTD CURRENT YEAR | YTD GROWTH |
|--|-----------|------------------|--------------------|--------------|------------------|------------|
| 1 | LFPB | PARIS LE BOURGET | 88.4 | -2.6% | 65.9 | -8.4% |
| 2 | LFMN | NICE | 62.2 | 1.4% | 39.2 | -7.7% |
| 3  | EGLF | FARNBOROUGH CIV | 49.6 | 10.4% | 36.4 | -0.3% |
| 4  | LSGG | GENEVE COINTRIN | 47.8 | -10.3% | 40.5 | -11.0% |
| 5 | EGGW | LONDON/LUTON | 43.1 | 1.3% | 35.6 | -6.5% |
| 6 | LSZH | ZURICH | 35.0 | -2.1% | 29.2 | -8.7% |
| 7 | LIML | MILANO LINATE | 33.9 | -0.5% | 25.2 | -3.7% |
| 8 | LEIB | IBIZA | 30.7 | -0.8% | 9.8 | -13.7% |
| 9  | LEMD | MADRID BARAJAS | 27.5 | 28.7% | 17.4 | 5.8% |
| 10  | LIRA | ROMA CIAMPINO | 26.5 | -4.9% | 18.4 | -11.8% |



FLOWS – June 2019 AVERAGE DAILY FLIGHTS

Business Aviation

| ORIGIN | DESTINATION | MONTH CURRENT YEAR | MONTH GROWTH | YTD CURRENT YEAR | YTD GROWTH |
|-------------|-------------|--------------------|--------------|------------------|------------|
| France | France | 195.7 | -3.7% | 154.1 | -3.8% |
| Germany | Germany | 124.9 | -7.7% | 114.5 | -6.1% |
| UK | UK | 117.3 | -10.2% | 104.2 | -4.0% |
| Italy | Italy | 93.5 | 1.6% | 57.4 | -0.8% |
| Spain | Spain | 60.9 | -0.8% | 40.4 | 1.2% |
| Norway | Norway | 54.3 | 0.5% | 50.0 | 0.9% |
| UK | France | 42.0 | -3.8% | 30.9 | -6.2% |
| France | UK | 41.4 | -2.8% | 31.1 | -5.9% |
| France | Switzerland | 35.0 | -1.3% | 25.7 | -8.4% |
| Switzerland | France | 34.0 | -2.9% | 25.1 | -9.2% |



TRAFFIC PER STATE – June 2019

AVERAGE DAILY FLIGHTS – PART 1

| STATE | MONTH CURRENT YEAR | MONTH PREVIOUS YEAR | MONTH CHANGE | MONTH GROWTH | YTD CURRENT YEAR | YTD PREVIOUS YEAR | YTD CHANGE | YTD GROWTH |
|----------------|--------------------|---------------------|--------------|--------------|------------------|-------------------|------------|------------|
| ECAC | 2,436.9 | 2,496.9 | -60.1 | -2.4% | 1,871.6 | 1,944.8 | -73.3 | -3.8% |
| ESRA08 | 2,413.0 | 2,476.4 | -63.5 | -2.6% | 1,849.7 | 1,923.9 | -74.2 | -3.9% |
| ESRA02 | 2,389.5 | 2,452.2 | -62.7 | -2.6% | 1,831.7 | 1,904.9 | -73.2 | -3.8% |
| SES-SJU | 2,382.1 | 2,434.5 | -52.4 | -2.2% | 1,825.8 | 1,890.4 | -64.6 | -3.4% |
| SES-RP2 | 2,368.8 | 2,423.7 | -54.9 | -2.3% | 1,812.8 | 1,880.5 | -67.7 | -3.6% |
| EU28 | 2,309.8 | 2,363.3 | -53.5 | -2.3% | 1,756.8 | 1,824.8 | -68.0 | -3.7% |
| EU27 | 2,303.0 | 2,357.0 | -54.0 | -2.3% | 1,752.9 | 1,821.2 | -68.4 | -3.8% |
| FABEC | 1,556.3 | 1,603.7 | -47.4 | -3.0% | 1,214.2 | 1,272.8 | -58.6 | -4.6% |
| France | 1,017.6 | 1,008.9 | 8.7 | 0.9% | 738.3 | 769.9 | -31.6 | -4.1% |
| BLUE MED FAB | 709.7 | 698.6 | 11.0 | 1.6% | 435.8 | 448.4 | -12.5 | -2.8% |
| Germany | 630.9 | 685.7 | -54.8 | -8.0% | 536.5 | 571.4 | -35.0 | -6.1% |
| Italy | 587.0 | 576.8 | 10.1 | 1.8% | 362.9 | 373.2 | -10.3 | -2.8% |
| UK-Ireland FAB | 549.8 | 567.3 | -17.4 | -3.1% | 428.3 | 447.0 | -18.7 | -4.2% |
| UK | 537.8 | 556.3 | -18.5 | -3.3% | 421.2 | 440.3 | -19.1 | -4.3% |
| FAB CE | 443.1 | 462.8 | -19.6 | -4.2% | 341.9 | 351.6 | -9.7 | -2.8% |
| Switzerland | 420.7 | 429.9 | -9.2 | -2.1% | 342.7 | 361.4 | -18.6 | -5.2% |
| South West FAB | 333.5 | 317.4 | 16.1 | 5.1% | 229.5 | 230.2 | -0.7 | -0.3% |
| Spain | 321.3 | 304.3 | 17.0 | 5.6% | 216.8 | 218.2 | -1.4 | -0.6% |
| Austria | 284.4 | 293.5 | -9.1 | -3.1% | 220.9 | 229.2 | -8.4 | -3.7% |



TRAFFIC PER STATE – June 2019

AVERAGE DAILY FLIGHTS – PART 2

| STATE | MONTH CURRENT YEAR | MONTH PREVIOUS YEAR | MONTH CHANGE | MONTH GROWTH | YTD CURRENT YEAR | YTD PREVIOUS YEAR | YTD CHANGE | YTD GROWTH |
|--------------------|--------------------|---------------------|--------------|--------------|------------------|-------------------|------------|------------|
| Belgium/Luxembourg | 230.9 | 239.0 | -8.1 | -3.4% | 186.0 | 200.0 | -14.0 | -7.0% |
| Netherlands | 169.6 | 182.3 | -12.7 | -6.9% | 136.8 | 147.7 | -11.0 | -7.4% |
| DK-SE FAB | 161.3 | 165.2 | -3.9 | -2.4% | 127.9 | 134.2 | -6.3 | -4.7% |
| NEFAB | 171.1 | 163.6 | 7.5 | 4.6% | 134.4 | 134.5 | -0.1 | -0.1% |
| Greece | 171.7 | 158.5 | 13.2 | 8.3% | 89.7 | 89.2 | 0.5 | 0.6% |
| Baltic FAB | 134.6 | 156.5 | -21.8 | -14.0% | 112.5 | 122.1 | -9.6 | -7.9% |
| Czech Republic | 131.8 | 144.8 | -13.1 | -9.0% | 110.6 | 115.2 | -4.6 | -4.0% |
| Poland | 122.6 | 143.4 | -20.9 | -14.5% | 102.6 | 111.6 | -9.0 | -8.1% |
| Turkey | 134.1 | 141.5 | -7.4 | -5.2% | 104.2 | 112.1 | -7.9 | -7.0% |
| Croatia | 133.0 | 137.3 | -4.3 | -3.2% | 80.5 | 81.4 | -0.9 | -1.1% |
| Sweden | 120.7 | 124.8 | -4.2 | -3.3% | 97.1 | 103.1 | -6.0 | -5.9% |
| Serbia&Montenegro | 105.8 | 103.8 | 2.0 | 1.9% | 71.6 | 70.8 | 0.8 | 1.2% |
| Ireland | 108.1 | 102.7 | 5.4 | 5.3% | 75.7 | 75.3 | 0.4 | 0.6% |
| Danube FAB | 94.7 | 93.2 | 1.6 | 1.7% | 78.1 | 78.4 | -0.3 | -0.4% |
| Norway | 92.2 | 91.7 | 0.4 | 0.5% | 76.8 | 75.4 | 1.4 | 1.8% |
| Hungary | 89.8 | 90.9 | -1.1 | -1.2% | 71.6 | 72.4 | -0.7 | -1.0% |
| Denmark | 88.0 | 89.5 | -1.5 | -1.6% | 66.0 | 68.7 | -2.7 | -4.0% |
| Slovenia | 85.2 | 84.8 | 0.4 | 0.5% | 55.8 | 57.1 | -1.3 | -2.3% |
| Slovakia | 73.5 | 79.6 | -6.1 | -7.7% | 58.8 | 62.2 | -3.4 | -5.4% |



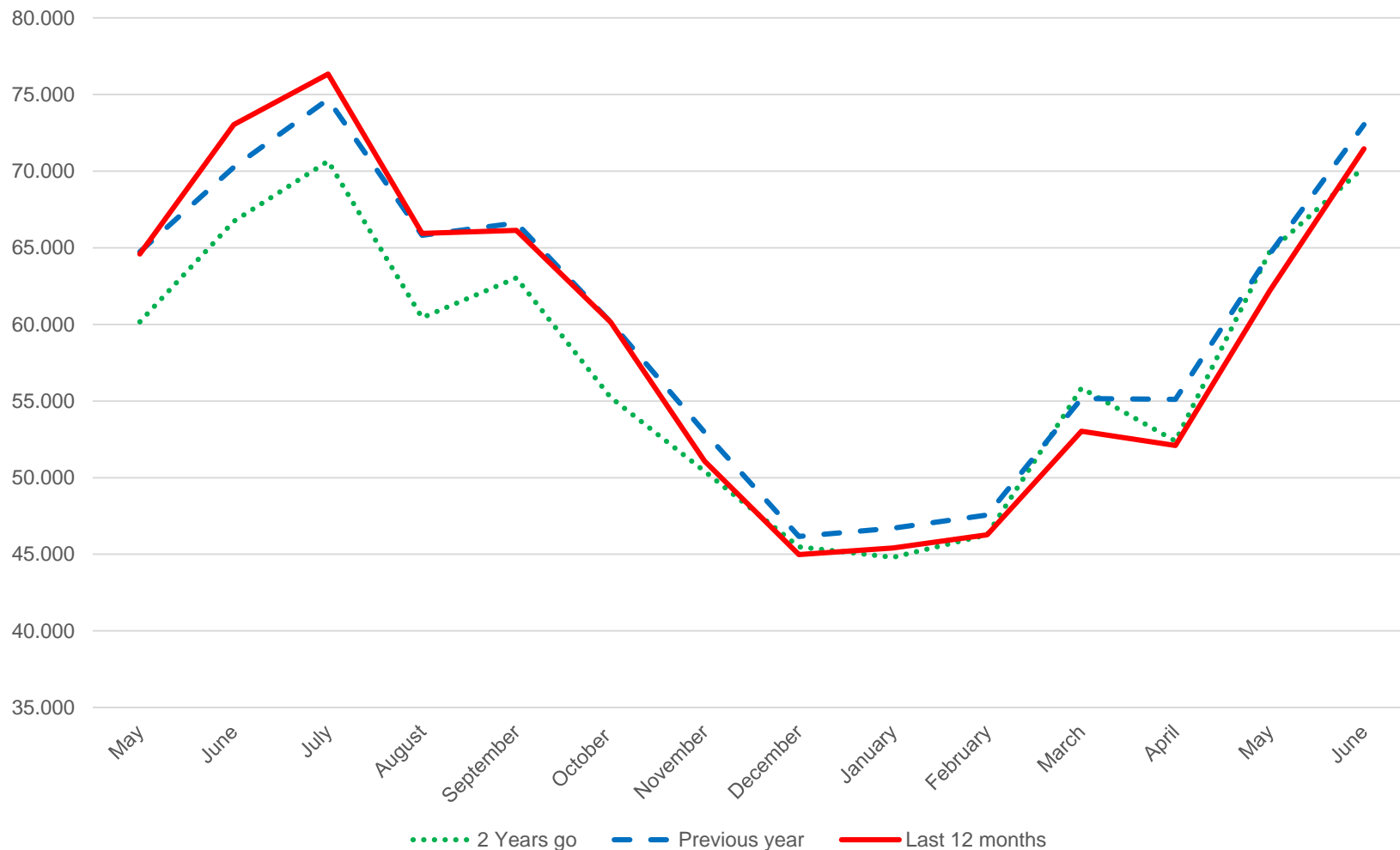
TRAFFIC PER STATE – June 2019

AVERAGE DAILY FLIGHTS - PART 3

| STATE | MONTH CURRENT YEAR | MONTH PREVIOUS YEAR | MONTH CHANGE | MONTH GROWTH | YTD CURRENT YEAR | YTD PREVIOUS YEAR | YTD CHANGE | YTD GROWTH |
|--------------------|--------------------|---------------------|--------------|--------------|------------------|-------------------|------------|------------|
| Bulgaria | 68.5 | 72.1 | -3.6 | -5.0% | 56.9 | 60.0 | -3.2 | -5.3% |
| Belarus | 59.2 | 71.6 | -12.4 | -17.3% | 52.1 | 56.8 | -4.7 | -8.3% |
| Bosnia-Herzegovina | 61.8 | 62.0 | -0.1 | -0.2% | 41.0 | 41.3 | -0.3 | -0.6% |
| Romania | 64.8 | 60.3 | 4.5 | 7.4% | 53.0 | 51.3 | 1.6 | 3.2% |
| Cyprus | 58.7 | 55.4 | 3.3 | 6.0% | 45.6 | 46.4 | -0.8 | -1.7% |
| Lisbon FIR | 49.5 | 49.9 | -0.4 | -0.8% | 41.7 | 41.0 | 0.7 | 1.8% |
| Finland | 45.0 | 44.5 | 0.5 | 1.2% | 37.3 | 38.2 | -0.9 | -2.4% |
| Ukraine | 50.5 | 43.6 | 6.9 | 15.8% | 35.4 | 36.0 | -0.6 | -1.7% |
| Lithuania | 35.3 | 40.0 | -4.7 | -11.8% | 27.8 | 31.7 | -3.9 | -12.3% |
| Albania | 37.3 | 35.3 | 2.1 | 5.9% | 20.1 | 19.5 | 0.6 | 3.2% |
| Latvia | 38.8 | 34.4 | 4.4 | 12.8% | 26.0 | 26.5 | -0.5 | -1.8% |
| North Macedonia | 36.5 | 33.9 | 2.6 | 7.7% | 19.6 | 19.6 | 0.0 | -0.1% |
| Morocco | 38.6 | 33.5 | 5.1 | 15.1% | 41.3 | 38.6 | 2.7 | 6.9% |
| Egypt | 36.5 | 29.7 | 6.8 | 22.9% | 31.9 | 29.0 | 2.9 | 10.0% |
| Iceland | 27.6 | 27.0 | 0.7 | 2.5% | 18.1 | 19.0 | -0.9 | -4.7% |
| Israel | 28.9 | 25.4 | 3.5 | 13.9% | 22.4 | 22.9 | -0.5 | -2.0% |
| Estonia | 31.0 | 25.3 | 5.7 | 22.5% | 18.5 | 18.8 | -0.3 | -1.6% |
| Malta | 18.9 | 21.2 | -2.3 | -11.0% | 17.4 | 17.7 | -0.2 | -1.3% |
| Santa Maria FIR | 16.0 | 15.7 | 0.2 | 1.5% | 15.9 | 15.5 | 0.4 | 2.5% |
| Canary Islands | 14.4 | 14.3 | 0.1 | 0.7% | 16.8 | 17.8 | -1.0 | -5.5% |
| Georgia | 8.4 | 10.6 | -2.2 | -20.8% | 8.1 | 9.4 | -1.3 | -13.6% |
| Azerbaijan | 8.9 | 10.1 | -1.2 | -11.8% | 12.9 | 12.9 | 0.0 | 0.1% |
| Moldova | 8.7 | 9.5 | -0.7 | -7.7% | 6.1 | 5.6 | 0.5 | 8.3% |
| Tunisia | 8.3 | 8.8 | -0.4 | -4.9% | 7.9 | 8.8 | -0.9 | -10.6% |
| Libya | 2.0 | 5.8 | -3.8 | -65.7% | 4.2 | 5.0 | -0.9 | -17.5% |
| Armenia | 4.0 | 3.5 | 0.5 | 15.2% | 3.9 | 4.5 | -0.6 | -13.1% |



DEPARTURES, ARRIVALS, INTERNALS AND OVERFLIGHTS (DAIO) REPORT BUSINESS AVIATION





This report is provided solely to EBAA Members for information purposes only and no representation, warranties or other assurances, express or implied, are given as to the quality, accuracy, or completeness of the information contained in, or provided in connection with the report. Recipients of this report must determine for themselves whether any matters referred to are suitable for their purposes.

Neither EBAA nor any of their affiliates, agents, partners, representatives, consultants or any other company, firm or organisation involved in producing this report, nor any of their successors or assign or any employees, officer or director of any of them shall have any liability with respect to the use or reliance on the report by any person, irrespective of any negligence, omission or default, on the part of the foregoing persons.

Any reproduction or publication of this report, in whole or in part, is strictly forbidden without the written consent of the EBAA.