

BUSINESS AVIATION TRAFFIC TRACKER EUROPE

AUGUST 2023



EUROPEAN BUSINESS AVIATION ASSOCIATION



DEPARTURES, ARRIVALS, INTERNALS AND OVERFLIGHTS (DAIO) REPORT

TOTAL BUSINESS AVIATION FLIGHTS



Business Aviation (ECAC Area)

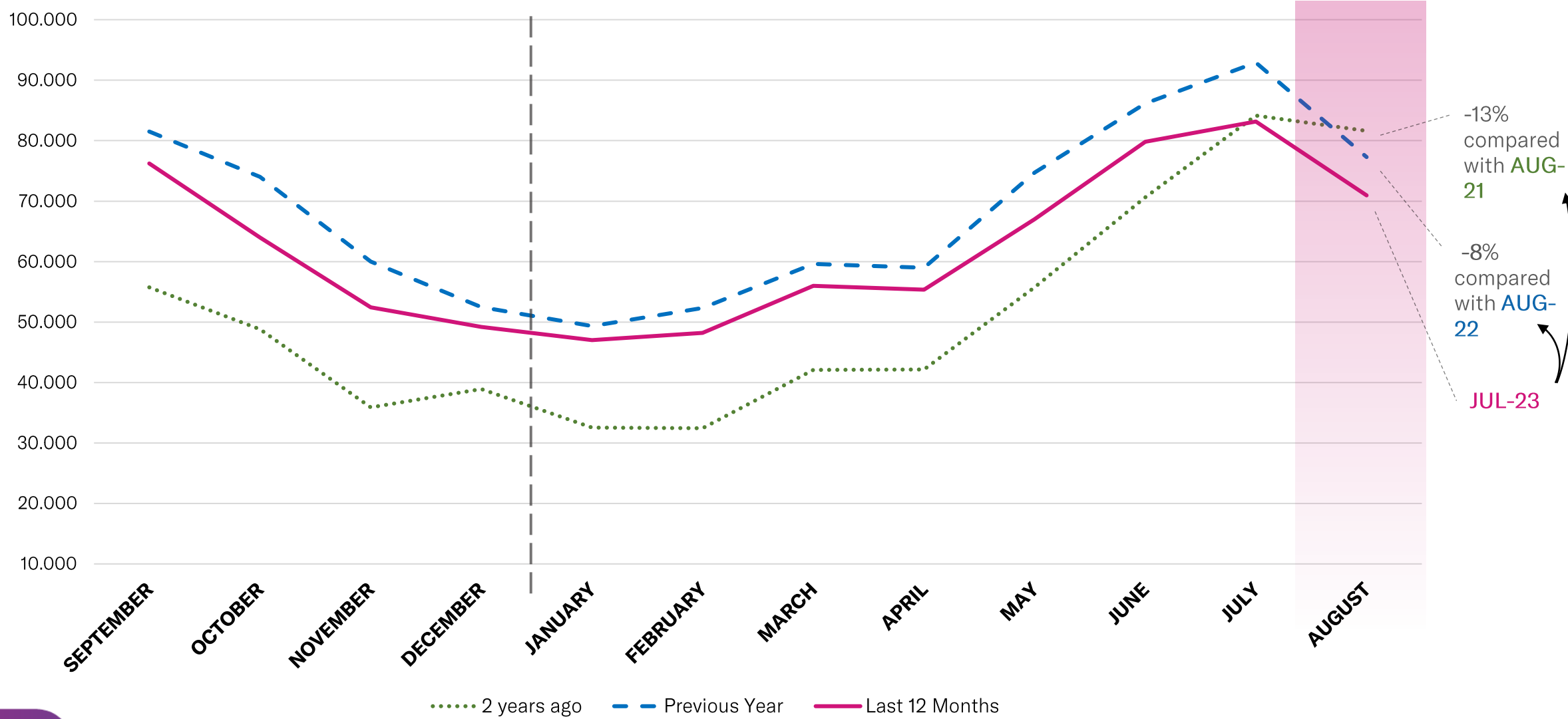
	ARRIVAL			DEPARTURE			INTERNAL			OVERFLIGHT			PREVIOUS YEAR	CURRENT YEAR	GROWTH
	Previous Year	Current Year	Growth	Previous Year	Current Year	Growth	Previous Year	Current Year	Growth	Previous Year	Current Year	Growth			
Sep 2022	4.404	4.028	-8,5%	4.433	3.928	-11,4%	72.273	67.741	-6,3%	389	385	-1,0%	81.499	76.082	-6,6%
Oct 2022	4.623	3.648	-21,1%	4.694	3.807	-18,9%	63.869	55.860	-12,5%	823	503	-38,9%	74.009	63.818	-13,8%
Nov 2022	4.090	3.233	-21,0%	4.100	3.194	-22,1%	50.937	45.443	-10,8%	881	482	-45,3%	60.008	52.352	-12,8%
Dec 2022	3.897	2.998	-23,1%	4.056	3.116	-23,2%	43.747	42.414	-3,0%	756	610	-19,3%	52.456	49.138	-6,3%
Jan 2023	3.785	3.036	-19,8%	3.548	2.825	-20,4%	41.167	40.633	-1,3%	832	462	-44,5%	49.332	46.956	-4,8%
Feb 2023	3.432	2.641	-23,0%	3.241	2.578	-20,5%	45.034	42.543	-5,5%	607	379	-37,6%	52.314	48.141	-8,0%
Mar 2023	3.418	3.314	-3,0%	3.408	3.256	-4,5%	52.131	48.909	-6,2%	654	469	-28,3%	59.611	55.948	-6,1%
Apr 2023	3.161	3.224	2,0%	3.046	3.069	0,8%	52.300	48.589	-7,1%	417	422	1,2%	58.924	55.304	-6,1%
May 2023	3.764	3.608	-4,1%	3.566	3.373	-5,4%	66.767	59.614	-10,7%	450	422	-6,2%	74.547	67.017	-10,1%
Jun 2023	4.306	4.265	-1,0%	4.022	3.921	-2,5%	77.277	71.129	-8,0%	352	332	-5,7%	85.957	79.647	-7,3%
Jul 2023	4.265	3.760	-11,8%	4.291	3.889	-9,4%	83.853	75.177	-10,3%	291	324	11,3%	92.700	83.150	-10,3%
Aug 2023	3.692	3.483	-5,7%	3.741	3.510	-6,2%	69.432	63.694	-8,3%	269	253	-5,9%	77.134	70.940	-8,0%
Grand Total	46.837	41.238	-12,0%	46.146	40.466	-12,3%	718.787	661.746	-7,9%	6.721	5.043	-25,0%	818.491	748.493	-8,6%

EBA TRAFFIC TRACKER - AUGUST 2023

DEPARTURES, ARRIVALS, INTERNALS AND OVERFLIGHTS (DAIO) REPORT

TOTAL BUSINESS AVIATION FLIGHTS

EBAA TRAFFIC TRACKER - AUGUST 2023



-13% compared with **AUG-21**

-8% compared with **AUG-22**

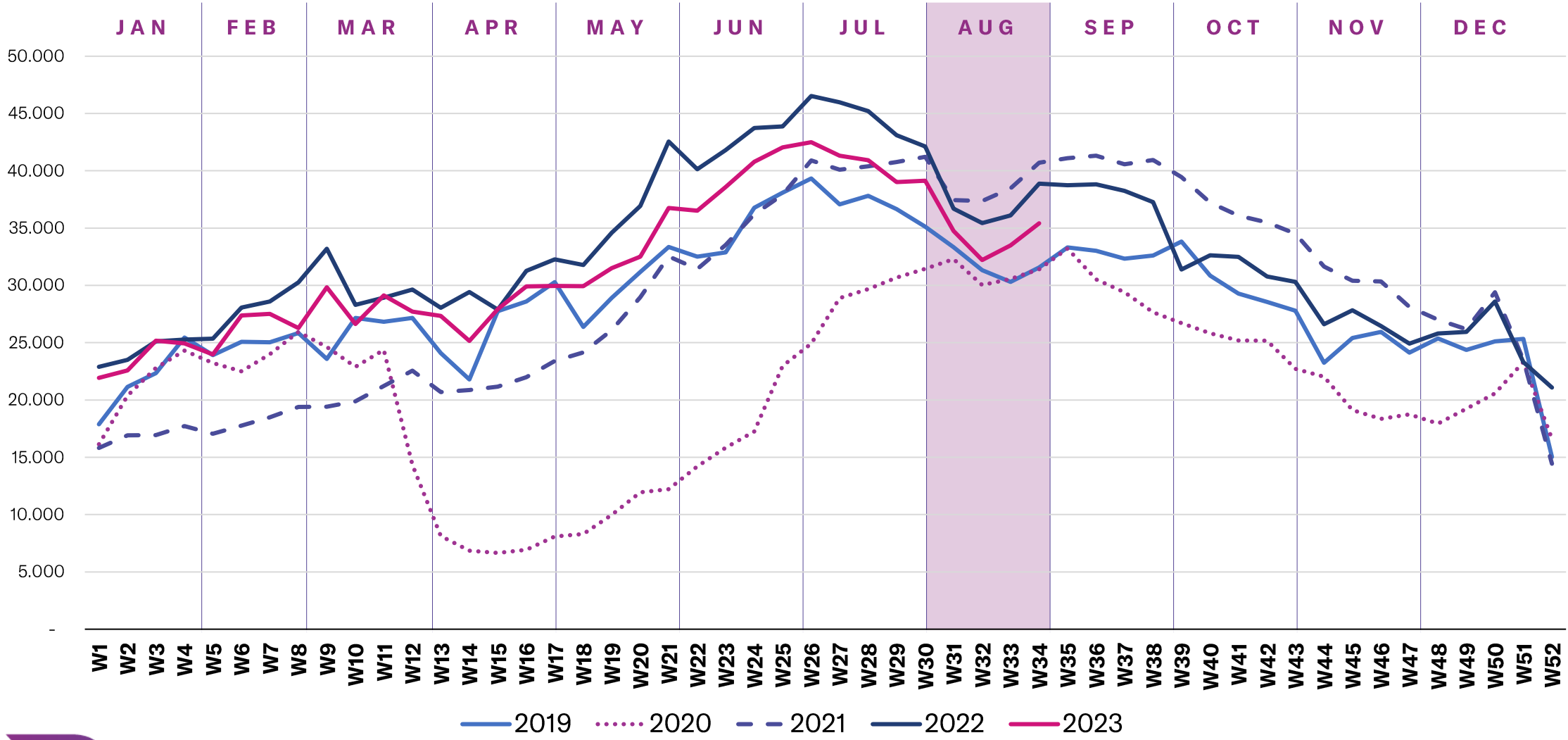
JUL-23



WEEK BY WEEK DETAILS IN EUROPE

BUSINESS AVIATION WEEKLY MOVEMENTS (DEPARTURES + ARRIVALS)

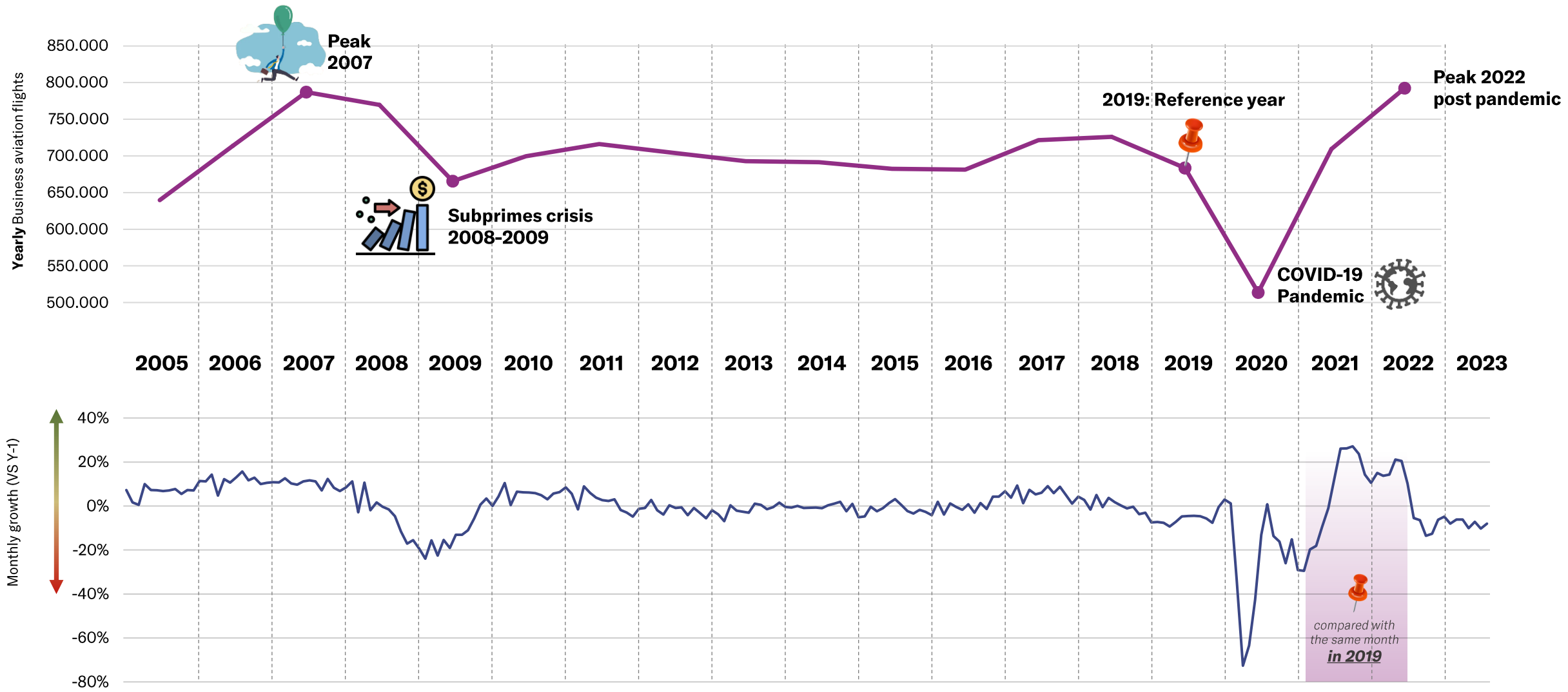
EBAA TRAFFIC TRACKER - AUGUST 2023



BUSINESS AVIATION IN EUROPE : 2005 – NOW

MONTHLY ACTIVITY AND GROWTH

EBAA TRAFFIC TRACKER - AUGUST 2023



EUROPEAN STATES – STATE OF PLAY

« YEAR-TO-DATE » details in Europe (flights from january onwards)



STATE OF PLAY - YTD (from january onwards)

	MONTH CURRENT YEAR	MONTH GROWTH	YTD CURRENT YEAR	YTD GROWTH
FRANCE	22.355	-9%	176.596	-8%
UNITED KINGDOM	18.606	-8%	140.030	-8%
GERMANY	13.730	-12%	118.867	-8%
ITALY	17.427	-3%	107.040	-4%
SPAIN	11.841	-5%	79.372	-8%
SWITZERLAND	8.016	-12%	67.999	-8%
TURKEY	7.368	1%	38.688	8%
GREECE	7.556	-7%	30.759	-6%
SWEDEN	3.607	-8%	28.363	-1%
AUSTRIA	3.573	-15%	28.057	-10%
NORWAY	3.804	-9%	26.958	-8%
NETHERLANDS	2.136	-21%	19.766	-13%
BELGIUM	2.048	-21%	19.017	-11%
POLAND	1.968	2%	15.134	-6%
PORTUGAL	1.746	-14%	14.047	-4%
CZECH REPUBLIC	1.869	-4%	13.797	-3%
IRELAND	1.694	0%	11.534	-3%
CROATIA	2.641	-10%	11.223	-4%
DENMARK	1.267	-27%	9.849	-13%
FINLAND	1.208	-5%	9.231	1%
ROMANIA	1.009	-18%	8.094	-14%
HUNGARY	968	3%	6.965	-8%
SERBIA	821	-14%	5.610	-11%
SLOVAKIA	880	20%	5.505	4%
CYPRUS	710	5%	5.150	-4%
LUXEMBOURG	448	-2%	4.728	-8%
BULGARIA	665	-8%	4.091	6%
MALTA	499	19%	3.344	-5%
MONTENEGRO	608	-5%	2.796	-4%
ICELAND	387	-14%	2.503	-3%
SLOVENIA	377	-2%	2.411	-7%
LITHUANIA	245	-43%	1.854	-25%
ESTONIA	281	12%	1.613	-15%
LATVIA	251	2%	1.600	-20%
ALBANIA	156	-9%	951	-14%
BOSNIA AND HERZEGOVINA	157	8%	945	-9%
MOLDOVA	165	123%	809	66%
MACEDONIA	104	21%	610	-18%
UKRAINE	-	-	-	-

EBAA TRAFFIC TRACKER - AUGUST 2023

This report is made possible thanks to EUROCONTROL and WINGX ADVANCE - www.ebaa.org

TOP 10 ACTIVE AIRPORTS – AUGUST 2023

AVERAGE DAILY BUSINESS AVIATION DEPARTURES




EBAA TRAFFIC TRACKER - AUGUST 2023

RANK	ICAO CODE	NAME	MONTH CURRENT YEAR	MONTH GROWTH	YTD CURRENT YEAR	YTD GROWTH
1	LFMN	Nice	73,9	-2,5%	52,9	-7,8%
2	LIEO	Olbia	52,6	3,1%	19,3	-0,7%
3	LFPB	Paris Le Bourget	51,8	-13,5%	73,2	-10,5%
4	LSGG	Geneva	42,2	-4,9%	44,8	-7,0%
5	LEIB	Ibiza	39,4	-11,5%	22,0	-13,5%
6	EGLF	Farnborough	38,7	-2,4%	39,3	-6,7%
7	LEPA	Palma de Mallorca	33,2	-13,1%	24,6	-14,4%
8	LGAV	Athens	32,8	-4,1%	19,8	-8,1%
9	EGGW	London Luton	31,0	-17,3%	34,5	-10,4%
10	EGKB	London Biggin Hill	30,9	-10,6%	29,4	-13,8%

TOP 30 AIRPORTS – STATE OF PLAY

« YEAR-TO-DATE » details in Europe (flights from january onwards)

STATE OF PLAY - YTD (from january onwards)



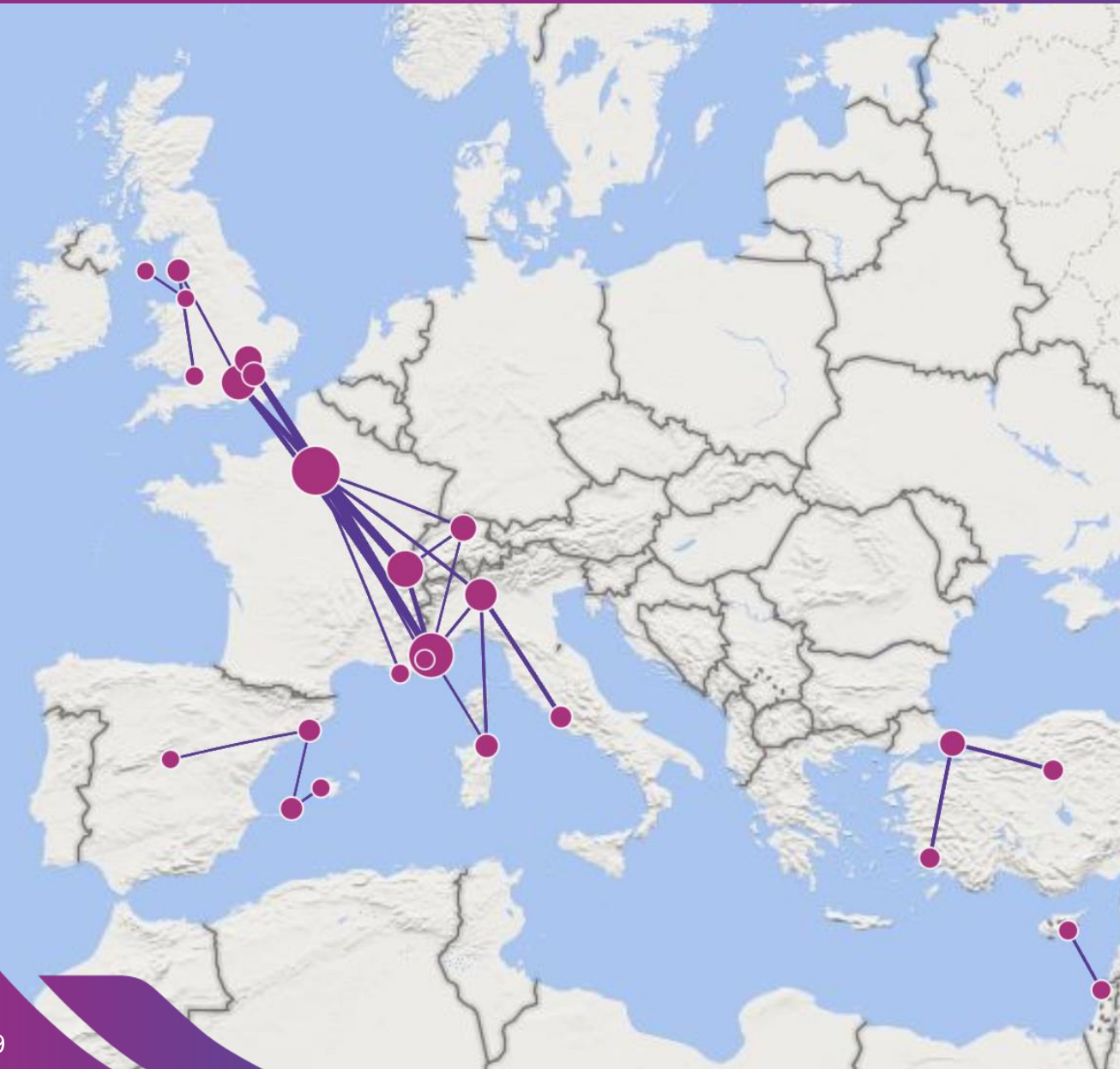
	MONTH CURRENT YEAR	MONTH GROWTH	YTD CURRENT YEAR	YTD GROWTH
PARIS LE BOURGET	4.159	-5%	37.198	-10%
NICE CÔTE D'AZUR	4.124	1%	27.091	-7%
GENEVA INTERNATIONAL	3.115	-9%	23.384	-7%
FARNBOROUGH	2.696	-3%	20.003	-7%
LONDON LUTON	2.324	-13%	17.871	-10%
ZURICH	2.257	-11%	17.621	-8%
MILANO LINATE	2.039	0%	17.238	5%
LONDON BIGGIN HILL	2.042	-14%	14.870	-14%
PALMA DE MALLORCA	2.105	-8%	12.273	-14%
ROMA CIAMPINO	1.669	-7%	11.166	-1%
IBIZA	2.246	-15%	11.053	-14%
ISTANBUL ATATÜRK	1.884	7%	10.462	-3%
AMSTERDAM SCHIPHOL	1.484	-7%	10.197	-7%
ATHENS INTERNATIONAL	1.951	-2%	10.152	-7%
OLBIA COSTA SMERALDA	2.531	0%	9.844	-1%
MALAGA COSTA DEL SOL	1.636	-4%	9.692	-11%
MADRID BARAJAS	1.122	-5%	9.634	-6%
CANNES MANDELIEU	1.493	-5%	9.616	-12%
BERLIN SCHÖNEFELD	1.058	-8%	9.138	-16%
PRAGUE VACLAV HAVEL	1.164	-5%	9.049	-3%
WIEN SCHWECHAT	1.042	-17%	9.009	-10%
MÜNCHEN	1.005	-13%	8.765	-14%
BARCELONA	1.013	1%	8.254	-6%
LONDON STANSTED	1.055	-9%	7.494	-6%
HAMBURG	882	-15%	6.808	-13%
SALZBURG W. A. MOZART	997	-17%	6.452	-11%
STUTTGART	793	-18%	6.389	-3%
NAPOLI CAPODICHINO	1155	-11%	6.201	-3%
KÖLN BONN	803	-9%	5.824	-14%
DUSSELDORF	747	1%	5,623	-8%

TOP 30 BUSINESS AVIATION ROUTES – STATE OF PLAY

« YEAR-TO-DATE » details in Europe (flights from january onwards)



EBAA TRAFFIC TRACKER - AUGUST 2023



AIRPORT 1		AIRPORT 2		YTD CURRENT YEAR	YTD GROWTH(*)
🇨🇭 LSGG	Geneva International	🇫🇷 LFPB	Paris Le Bourget	2.152	-7%
🇫🇷 LFMN	Nice Côte d'Azur	🇫🇷 LFPB	Paris Le Bourget	1.851	-8%
🇫🇷 LFMN	Nice Côte d'Azur	🇬🇧 EGLF	Farnborough	1.209	-7%
🇫🇷 LFMN	Nice Côte d'Azur	🇨🇭 LSGG	Geneva International	1.175	-5%
🇮🇹 LIRA	Roma Ciampino	🇮🇹 LIML	Milano Linate	1.120	+2%
🇬🇧 EGLF	Farnborough	🇫🇷 LFPB	Paris Le Bourget	987	-10%
🇹🇷 LTBA	Istanbul Atatürk	🇹🇷 LTAC	Ankara Esenboğa	933	+10%
🇹🇷 LTBA	Istanbul Atatürk	🇹🇷 LTFE	Mugla Milas Bodrum	923	+1%
🇫🇷 LFPB	Paris Le Bourget	🇬🇧 EGGW	London Luton	868	-12%
🇬🇧 EGGW	London Luton	🇫🇷 LFMN	Nice Côte d'Azur	839	-18%
🇫🇷 LFPB	Paris Le Bourget	🇮🇹 LIML	Milano Linate	835	+4%
🇬🇧 EGLF	Farnborough	🇨🇭 LSGG	Geneva International	784	-16%
🇮🇹 LIEO	Olbia Costa Smeralda	🇮🇹 LIML	Milano Linate	766	+5%
🇬🇧 EGKB	London Biggin Hill	🇫🇷 LFPB	Paris Le Bourget	745	-19%
🇮🇱 LLBG	Tel Aviv International	🇨🇵 LCLK	Larnaka International	742	+8%
🇫🇷 LFMN	Nice Côte d'Azur	🇮🇹 LIML	Milano Linate	727	+8%
🇬🇧 EGGD	Bristol	🇬🇧 EGNL	Walney Island	698	+22%
🇨🇭 LSZH	Zurich	🇫🇷 LFPB	Paris Le Bourget	690	-9%
🇫🇷 LFPB	Paris Le Bourget	🇫🇷 LFMD	Cannes Mandelieu	689	-23%
🇫🇷 LFPB	Paris Le Bourget	🇫🇷 LFTH	Toulon-Hyeres	688	+14%
🇨🇭 LSZH	Zurich	🇨🇭 LSGG	Geneva International	660	-5%
🇪🇸 LEIB	Ibiza	🇪🇸 LEPA	Palma de Mallorca	637	-35%
🇫🇷 LFMN	Nice Côte d'Azur	🇬🇧 EGKB	London Biggin Hill	633	-10%
🇪🇸 LEMD	Madrid Barajas	🇪🇸 LEBL	Barcelona	629	-8%
🇪🇸 LFMN	Nice Côte d'Azur	🇪🇸 LIEO	Olbia Costa Smeralda	629	+19%
🇬🇧 EGNL	Walney Island	🇬🇧 EGLF	Farnborough	623	+7%
🇨🇭 LSZH	Zurich	🇫🇷 LFMN	Nice Côte d'Azur	611	-5%
🇬🇧 EGGP	Liverpool International	🇬🇧 EGNS	Ronaldsway	578	+1%
🇪🇸 LEIB	Ibiza	🇪🇸 LEBL	Barcelona	575	-8%
🇬🇧 EGLF	Farnborough	🇬🇧 EGGW	London Luton	569	-1%

TOP 10 FLOWS– AUGUST 2023

AVERAGE DAILY BUSINESS AVIATION FLIGHTS



EBAA TRAFFIC TRACKER - AUGUST 2023

ORIGIN	DESTINATION	MONTH CURRENT YEAR	MONTH GROWTH	YTD CURRENT YEAR	YTD GROWTH
France	France	125,9	-17,3%	134,6	-14,7%
UK-Continental	UK-Continental	123,6	-3,4%	113,1	-6,9%
Germany	Germany	101,8	-11,0%	110,8	-7,4%
Italy	Italy	90,6	1,0%	68,5	-2,1%
Spain-Continental	Spain-Continental	63,5	2,6%	51,9	-7,2%
Türkiye	Türkiye	54,5	-2,6%	39,8	9,7%
Norway-Continental	Norway-Continental	45,9	-6,2%	43,1	-6,6%
Sweden	Sweden	37,5	-2,6%	36,9	2,7%
Italy	France	36,5	0,7%	27,2	-2,6%
France	Italy	34,0	2,1%	27,1	-3,0%

TRAFFIC PER STATE – AUGUST 2023

AVERAGE DAILY BUSINESS AVIATION FLIGHTS – PART 1



EBA A TRAFFIC TRACKER - AUGUST 2023

STATE	MONTH CURRENT YEAR	MONTH PREVIOUS YEAR	MONTH CHANGE	MONTH GROWTH	YTD CURRENT YEAR	YTD PREVIOUS YEAR	YTD CHANGE	YTD GROWTH
NM Area	2.296,6	2.495,2	-198,5	-8,0%	2.098,0	2.275,2	-177,2	-7,8%
ECAC	2.288,4	2.488,2	-199,8	-8,0%	2.086,8	2.265,5	-178,7	-7,9%
ESRA08	2.276,5	2.474,4	-197,9	-8,0%	2.072,3	2.246,3	-174,0	-7,7%
ESRA02	2.265,4	2.463,7	-198,3	-8,0%	2.061,7	2.232,8	-171,1	-7,7%
SES-RP2	2.195,9	2.388,0	-192,1	-8,0%	2.013,2	2.189,4	-176,2	-8,0%
SES-RP3	2.085,8	2.276,4	-190,5	-8,4%	1.915,3	2.086,3	-171,0	-8,2%
EU27	2.033,9	2.222,3	-188,4	-8,5%	1.866,5	2.035,2	-168,7	-8,3%
FABEC	1.367,8	1.536,6	-168,8	-11,0%	1.341,5	1.481,7	-140,2	-9,5%
France	910,5	1.006,4	-95,9	-9,5%	851,0	945,9	-94,9	-10,0%
BLUE MED FAB	835,3	871,2	-35,9	-4,1%	609,7	646,1	-36,4	-5,6%
Italy	667,8	697,2	-29,3	-4,2%	505,7	537,6	-31,9	-5,9%
Germany	524,5	600,3	-75,8	-12,6%	559,2	616,3	-57,1	-9,3%
UK-Ireland FAB	496,8	550,3	-53,5	-9,7%	486,3	531,9	-45,6	-8,6%
UK-Continental	482,9	539,2	-56,3	-10,4%	476,1	522,5	-46,5	-8,9%
FAB CE	444,5	480,8	-36,3	-7,5%	394,8	420,5	-25,7	-6,1%
Switzerland	372,6	432,1	-59,4	-13,8%	386,0	440,8	-54,8	-12,4%
South West FAB	359,4	385,9	-26,6	-6,9%	314,4	340,8	-26,4	-7,8%
Spain	354,1	380,4	-26,2	-6,9%	307,8	334,5	-26,7	-8,0%
Spain-Continental	346,2	373,6	-27,5	-7,3%	299,0	327,2	-28,2	-8,6%
Austria	265,0	299,2	-34,3	-11,4%	252,4	273,6	-21,1	-7,7%
Greece	267,2	280,5	-13,3	-4,7%	153,4	161,1	-7,7	-4,8%
Belgium/Luxembourg	192,7	220,2	-27,5	-12,5%	221,9	237,2	-15,3	-6,4%

TRAFFIC PER STATE – AUGUST 2023

AVERAGE DAILY BUSINESS AVIATION FLIGHTS – PART 2



EBA A TRAFFIC TRACKER - AUGUST 2023

STATE	MONTH CURRENT YEAR	MONTH PREVIOUS YEAR	MONTH CHANGE	MONTH GROWTH	YTD CURRENT YEAR	YTD PREVIOUS YEAR	YTD CHANGE	YTD GROWTH
Türkiye	207,9	213,7	-5,8	-2,7%	155,7	152,3	3,3	2,2%
Croatia	183,8	192,6	-8,7	-4,5%	126,1	128,6	-2,5	-1,9%
Netherlands	143,3	167,6	-24,3	-14,5%	155,6	173,2	-17,6	-10,2%
DK-SE FAB	137,7	159,0	-21,3	-13,4%	130,9	144,4	-13,4	-9,3%
Serbia/Montenegro	137,1	143,5	-6,5	-4,5%	106,0	109,9	-3,9	-3,5%
NEFAB	111,1	117,6	-6,5	-5,5%	99,2	119,4	-20,2	-16,9%
Czech Republic	106,2	111,0	-4,8	-4,3%	105,4	112,8	-7,4	-6,6%
Sweden	101,5	108,1	-6,6	-6,1%	97,2	103,9	-6,7	-6,4%
Danube FAB	101,5	106,8	-5,3	-4,9%	94,9	97,2	-2,2	-2,3%
Hungary	94,2	101,4	-7,2	-7,1%	85,6	92,5	-6,9	-7,5%
Slovenia	89,5	98,2	-8,6	-8,8%	69,8	76,0	-6,2	-8,1%
Ireland	84,1	92,5	-8,5	-9,2%	87,9	92,4	-4,6	-4,9%
Norway-Continental	78,6	86,2	-7,6	-8,8%	70,3	77,0	-6,6	-8,6%
Bulgaria	81,3	85,1	-3,8	-4,5%	74,7	73,8	0,9	1,2%
Denmark	69,0	84,3	-15,3	-18,1%	65,3	75,0	-9,7	-13,0%
Bosnia and Herzegovina	77,5	83,5	-6,1	-7,3%	59,2	61,1	-1,9	-3,1%
Baltic FAB	72,3	78,9	-6,6	-8,4%	69,5	88,8	-19,3	-21,7%
Poland	69,8	76,5	-6,7	-8,8%	67,1	84,7	-17,5	-20,7%
Slovakia	55,9	63,9	-8,0	-12,5%	50,3	56,8	-6,5	-11,4%
Cyprus	63,0	63,6	-0,6	-0,9%	51,7	53,5	-1,8	-3,3%
Albania	63,5	62,8	0,6	1,0%	37,9	38,1	-0,2	-0,5%
Portugal-Continental	55,9	62,3	-6,4	-10,2%	57,9	61,4	-3,5	-5,7%

TRAFFIC PER STATE – AUGUST 2023

AVERAGE DAILY BUSINESS AVIATION FLIGHTS – PART 3



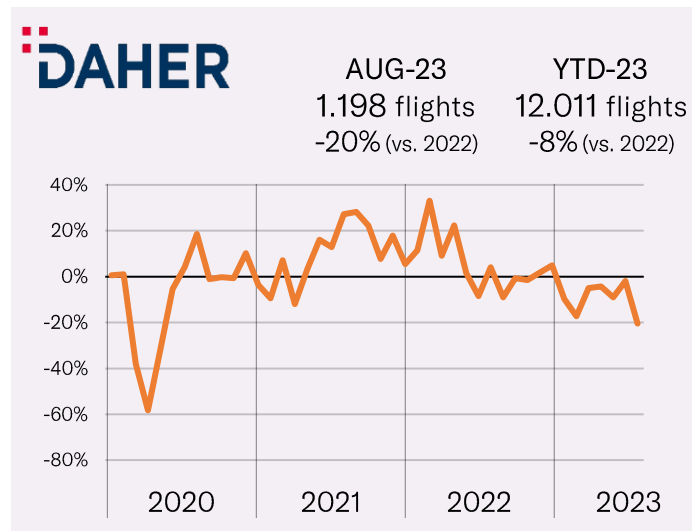
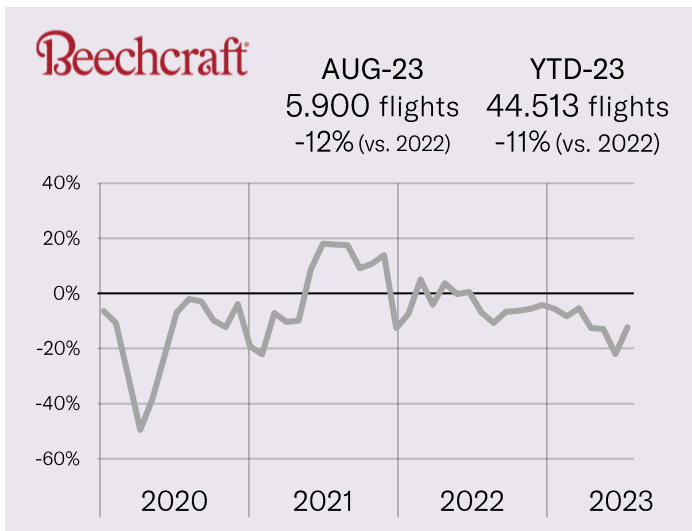
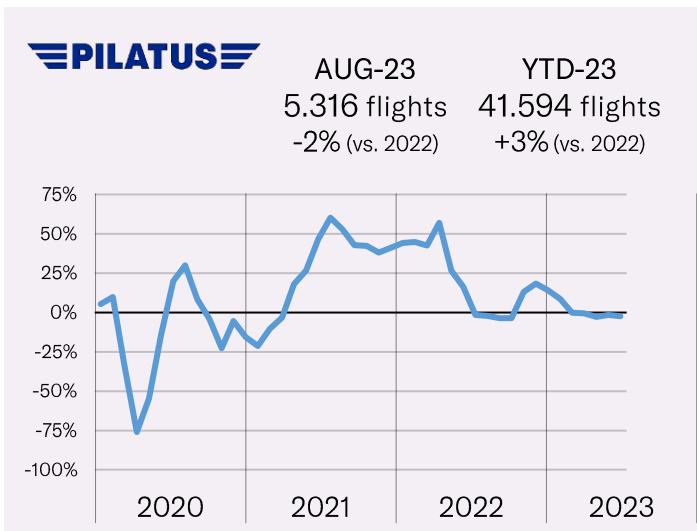
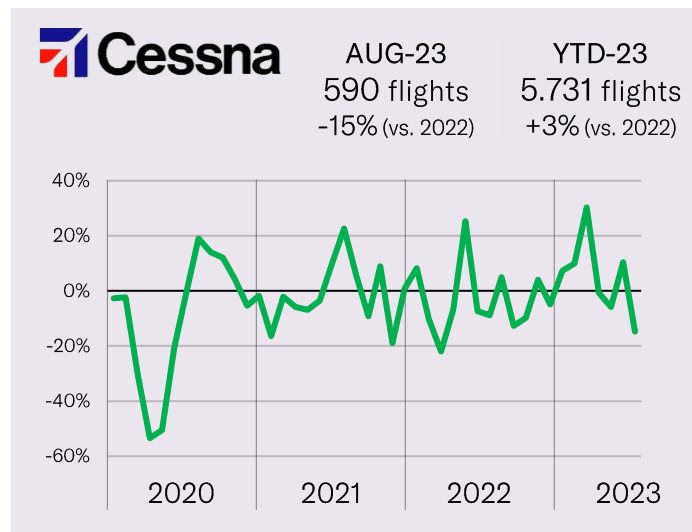
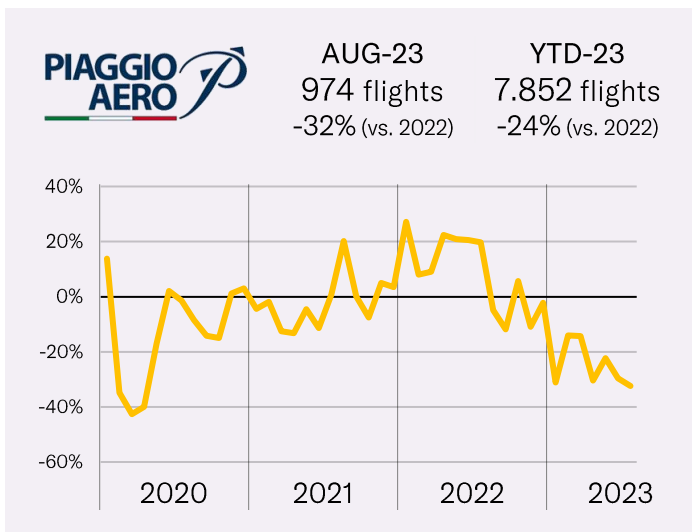
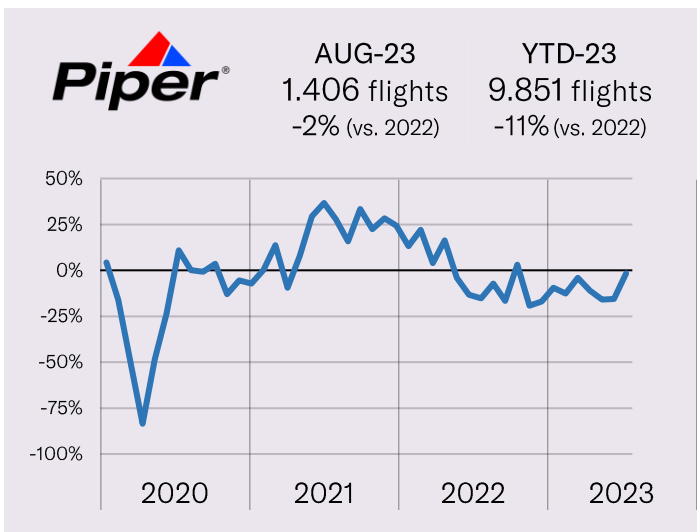
EBA A TRAFFIC TRACKER - AUGUST 2023

STATE	MONTH CURRENT YEAR	MONTH PREVIOUS YEAR	MONTH CHANGE	MONTH GROWTH	YTD CURRENT YEAR	YTD PREVIOUS YEAR	YTD CHANGE	YTD GROWTH
Romania	55,2	56,8	-1,6	-2,8%	55,0	57,6	-2,5	-4,4%
North Macedonia	46,1	44,8	1,2	2,7%	28,2	29,9	-1,7	-5,7%
Egypt	36,2	37,3	-1,1	-3,0%	35,7	35,1	0,6	1,7%
Israel	29,5	32,9	-3,4	-10,3%	25,4	29,1	-3,7	-12,8%
Morocco	33,3	30,4	2,8	9,3%	39,8	37,4	2,4	6,4%
Iceland	21,8	24,1	-2,3	-9,6%	18,6	20,3	-1,7	-8,4%
Finland	23,4	23,4	-0,1	-0,3%	22,5	24,3	-1,7	-7,2%
Malta	24,7	19,9	4,8	24,0%	20,4	20,2	0,2	0,8%
Azerbaijan	20,1	19,0	1,1	5,8%	21,2	20,2	1,1	5,3%
Portugal-SantaMaria	16,7	18,9	-2,3	-11,9%	18,4	19,2	-0,8	-4,1%
Georgia	24,0	17,8	6,3	35,2%	17,2	13,2	3,9	29,7%
Lithuania	13,9	15,6	-1,6	-10,6%	12,3	23,6	-11,3	-47,8%
Latvia	14,4	14,9	-0,5	-3,3%	11,7	24,2	-12,5	-51,5%
Spain-Canaries	14,7	14,6	0,0	0,2%	18,7	18,1	0,6	3,4%
Armenia	6,6	12,0	-5,3	-44,5%	6,9	8,8	-1,9	-21,9%
Estonia	11,8	12,0	-0,2	-1,6%	10,3	13,2	-2,9	-22,1%
Tunisia	10,2	8,7	1,5	17,1%	8,8	8,1	0,8	9,4%
Libya	5,7	3,4	2,4	69,5%	4,2	4,2	0,0	0,4%
Moldova	4,5	2,2	2,3	104,3%	2,6	3,1	-0,5	-14,8%
Belarus	0,8	1,1	-0,3	-27,3%	0,7	5,4	-4,7	-86,5%
Ukraine	0,1	0,2	-0,1	-40,0%	0,1	9,4	-9,3	-99,0%

TURBOPROPS OEMS – AUGUST 2023

MONTHLY TRAFFIC & MONTHLY GROWTH

EBA A TRAFFIC TRACKER - AUGUST 2023



JET OEMS (1/2) – AUGUST 2023

MONTHLY TRAFFIC & MONTHLY GROWTH

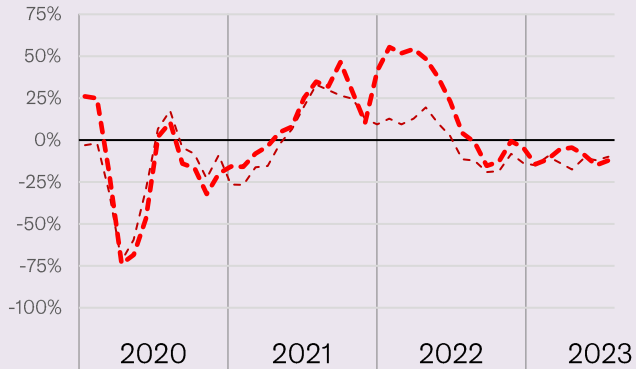


EBAA TRAFFIC TRACKER - AUGUST 2023



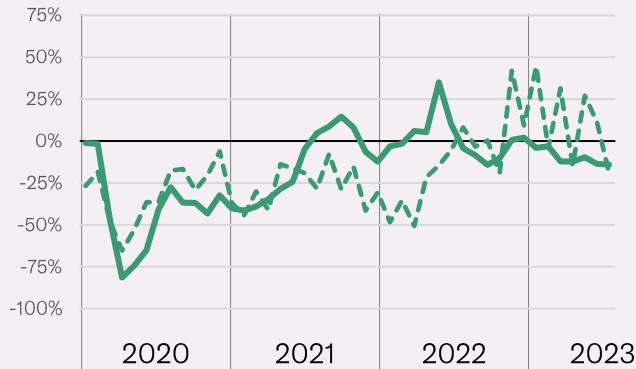
AUG-23
20.845 flights
-10% (vs. 2022)

YTD-23
145.181 flights
-12% (vs. 2022)



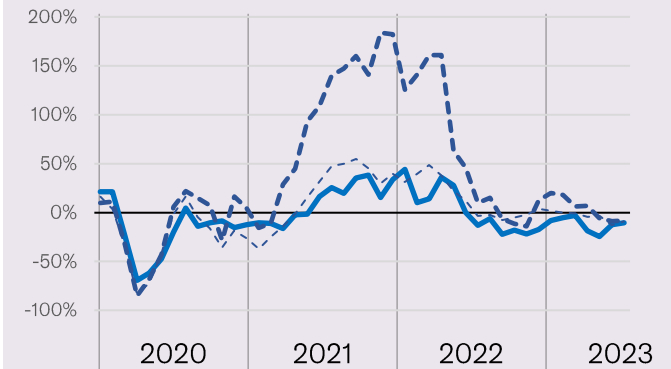
AUG-23
5.099 flights
-14% (vs. 2022)

YTD-23
42.008 flights
-8% (vs. 2022)



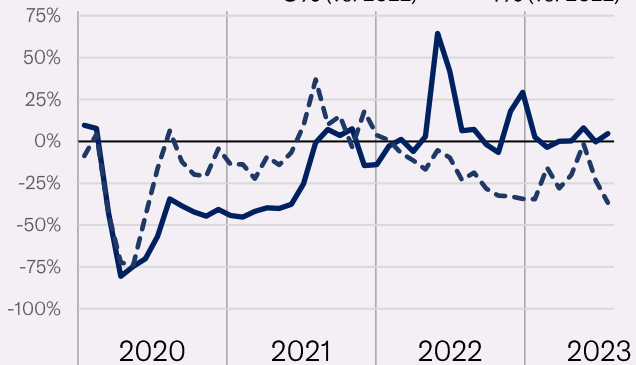
AUG-23
8.146 flights
-9% (vs. 2022)

YTD-23
58.392 flights
-6% (vs. 2022)



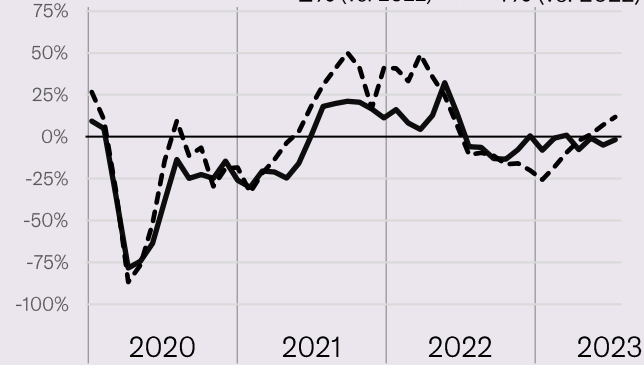
AUG-23
5.149 flights
-3% (vs. 2022)

YTD-23
37.376 flights
-1% (vs. 2022)



AUG-23
10.841 flights
+2% (vs. 2022)

YTD-23
73.778 flights
-4% (vs. 2022)



**Heavy
Jets**



**Medium
Jets**



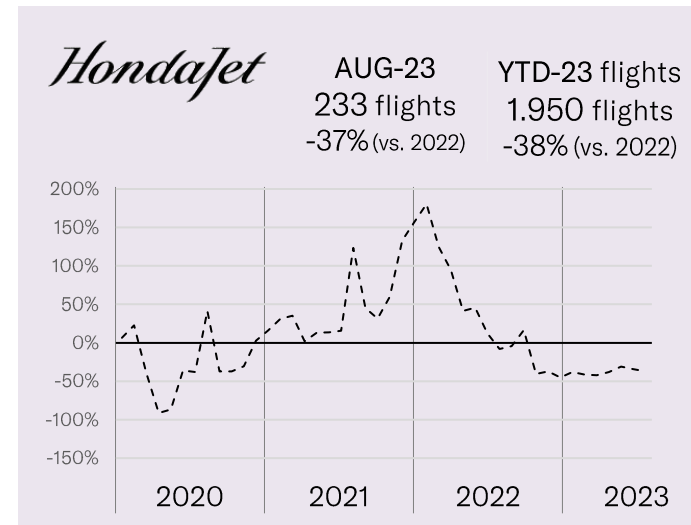
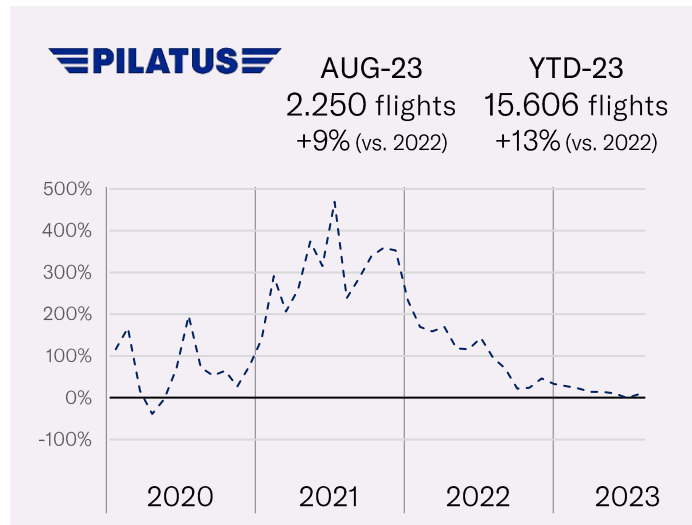
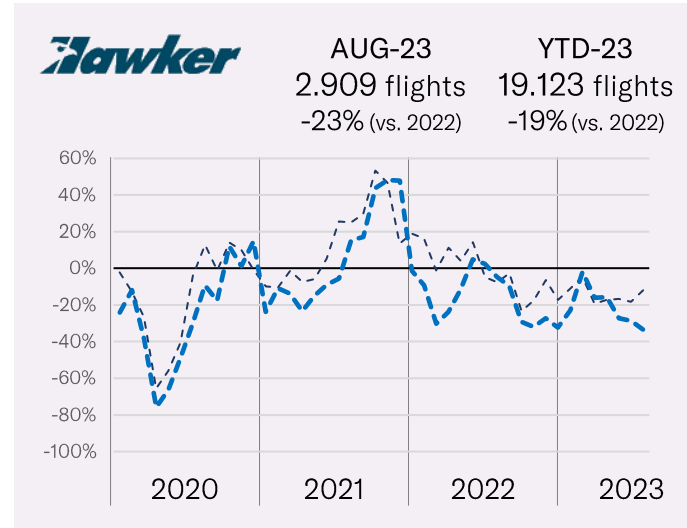
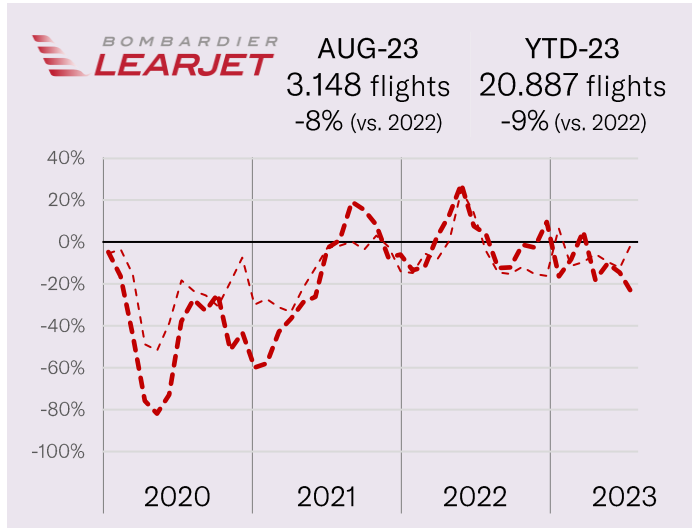
**Light
Jets**

JET OEMS (2/2) – AUGUST 2023

MONTHLY TRAFFIC & MONTHLY GROWTH



EBAA TRAFFIC TRACKER - AUGUST 2023



**Heavy
Jets**



**Medium
Jets**



**Light
Jets**

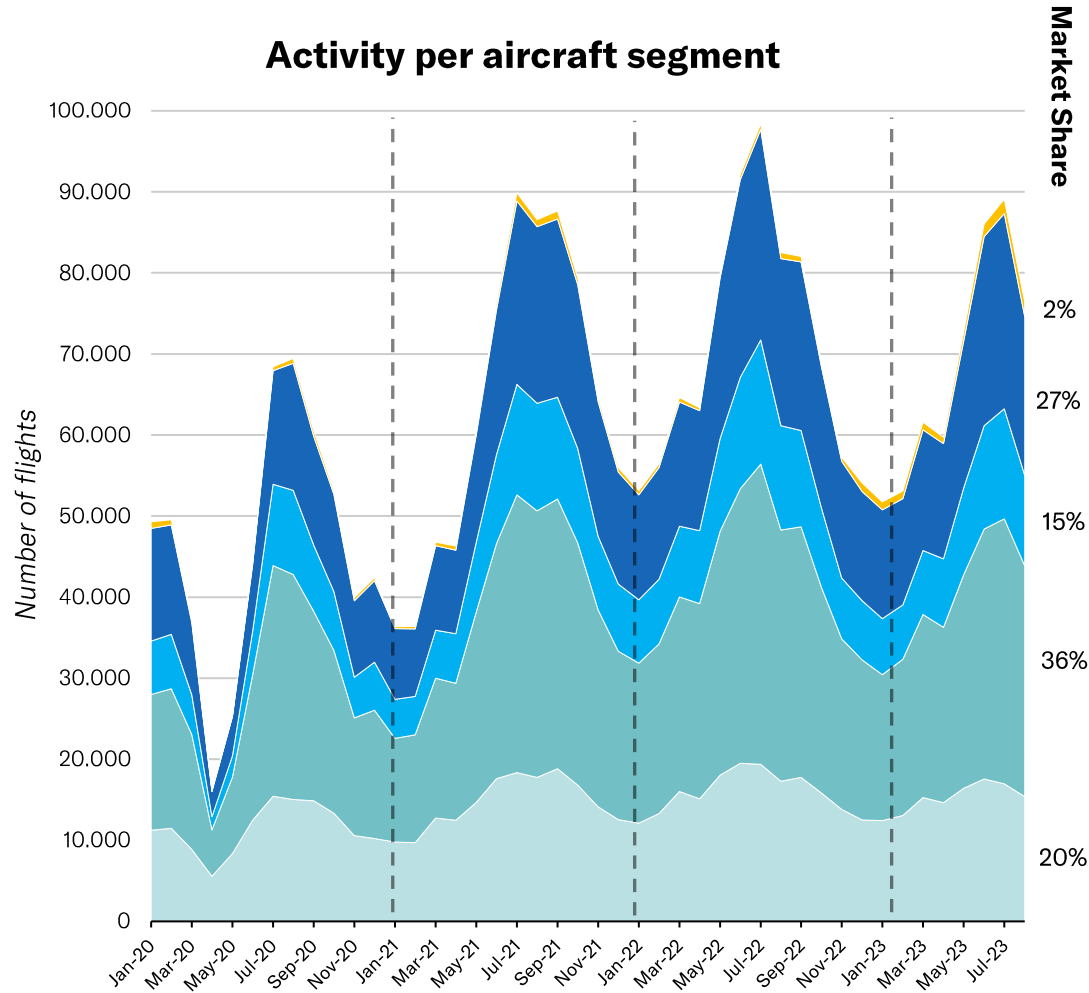
BUSINESS AVIATION AIRPLANES – AUGUST 2023

MONTHLY TRAFFIC & MONTHLY GROWTH



EBAA TRAFFIC TRACKER - AUGUST 2023

Activity per aircraft segment



Bizliners



Heavy Jets



Medium Jets

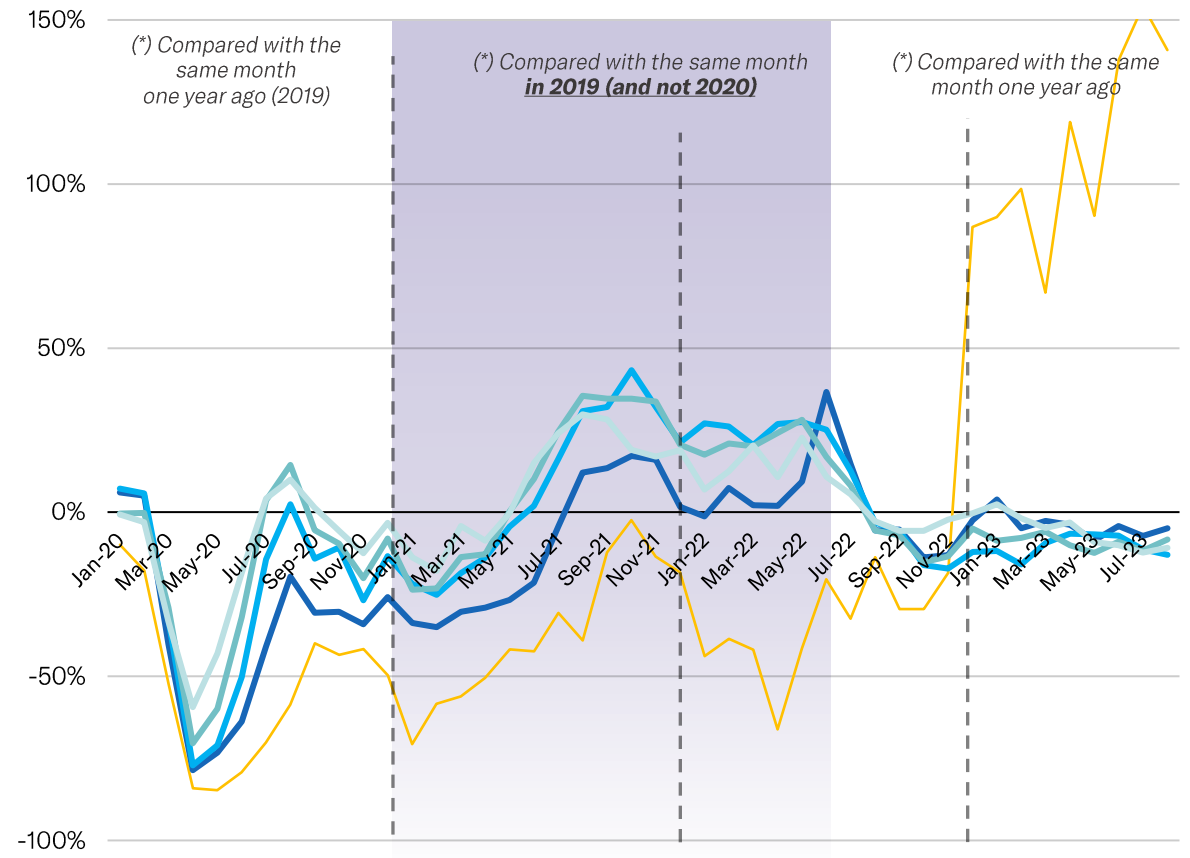


Light Jets



Turboprops

Monthly Growth - compared with */**



(*) Compared with the same month one year ago (2019)

(*) Compared with the same month **in 2019 (and not 2020)**

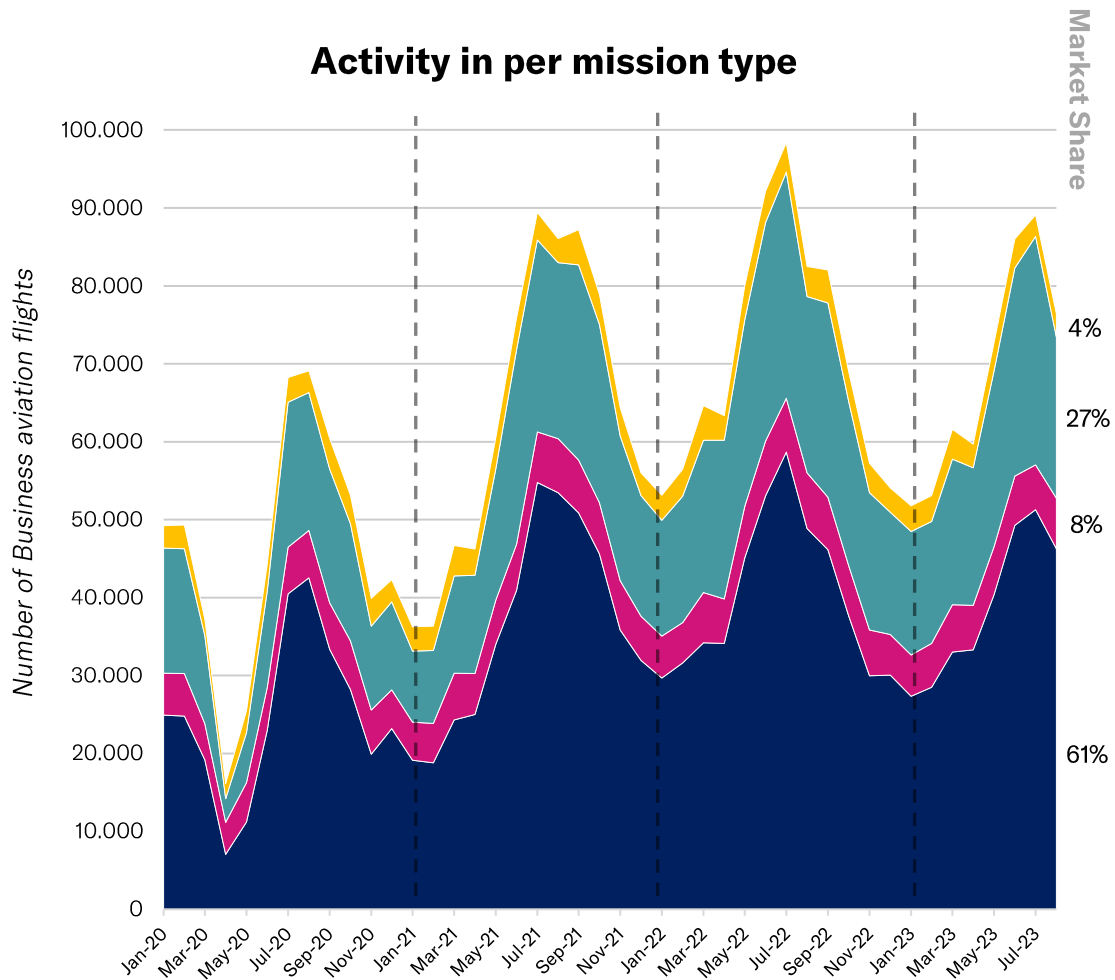
(*) Compared with the same month one year ago

BUSINESS AVIATION MISSIONS – AUGUST 2023

MONTHLY TRAFFIC & MONTHLY GROWTH

EBAA TRAFFIC TRACKER - AUGUST 2023

Activity in per mission type



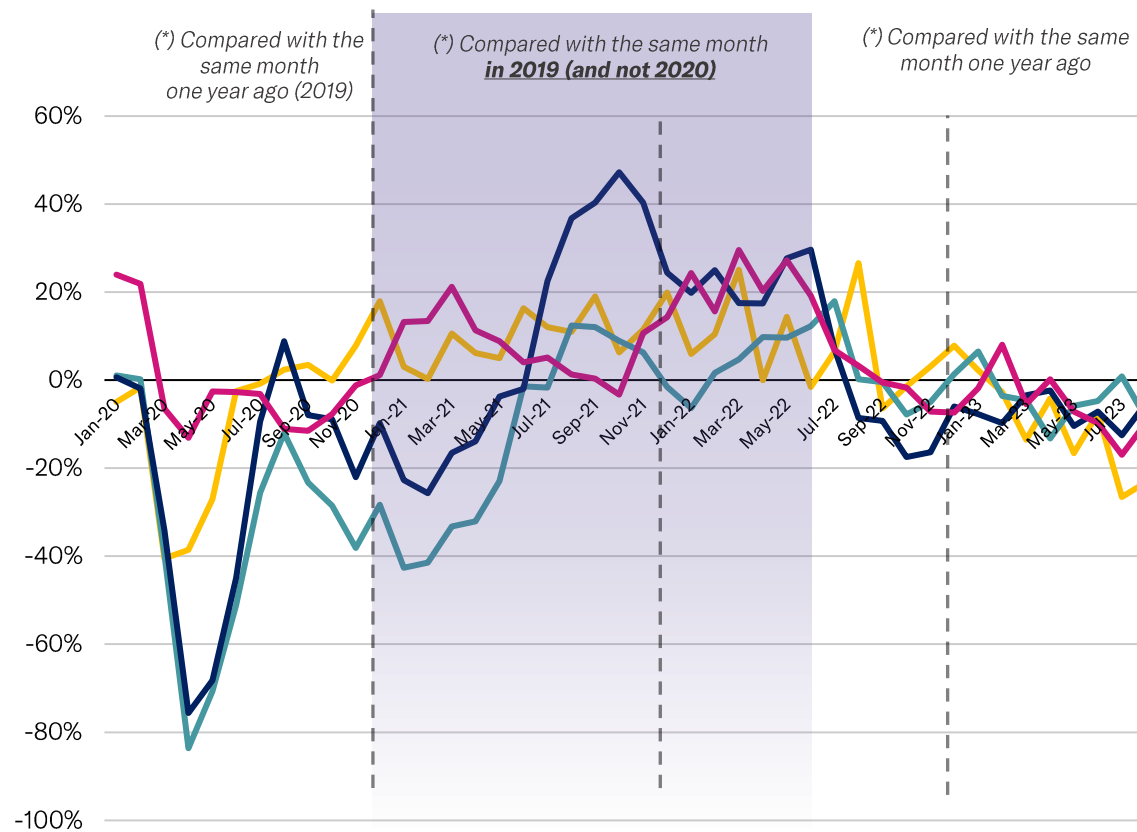
 **Commercial**

 **Non-commercial**

 **State/Diplomatic**

 **Medical/Special**

Monthly Growth - compared with */**



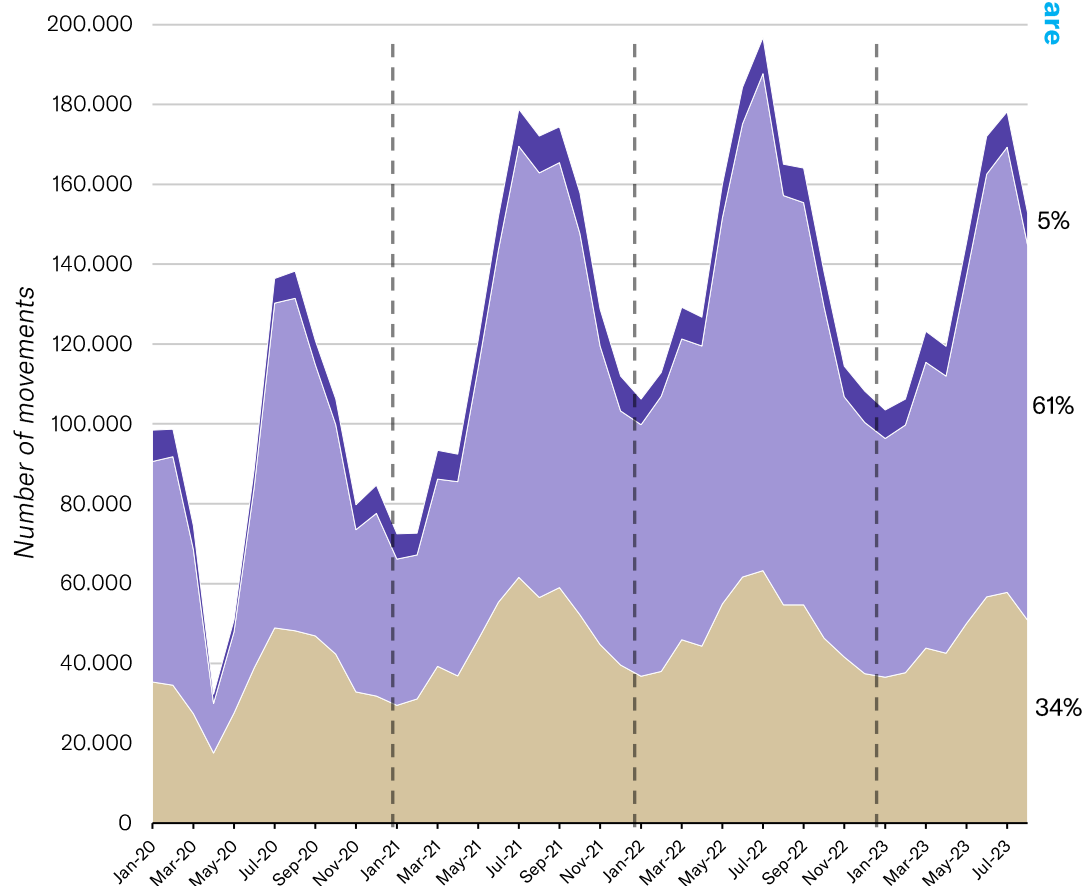
BUSINESS AVIATION ORIGINS & DESTINATIONS – AUGUST 2023

MONTHLY TRAFFIC & MONTHLY GROWTH



EBAA TRAFFIC TRACKER - AUGUST 2023

Activity per Origin-Destination

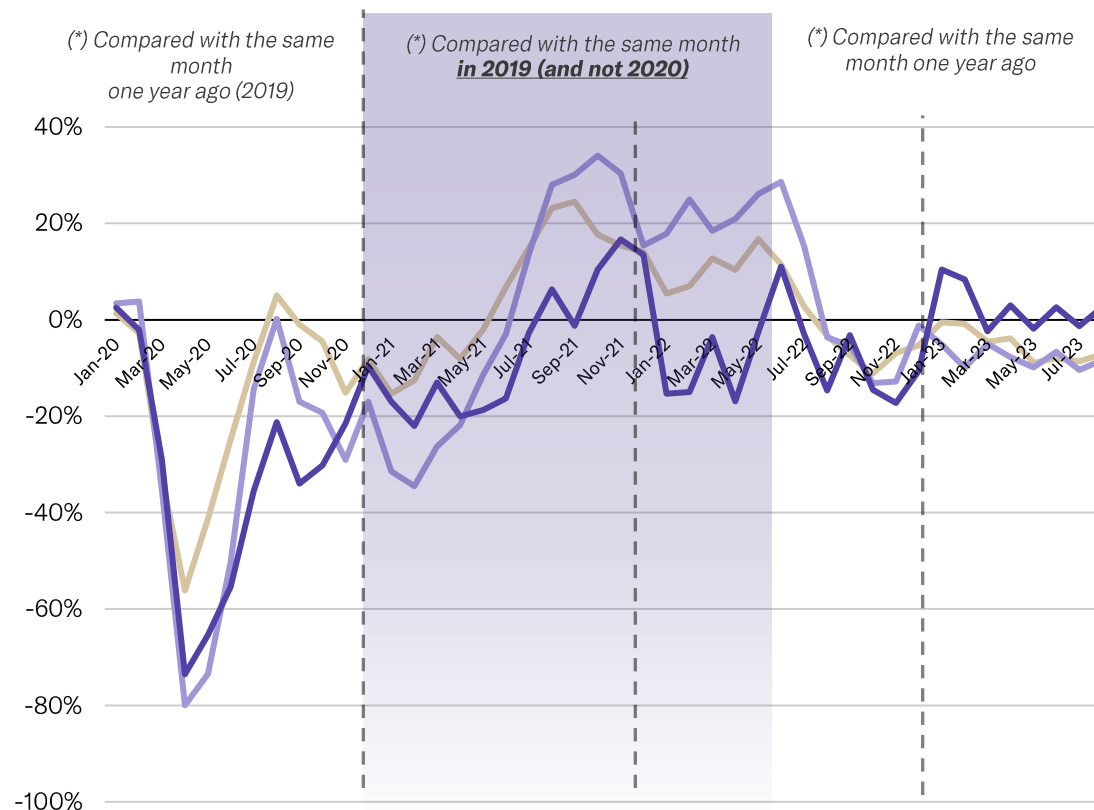


 **Extra-Europe**

 **Intra-Europe**

 **Domestic**

Monthly Growth - compared with */**



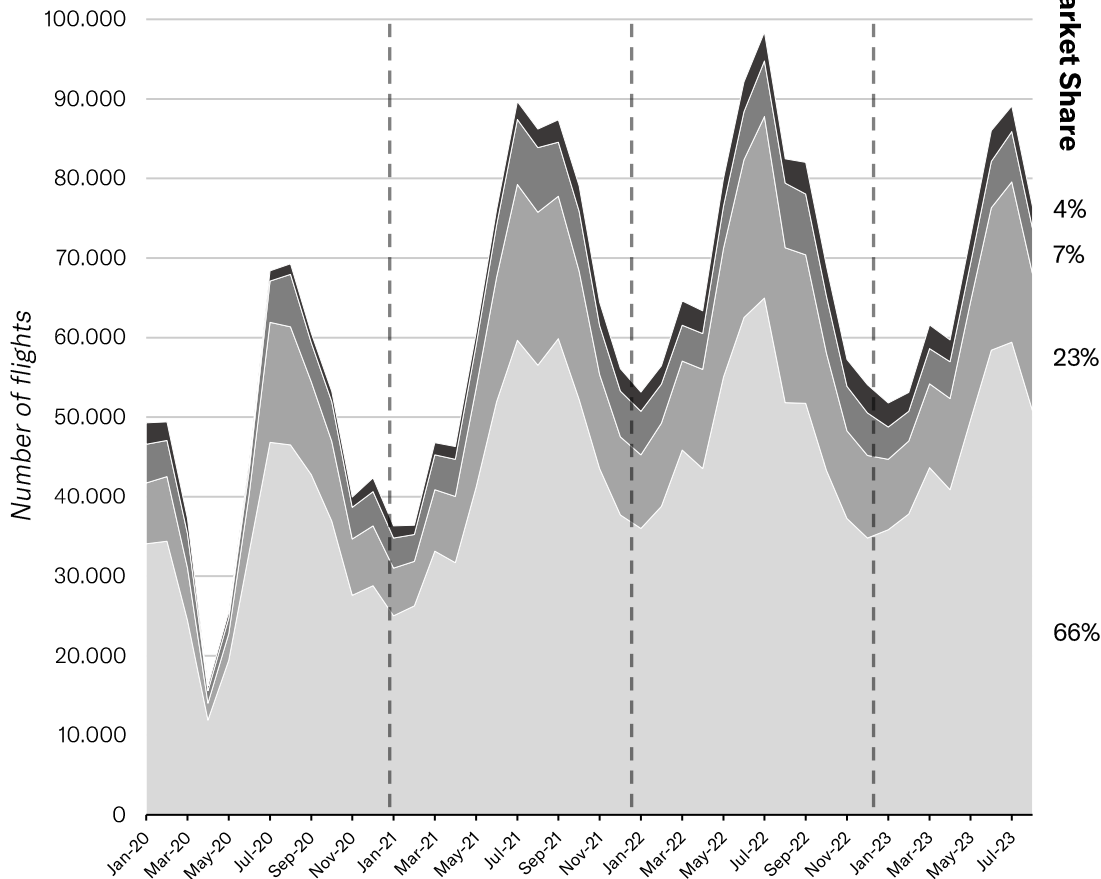
BUSINESS AVIATION FLIGHT SECTOR – AUGUST 2023

MONTHLY TRAFFIC & MONTHLY GROWTH

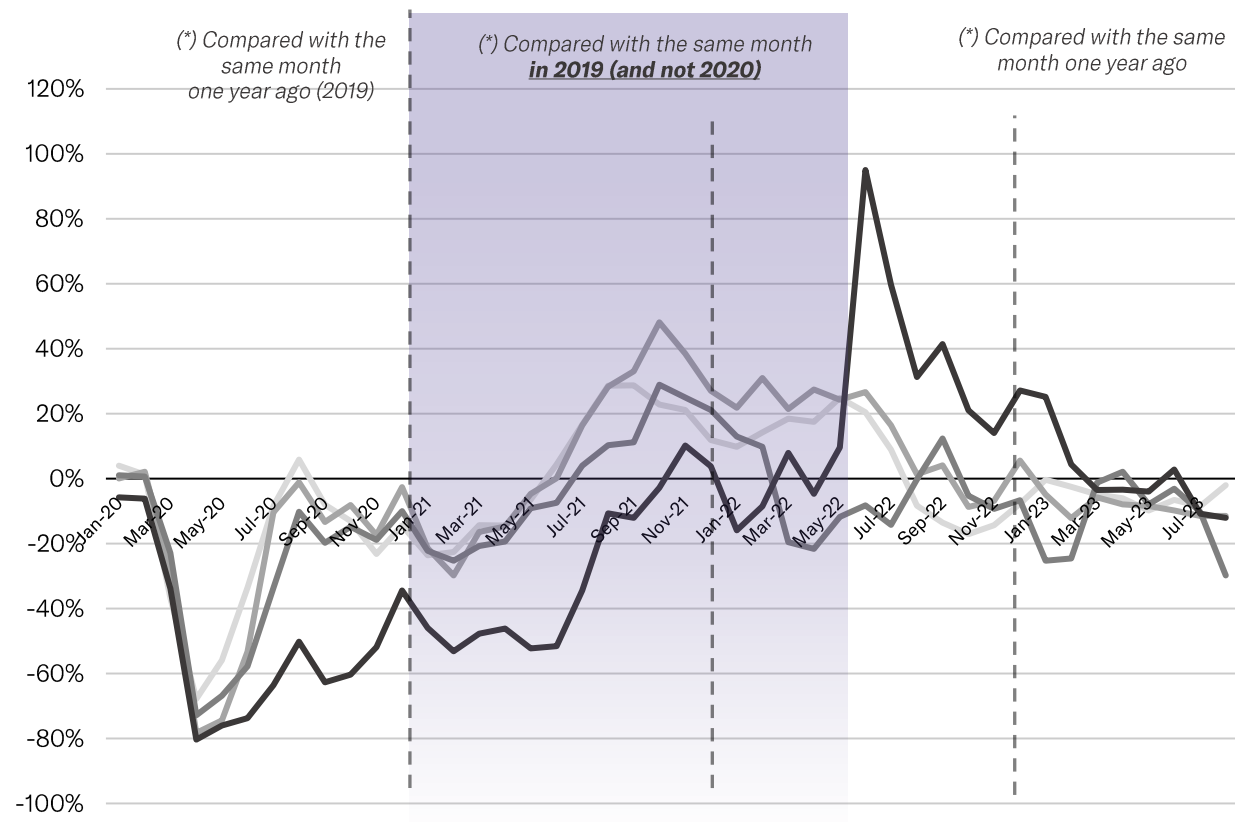


EBAA TRAFFIC TRACKER - AUGUST 2023

Activity per flight sector



Monthly Growth - compared with */**



Short Haul
(below 500nm / 1000km)



Short Haul
(below 1000nm / 2000km)



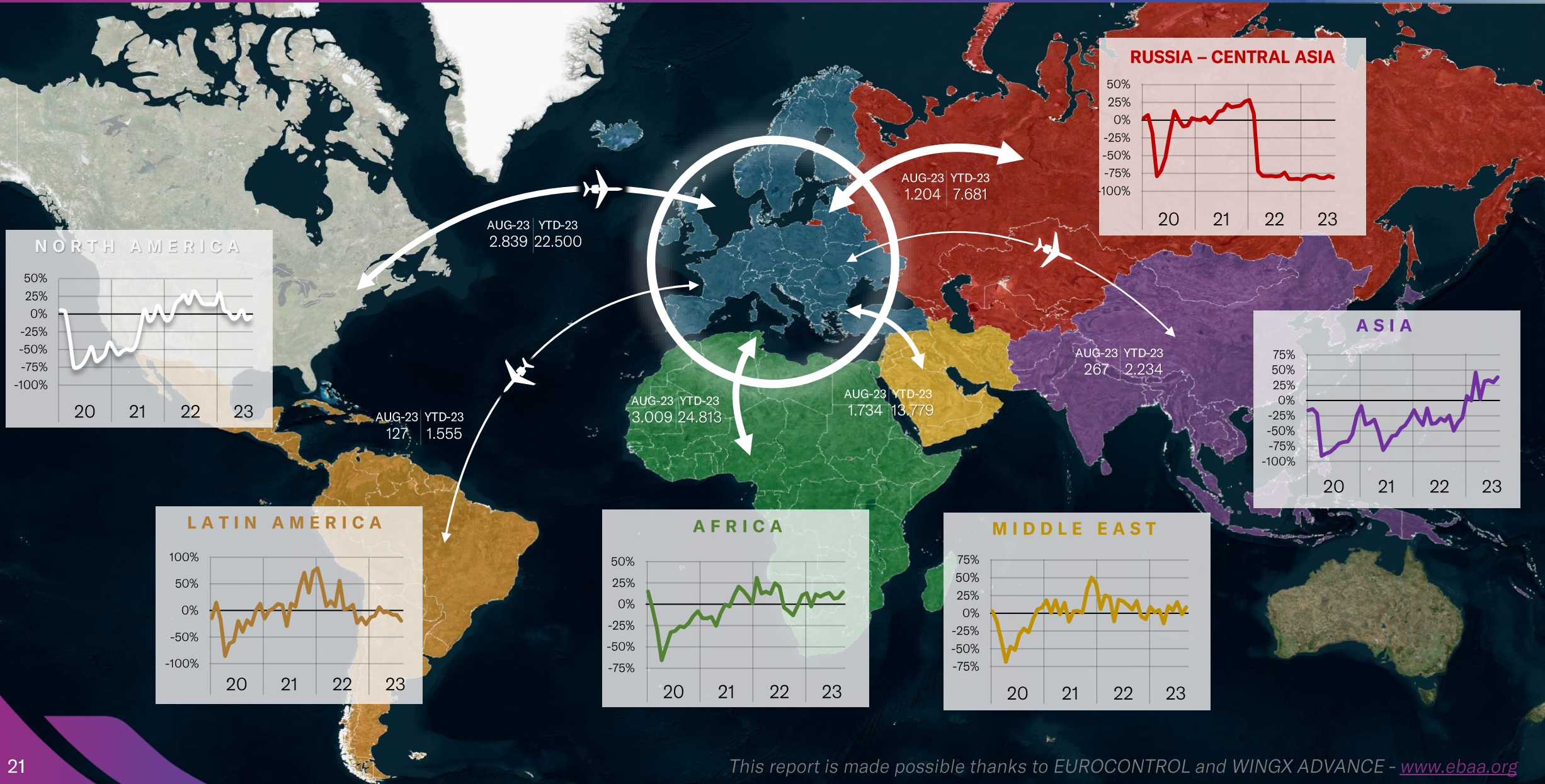
Medium Haul
(below 2500nm / 4700km)



Long Haul
(above 2500nm / 4700km)

EUROPEAN BUSINESS AVIATION INTERCONTINENTAL CONNECTIONS – AUGUST 2023

MONTHLY TRAFFIC & MONTHLY GROWTH

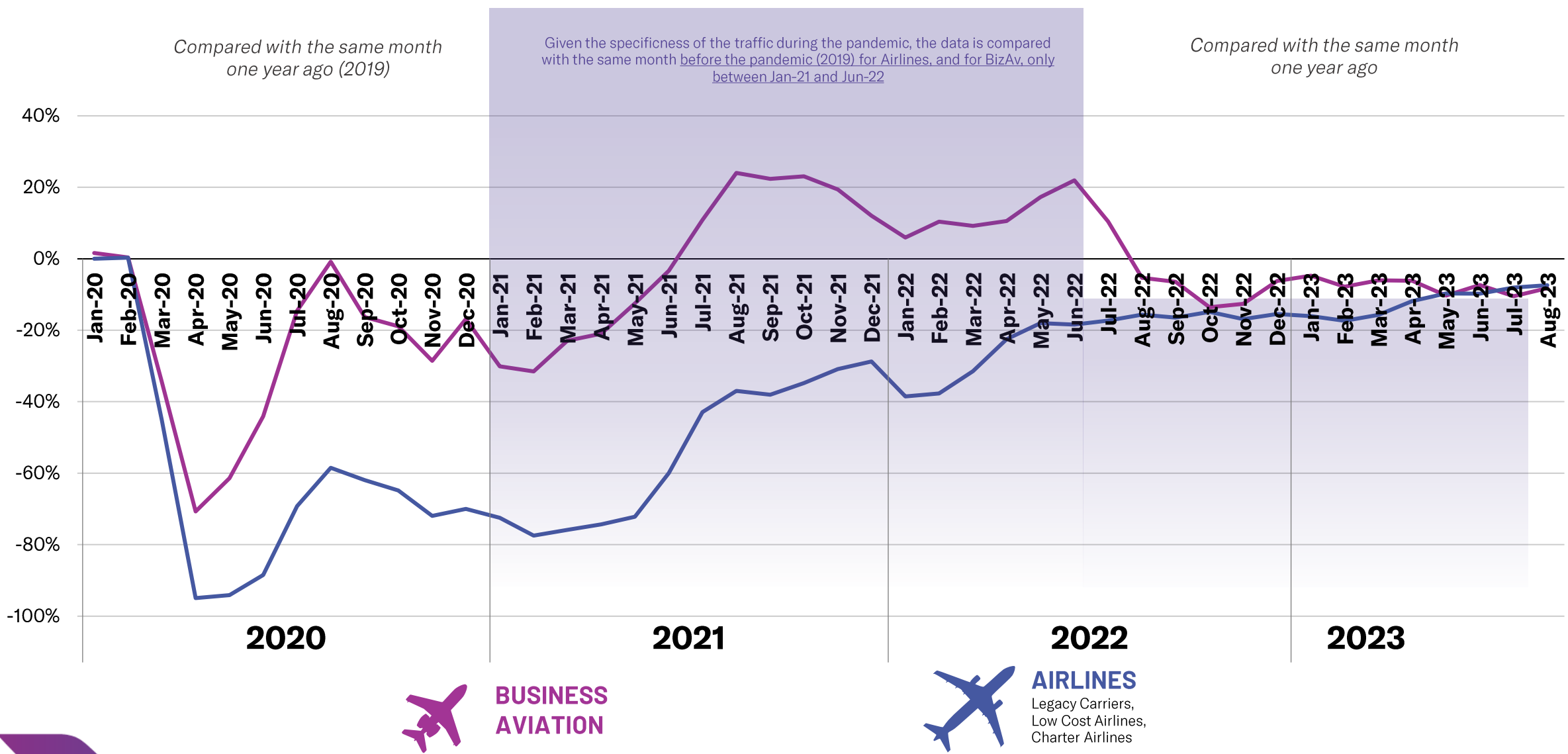


BUSINESS AVIATION VS. AIRLINES

MONTHLY TRAFFIC GROWTH



EBAA TRAFFIC TRACKER - AUGUST 2023

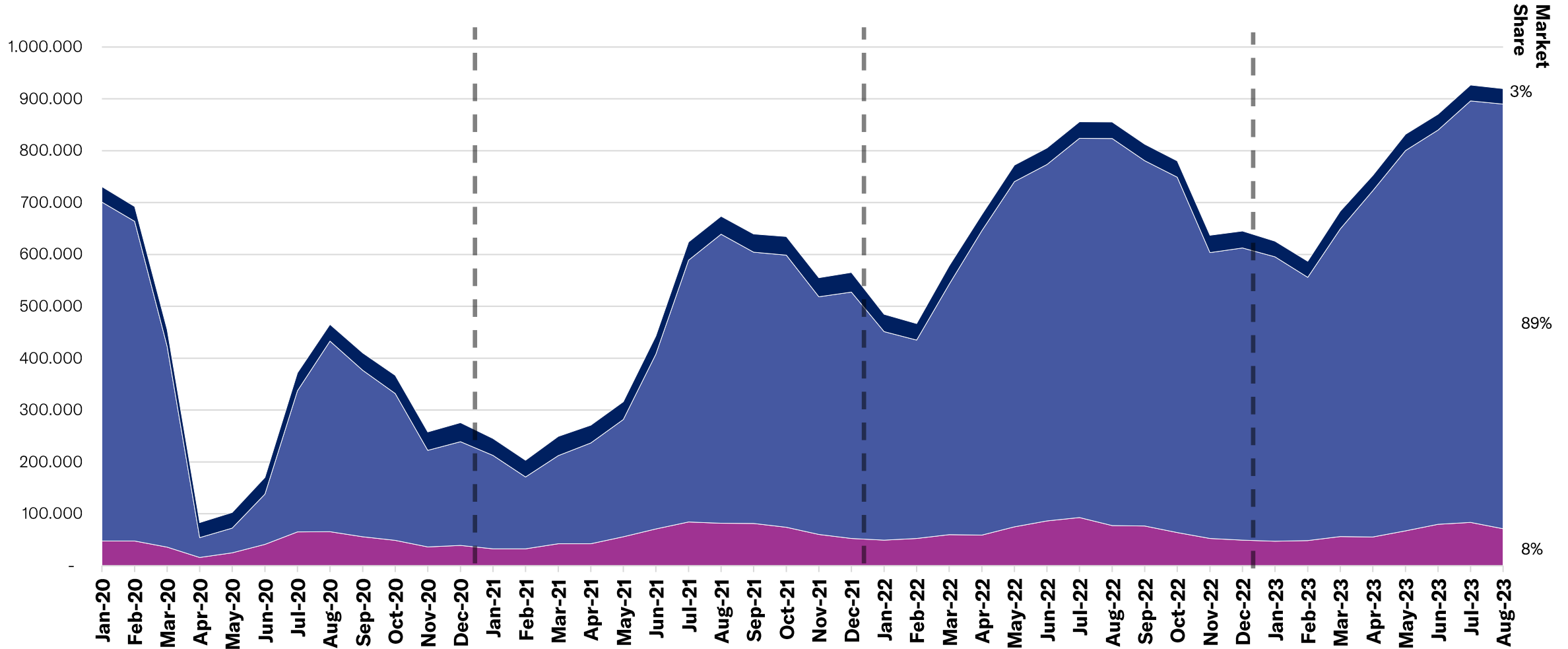


BUSINESS AVIATION VS. AIRLINES & CARGO

MONTHLY TRAFFIC MARKET SHARE



EBA TRAFFIC TRACKER - AUGUST 2023



BUSINESS AVIATION VS. AIRLINES (EUROPE)

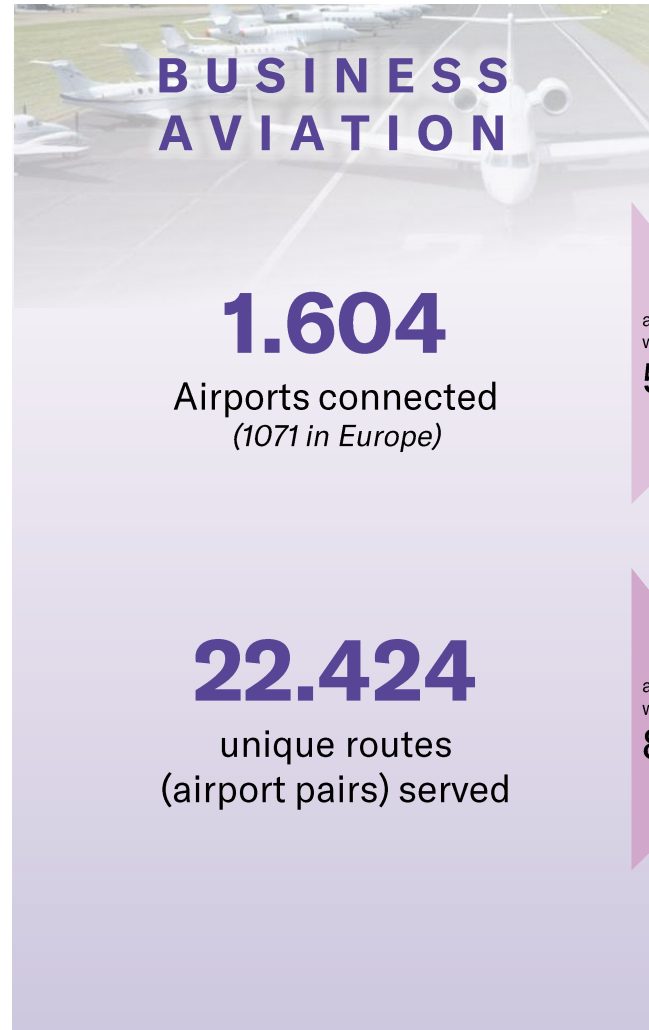
MONTHLY CONNECTIVITY COMPARISON – AUGUST 2023



Airports connected



Unique routes served

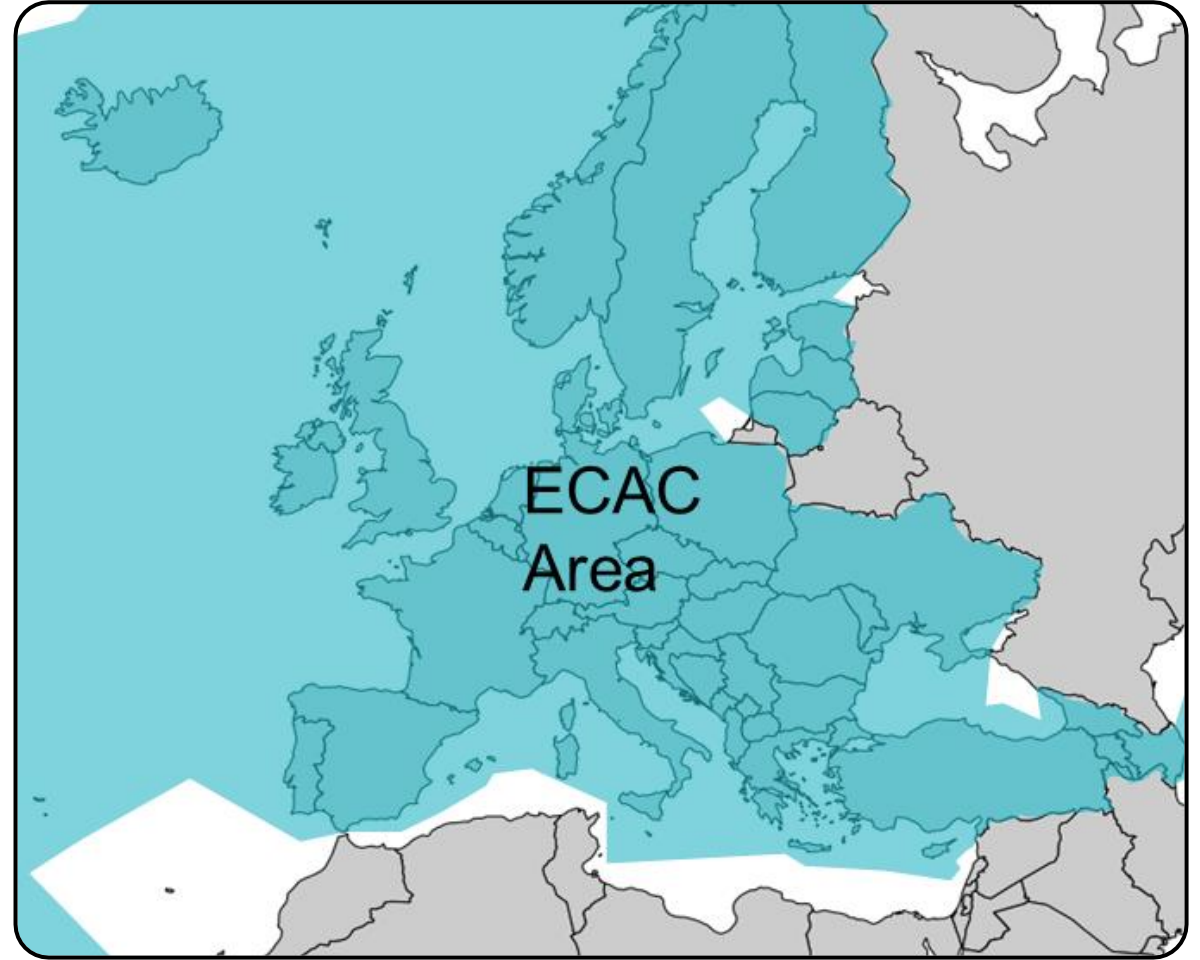
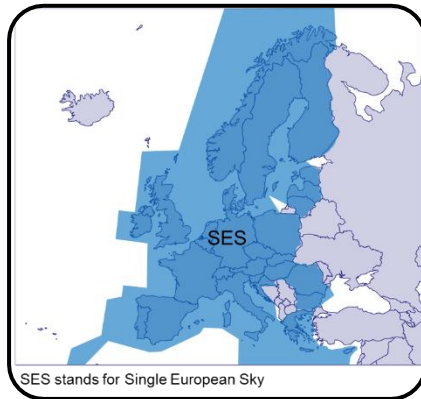
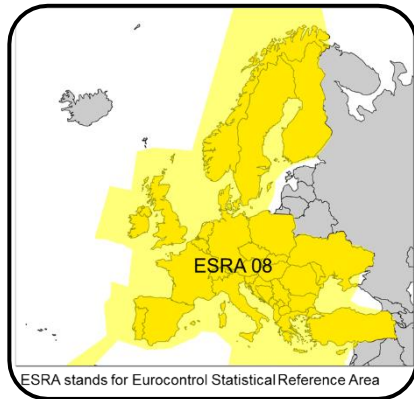
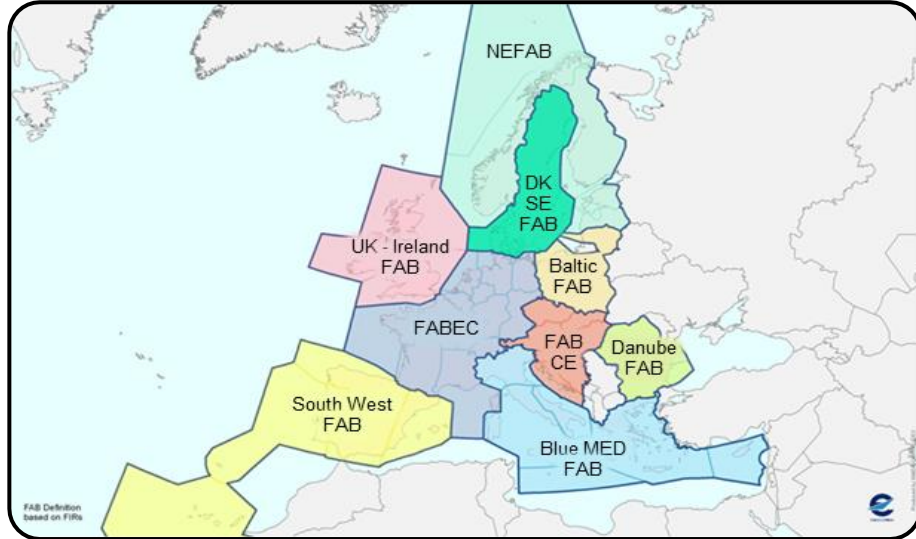


among which
52%

among which
82%

- Airlines categories are defined by EUROCONTROL as : « mainline, low cost airlines and regional airlines)
- For airlines, routes below at least 1 connection a week are excluded from the analysis (*it is assumed that below at least 1 weekly connection, a route cannot be considered as a part of the scheduled air transport offer).*

AREAS



ECAC stands for European Civil Aviation Conference

The « Business Aviation » segment is defined by Eurocontrol as follows :

A318	Airbus A318	Airbus	Bizliner	flight type G only
A319	Airbus A319	Airbus	Bizliner	flight type G only
A320	Airbus A320	Airbus	Bizliner	flight type G only
ASTR	Gulfstream G100	Gulfstream	Midsize Jet	
B350	King Air 350	Hawker Beechcraft	Turboprop	flight type G and N only
B737	Boeing 737-700	Boeing	Bizliner	flight type G only
B738	Boeing 737-800	Boeing	Bizliner	flight type G only
B739	Boeing 737-900	Boeing	Bizliner	flight type G only
B748	Boeing 747-8I	Boeing	Bizliner	flight type G only
B77L	Boeing 777-200 Freighter	Boeing	Bizliner	flight type G only
B77W	Boeing 777-300ER	Boeing	Bizliner	flight type G only
B788	Boeing 787-8	Boeing	Bizliner	flight type G only
B789	Boeing 787-9	Boeing	Bizliner	flight type G only
BE10	KingAir 100	Hawker Beechcraft	Turboprop	
BE20	King Air 200	Hawker Beechcraft	Turboprop	
BE30	Super King Air 300	Hawker Beechcraft	Turboprop	
BE40	Hawker Beechjet 400	Hawker Beechcraft	Light Jet	
BE90	King Air 90	Hawker Beechcraft	Turboprop	
BE9L	King Air 90	Hawker Beechcraft	Turboprop	
BE9T	KingAir90	Hawker Beechcraft	Turboprop	
C208	Cessna 208 Caravan	Cessna	Turboprop	
C25A	Cessna Citation CJ2	Cessna	Light Jet	
C25B	Cessna Citation CJ3	Cessna	Light Jet	
C25C	Cessna Citation CJ4	Cessna	Light Jet	
C25M	Cessna M2	Cessna	Light Jet	
C425	Cessna Corsair	Cessna	Turboprop	
C441	Cessna Conquest	Cessna	Turboprop	
C500	Cessna Citation I	Cessna	Light Jet	
C501	Cessna Citation ISP	Cessna	Light Jet	
C510	Cessna Citation Mustang	Cessna	Light Jet	
C525	Cessna Citation CJ1	Cessna	Light Jet	
C550	Cessna Citation II	Cessna	Light Jet	
C551	Cessna Citation IISP	Cessna	Light Jet	
C55B	Cessna Citation Bravo	Cessna	Light Jet	
C560	Cessna Citation V	Cessna	Light Jet	
C56X	Cessna Citation Excel / XLS	Cessna	Light Jet	

C650	Cessna Citation III	Cessna	Midsize Jet	
C680	Citation Sovereign	Cessna	Midsize Jet	
C750	Cessna Citation X	Cessna	Midsize Jet	
CL30	Challenger 300 series	Bombardier	Midsize Jet	
CL35	Challenger 350	Bombardier	Midsize Jet	
CL60	Challenger 600 series	Bombardier	Heavy Jet	
CRJ2	Challenger 800-850	Bombardier	Heavy Jet	flight type G only
E135	Embraer RJ135	Embraer	Heavy Jet	flight type G only
E145	Embraer RJ145	Embraer	Heavy Jet	flight type G only
E190	Embraer 190	Embraer	Bizliner	flight type G only
E35L	Legacy 600 series	Embraer	Heavy Jet	
E50P	Embraer Phenom 100	Embraer	Light Jet	
E545	Legacy 450 / Praetor 500	Embraer	Midsize Jet	
E550	Embraer Legacy 500	Embraer	Midsize Jet	
E55P	Embraer Phenom 300	Embraer	Light Jet	flight type G and N only
E75L	Embraer RJ175	Embraer	Bizliner	flight type G only
EA50	Eclipse 500	Eclipse	Light Jet	
F2TH	Dassault Falcon 2000	Dassault	Heavy Jet	
F900	Dassault Falcon 900	Dassault	Heavy Jet	
FA10	Dassault Falcon 10/100	Dassault	Light Jet	
FA20	Dassault Falcon 20/200	Dassault	Midsize Jet	
FA50	Dassault Falcon 50	Dassault	Midsize Jet	
FA7X	Dassault Falcon 7X	Dassault	Heavy Jet	
FA8X	Dassault Falcon 8X	Dassault	Heavy Jet	
G150	Gulfstream G150	Gulfstream	Midsize Jet	
G280	Gulfstream G280	Gulfstream	Midsize Jet	
GA5C	Gulfstream G500/550	Gulfstream	Heavy Jet	
GA6C	Gulfstream G600/650	Gulfstream	Heavy Jet	
GALX	Gulfstream G200	Gulfstream	Midsize Jet	
GL5T	Global 5000	Bombardier	Heavy Jet	
GL6T	Global 6000	Bombardier	Heavy Jet	
GLEX	Global Express / 6000	Bombardier	Heavy Jet	
GLF2	Gulfstream 2	Gulfstream	Heavy Jet	
GLF3	Gulfstream 3	Gulfstream	Heavy Jet	
GLF4	Gulfstream G300/450	Gulfstream	Heavy Jet	
GLF5	Gulfstream G500/550	Gulfstream	Heavy Jet	

GLF6	Gulfstream G600/650	Gulfstream	Heavy Jet	flight type G and N only
H25B	Hawker 700-900	Hawker Beechcraft	Midsize Jet	
H25C	British Aerospace 125-1000	British Aerospace	Light Jet	
HA4T	Hawker 4000	Hawker Beechcraft	Midsize Jet	
HDJT	HondaJet	Honda	Light Jet	
HF20	Hansa Jet	Hamburger Flugzeugbau	Light Jet	
LJ23	Learjet 23	Bombardier	Light Jet	
LJ24	Learjet 24	Bombardier	Light Jet	
LJ25	Learjet 25	Bombardier	Light Jet	
LJ28	Learjet 28	Bombardier	Light Jet	
LJ31	Learjet 31	Bombardier	Light Jet	
LJ35	Learjet 35	Bombardier	Light Jet	
LJ40	Learjet 40	Bombardier	Light Jet	
LJ45	Learjet 45	Bombardier	Light Jet	
LJ55	Learjet 55	Bombardier	Midsize Jet	
LJ60	Learjet 60	Bombardier	Midsize Jet	
LJ70	Learjet 70	Bombardier	Midsize Jet	
LJ75	Learjet 75	Bombardier	Midsize Jet	
P180	Piaggio P180 Avanti	Piaggio Aerospace	Turboprop	
PAY2	Piper Cheyenne 2	Piper Aircraft	Turboprop	
PAY3	Piper Cheyenne 3	Piper Aircraft	Turboprop	
PAY4	Piper Cheyenne 400	Piper Aircraft	Turboprop	
PC12	Pilatus PC-12	Pilatus	Turboprop	
PC24	Pilatus PC24	Pilatus	Light Jet	
PRM1	Premier 1	Hawker Beechcraft	Light Jet	
SBR1	Sabreliner	NA Rockwell	Light Jet	
SBR2	Sabreliner	NA Rockwell	Light Jet	
SJ30	Syberjet SJ30	SyberJet	Light Jet	
TBM7	Socata TBM 700	Daher-Socata	Turboprop	
TBM8	Socata TBM 850	Daher-Socata	Turboprop	
TBM9	Socata TBM 900 series	Daher-Socata	Turboprop	
WW23	1123 Westwind	IAI	Midsize Jet	
WW24	1124 Westwind	IAI	Midsize Jet	
EA50	Eclipse 500	Eclipse	Light Jet	

The list is permanently updated ...

DISCLAIMER

This report is provided by EBAA for information purposes only and no representation, warranties or other assurances, express or implied, are given as to the quality, accuracy, or completeness of the information contained in, or provided in connection with the report.

Recipients of this report must determine for themselves whether any matters referred to are suitable for their purposes. Neither EBAA nor any of their affiliates, agents, partners, representatives, consultants or any other company, firm or organisation involved in producing this report, nor any of their successors or assign or any employees, officer or director of any of them shall have any liability with respect to the use or reliance on the report by any person, irrespective of any negligence, omission or default, on the part of the foregoing persons.

Any reproduction or publication of this report, in whole or in part, is strictly forbidden without the written consent of EBAA. Please write to communications@ebaa.org for questions related to the use of this report.

For more information, please contact:

Square de Meeûs 37
BE - 1000 Brussels - Belgium

Phone: +32 2 318 28 00
Fax: +32 2 318 28 01

Follow us



@EUROPEANBUSINESSAVIATIONASSOCIATION



@EBAAORG



EUROPEAN BUSINESS AVIATION ASSOCIATION



@EUROPEAN_BUSINESS_AVIATION

www.ebaa.org

